

**Over-Allocation or Abatement?  
A Preliminary Analysis of the Eu Ets  
Based on the 2005 Emissions Data**

Denny Ellerman and Barbara Buchner

NOTA DI LAVORO 139.2006

**NOVEMBER 2006**

CCMP – Climate Change Modelling and Policy

Denny Ellerman, *Massachusetts Institute of Technology,*  
*Senior Lecturer at Sloan School of Management*  
Barbara Buchner, *Fondazione Eni Enrico Mattei*

This paper can be downloaded without charge at:

The Fondazione Eni Enrico Mattei Note di Lavoro Series Index:  
<http://www.feem.it/Feem/Pub/Publications/WPapers/default.htm>

Social Science Research Network Electronic Paper Collection:  
<http://ssrn.com/abstract=946091>

## **Over-Allocation or Abatement? A Preliminary Analysis of the Eu Ets Based on the 2005 Emissions Data**

### **Summary**

This paper provides an initial analysis of the EU ETS based on the installation-level data for verified emissions and allowance allocations in the first trading year. Those data, released on May 15, 2006, and subsequent updates revealed that CO<sub>2</sub> emissions were about 4% lower than the allocated allowances. The main objective of the paper is to shed light on the extent to which over-allocation and abatement have taken place in 2005. We propose a measure by which over-allocation can be judged and provide estimates of abatement based on emissions data and indicators of economic activity as well as trends in energy and carbon intensity. Finally, we discuss the insights and implications that emerge from this tentative assessment.

**Keywords:** Climate Change, Emission Trading, Allocation, Environmental Effects

**JEL Classification:** D61, O1, Q51, Q54

*We are greatly indebted to continuing discussions with a number of observers and analysts of the EU ETS and to comments received in response to a presentation of this paper to the WIFO-MIT Global Change Forum held in Vienna in October 2006. Our greatest debt is to Angela Köppl from the Austrian Institute of Economic Research (WIFO) in Vienna and Stefan Schleicher from the Wegener Center for Climate and Global Change at the University of Graz whose initial compilation of the Community Independent Transaction Log (CITL) data, subsequently updated by us, made this evaluation possible. The usual disclaimer applies to the responsibility of all who have helped us for the interpretations of the data that we present here.*

*Address for correspondence:*

Barbara Buchner  
Fondazione Eni Enrico Mattei  
c/o Palazzo Querini Stampalia  
Campo S. Maria Formosa Castello 5252  
30122 Venezia  
Italy  
Phone: +39 041 2711470  
Fax: +39 041 2711461  
E-mail: [barbara.buchner@feem.it](mailto:barbara.buchner@feem.it)

## I. INTRODUCTION

On May 15, 2006, the European Commission officially released installation-level data for verified emissions and allowance allocations for 2005, the first of the three years of the trial period for the European Union's CO<sub>2</sub> Emissions Trading Scheme (EU ETS). Those data and subsequent updates revealed that CO<sub>2</sub> emissions were about 80 million tonnes or 4% lower than the number of allowances distributed to installations for 2005 emissions. This long position has been interpreted as evidence of over-allocation, something that had been suspected but which seemed belied by the higher than expected prices that had prevailed before the release of these data. While over-allocation cannot be dismissed as a possibility, a long position is not *per se* evidence of over-allocation. Installations that had abated in order to sell allowances or to bank them for use in later years would appear in these data as long. In fact, it would be impossible based on a simple comparison of allocations and emissions at the installation level to determine whether a long position indicated over-allocation or abatement. Hence, the question posed by the title of this paper.

The rest of the paper is organized in four sections. The first presents and comments on the 2005 data as well as the price movements associated with the release of these data. Although a full discussion of European Union Allowance (EUA) pricing is beyond the scope of this paper, an understanding of what EUA prices did—and perhaps more importantly what they did not do—bears on any discussion of over-allocation and abatement. The next section addresses over-allocation and proposes a measure by which over-allocation can be judged. Then, we turn to abatement and provide some estimates of abatement based on the 2005 emissions data and economy-level indicators of economic activity and trends in energy and carbon intensity. The last section concludes.

## II. THE 2005 DATA AND EUA PRICES

Table 1 provides the 2005 installation-level data aggregated by member states ordered by the size of the 2005 allocation. The last two columns indicate the extent to which the installations in each member state are as a whole either long or short both in absolute and percentage terms.

Table 1. A general picture of the EU ETS in its first year

|                       | Allocation 2005<br>Mt CO <sub>2</sub> | Emissions 2005<br>Mt CO <sub>2</sub> | Difference<br>Mt CO <sub>2</sub> | Difference<br>Percentage |
|-----------------------|---------------------------------------|--------------------------------------|----------------------------------|--------------------------|
| <b>TOTAL</b>          | <b>2,087.9</b>                        | <b>2,006.6</b>                       | <b>81.3</b>                      | <b>3.9%</b>              |
| <b>Germany</b>        | 495.0                                 | 474.0                                | 20.9                             | 4.2%                     |
| <b>Poland</b>         | 235.6                                 | 205.4                                | 30.1                             | 12.8%                    |
| <b>Italy</b>          | 215.8                                 | 225.3                                | -9.5                             | -4.4%                    |
| <b>UK</b>             | 206.0                                 | 242.5                                | -36.4                            | -17.7%                   |
| <b>Spain</b>          | 172.1                                 | 182.9                                | -10.8                            | -6.3%                    |
| <b>France</b>         | 150.4                                 | 131.3                                | 19.1                             | 12.7%                    |
| <b>Czech Republic</b> | 96.9                                  | 82.5                                 | 14.5                             | 14.9%                    |
| <b>Netherlands</b>    | 86.5                                  | 80.4                                 | 6.1                              | 7.1%                     |
| <b>Greece</b>         | 71.1                                  | 71.3                                 | -0.1                             | -0.2%                    |
| <b>Belgium</b>        | 58.3                                  | 55.4                                 | 3.0                              | 5.1%                     |
| <b>Finland</b>        | 44.7                                  | 33.1                                 | 11.6                             | 25.9%                    |
| <b>Denmark</b>        | 37.3                                  | 26.5                                 | 10.8                             | 29.0%                    |
| <b>Portugal</b>       | 36.9                                  | 36.4                                 | 0.5                              | 1.3%                     |
| <b>Austria</b>        | 32.4                                  | 33.4                                 | -1.0                             | -3.0%                    |
| <b>Slovakia</b>       | 30.5                                  | 25.2                                 | 5.2                              | 17.2%                    |
| <b>Hungary</b>        | 30.2                                  | 26.0                                 | 4.2                              | 13.9%                    |
| <b>Sweden</b>         | 22.3                                  | 19.3                                 | 3.0                              | 13.3%                    |
| <b>Ireland</b>        | 19.2                                  | 22.4                                 | -3.2                             | -16.4%                   |
| <b>Estonia</b>        | 16.7                                  | 12.6                                 | 4.1                              | 24.6%                    |
| <b>Lithuania</b>      | 13.5                                  | 6.6                                  | 6.9                              | 51.1%                    |
| <b>Slovenia</b>       | 9.1                                   | 8.7                                  | 0.4                              | 4.6%                     |
| <b>Latvia</b>         | 4.1                                   | 2.9                                  | 1.2                              | 29.9%                    |
| <b>Luxembourg</b>     | 3.2                                   | 2.6                                  | 0.6                              | 19.4%                    |

Source: Own calculations based on data provided by the CITL.

A number of comments need to be made concerning these data. First, they are not complete. A number of installations in some countries have yet to report and the entries for some installations have changed since first reported in May 2006. The figures presented here are updated through 31 October 2006, as of which date information on 10,046 installations in 23 member states had been made available on the CITL.<sup>2</sup> These installations account for 88% of the installations and 96% of the EUAs allocated directly to installations. The remaining installations are small and their emissions are not likely to change the over-all length of EU ETS in 2005 significantly.<sup>3</sup>

<sup>2</sup> Data for Cyprus and Malta, which account for 0.3% of EU allowances and emissions, had not been reported to the CITL when this paper was being prepared. Subsequent references to EU23 refer to data without Cyprus and Malta.

<sup>3</sup> The main uncertainty involves Poland. In July 2006, the Commission released data for 459 installations (out of 1088) in Poland that received 90% of Poland's annual allocation, which indicated a surplus equal to 12.8% of the allowances allocated to those installations. The figures reported in Table 1 for Poland

Second, the allowance totals for member states reflect the allowances distributed to installations in 2005 and not the annual average of all allowances that will be distributed during 2005-07. European Union Allowances (EUAs) reserved for new entrants, auctions, or early action awards are not included and in many cases these reserves have not yet been released. Also, the allowances received by installations in the first year are not necessarily one third of the total to be distributed to installations in the first trading period. Denmark, for instance, made annual distributions in the three years of 40%, 30%, and 30%.

Third, and finally, these data do not indicate the amount of purchases and sales made by specific facilities, although they do have implications for trading patterns. All that is indicated is the difference between the 2005 allocation and 2005 verified emissions. Installations that are shown to be short, that is, with 2005 emissions greater than the 2005 EUA allocation, can be presumed to have purchased or otherwise acquired EUAs from other installations (or from their own 2006 endowments) to be in compliance. Conversely, installations that are revealed to be long would have EUAs for sale, but that doesn't mean that they were made available to the market or transferred to another facility having common ownership, although obviously many had been sold or transferred in order for the installations that were short to be in compliance.

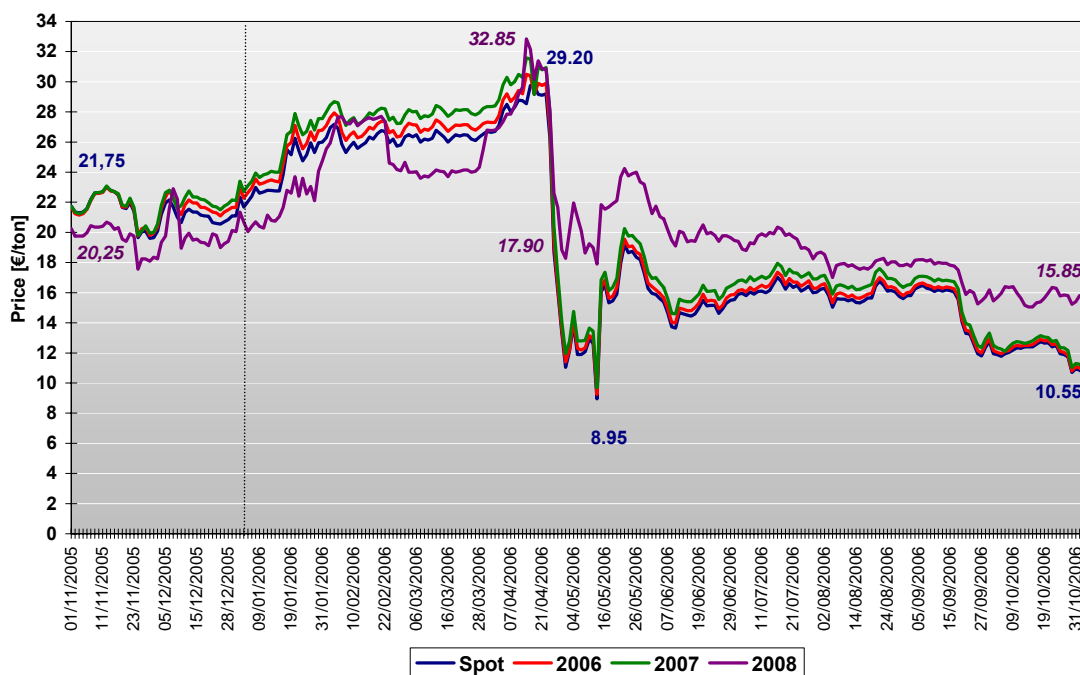
The release of the emissions data had a marked effect on EUA prices, as shown by the sharp break in the price of all maturities of EUAs that can be observed in late April 2006 depicted on Figure 1. Following announcements by the Netherlands and the Czech Republic on Tuesday, April 25 that their emissions were 7% and 15% below the respective allocations to installations, EUA prices fell by about 10%. Subsequent announcements from the Walloon region of Belgium, France, and Spain revealing similarly long positions for the first two and a smaller than expected shortage in Spain led to a closing spot price on Friday April 28 of €13.35, 54% below the closing spot price

---

extrapolate this percent surplus to the total allocation to Polish installations. However, as of Oct 31, 2006, the CITL data show 481 installations with data for both allowances and emissions that constitute 60% of total allowances and which indicate a surplus of 19%. Extrapolating this percentage to the whole would add another 14 million tonnes to Poland's and the EU surplus. This would increase the EU surplus in Table 1 from 3.9% to 4.6%. Like most analysts and until a more complete accounting is available, we rely on the Commission's more comprehensive totals where an aggregate number is required, such as in Table 1, and on the CITL when installation data are needed in our analysis.

on Monday, April 24, of €29.20. There were further, less severe fluctuations of price until the complete data were released on May 15; however, the essential adjustment was made in these four days and after May 15 the spot price remained close to €15 until late September when a further less pronounced adjustment occurred.

*Figure 1. Price developments on the EU carbon market (OTC Market, November 2005 to October 2006)*



Source: Own calculations based on data from Point Carbon.

This price “collapse” demonstrated a readily observable characteristic of markets of reacting quickly (and from the standpoint of some, brutally) to relevant information. And there should be no doubt that the release of reliable information concerning emissions covered by a cap-and-trade program is highly relevant. The cap is always known, but until aggregate emission data is released no one has a really good idea of what aggregate emissions are, much less of how much emission reduction or abatement is required to comply with the cap. The same phenomenon was observed in the US SO<sub>2</sub> emissions trading program when the first auction revealed emissions and the implied demand for allowances to be much less than expected (Ellerman et al., 2000). In the case of the EU

ETS, a similar adjustment of expectations concerning CO<sub>2</sub> emissions and the implied demand for EUAs occurred in response to the release of these data. Anyone doubting the adjustment in expectations need only refer to the headline of the guest editorial in Point Carbon's April 21 edition of *Carbon Market Europe*— "CO<sub>2</sub> price still too low"—and note the absence of such articles since the end of April. While the obvious explanation of the price break in late April is an adjustment of expectations, EUA prices did not go to zero and they have remained, even after the most recent adjustment, at a level that approximates the high end of the initially predicted price range.

### **III. Do the 2005 Data Reveal Over-allocation?**

#### ***A. A Working Definition of Over-allocation***

Over-allocation is not a well defined concept. The choice of words implies that too many allowances were created, but the standard by which "too many" is to be determined is rarely stated. Moreover, over-allocation tends to be conflated with being long, that is, having more allowances than emissions. Since any market presumes buyers and sellers and in an allowance trading system the former will be short and the latter long, it cannot be the case that everyone is short. Making sense of over-allocation requires both a standard of reference and some understanding of the reasons that some installations are short and others long.

Two standards of reference can be imagined. The first is what emissions would have been without the trading system, what can be called the counterfactual, and is termed BAU (for Business as Usual) emissions in modeling exercises. Probably all would agree that handing out more allowances than BAU emissions would constitute over-allocation. And if such were true, there would of course be no constraint and no market unless participants were poorly informed about the relationship between the cap and the counterfactual. A second standard of reference could be a cap that is constraining, that is, less than the counterfactual, but still judged not sufficiently ambitious. For instance, if the desired degree of ambition were a 5% reduction of emissions from the counterfactual, and allowances were distributed such as to require only a 2% reduction, the 3% difference might be considered over-allocation. While this second definition is plausible

and seemingly the one intended in much of the current debate, we argue that it would be better to reserve the term “over-allocation” for the first definition to which all can agree.

Installations, or any aggregation of installations, such as a sector, member state, or even the system as a whole, can be long or short for a number of reasons other than “over-allocation.” One of the most obvious is the very incentive that motivates trading, differences in the marginal cost of abatement. For any given allocation that is equitable and constraining, those installations with lower cost of abatement would be expected to reduce emissions in order to free up allowances to sell to installations that face higher costs of abatement. Such desired behavior would show up in reported installation data, as that released in May 2006, as data points that are both long and short according to the marginal cost of abatement at the covered installations.

A second reason for the appearance of a long position is uncertainty, the fact that the future is rarely what is expected. Supposing again an initial equitable and constraining allocation, it is inevitable that some installations will produce more than expected and others less. The consequences in an emissions trading system are that the former will be short and the latter long. It ought not to be argued that the installations that are long because they produced less than expected, and therefore had lower emissions, were over-allocated, unless one is prepared to argue that short installations were “under-allocated.” Given uncertainty, the only way to overcome such over- and under-allocation would be to adjust allowances ex post, which would remove at least some of the incentive to abate.

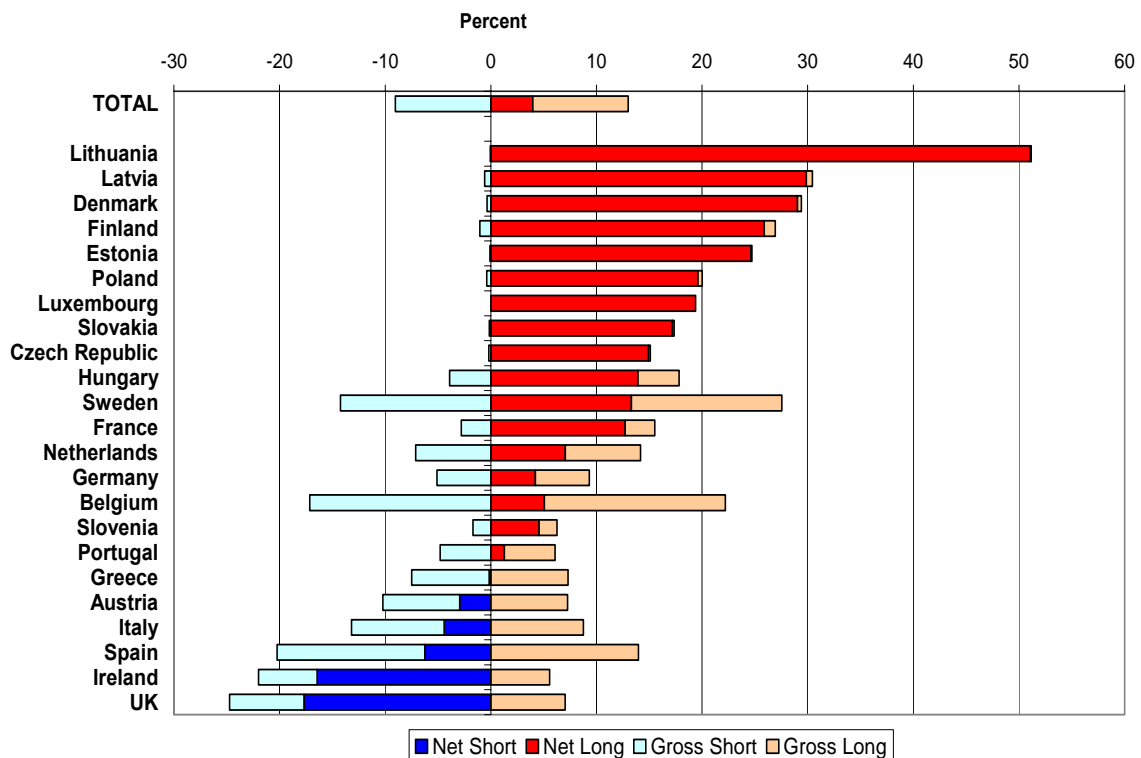
The effects of uncertainty are not limited to the components of an aggregate. To the extent that economic activity, weather or any other factor affecting emissions deviates from what is expected, counterfactual emissions will be higher or lower than expected and any given cap will be more or less constraining with consequent effects on the positions of all the components. Since stochastic disturbances will tend to have a greater effect at the installation level, short and long positions will still occur but the proportions will change.



## B. Presentation of the 2005 Data

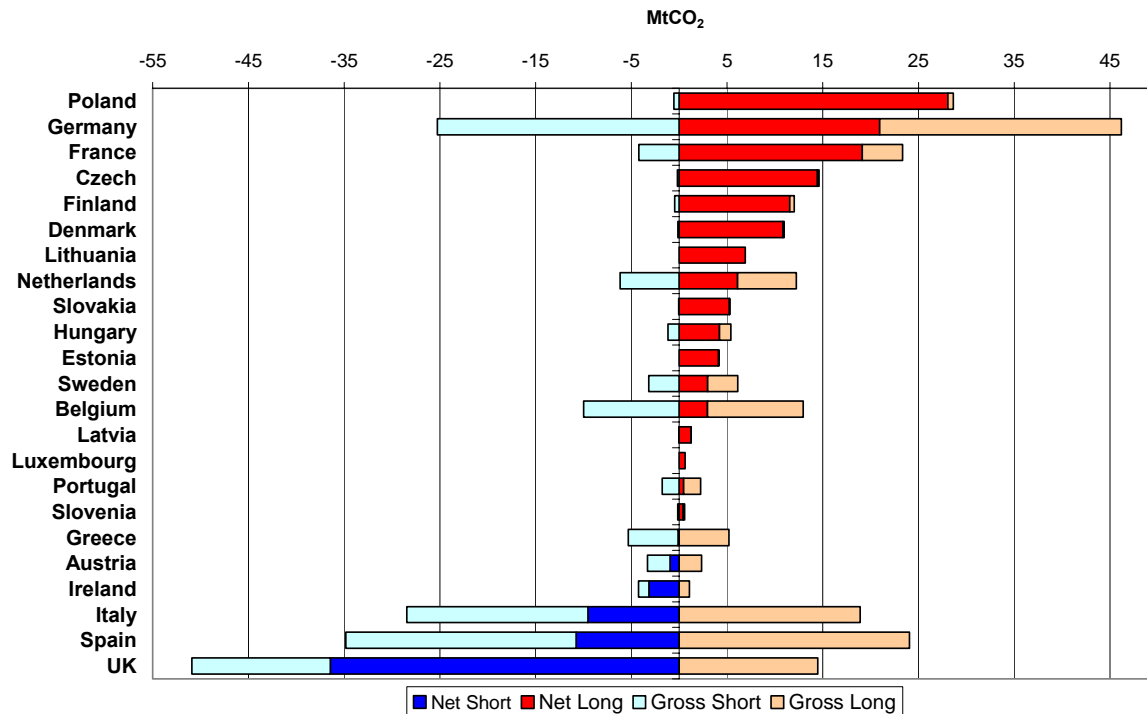
With these considerations in mind, it is useful to look at the data for the sums of differences between emissions and allocations at the installation level for various aggregates. Figures 2 and 3 do this for the EU as a whole and for the constituent member states both in absolute and relative terms. In both of these figures, the data are portrayed as the sum of the differences for all the installations having long and short positions, respectively as “gross long” and “gross short.” Each aggregate then has either a “net long” or a “net short” position indicated by the bold color and equal to the difference between the “gross long” and “gross short” data points for that aggregate.

Figure 2. Short and long positions by member state in percent



Source: CITL and Kettner *et al.* (2006).

Figure 3. Short and long positions by member state in MtCO<sub>2</sub>



Source: CITL and Kettner *et al.* (2006).

Figure 2, where the differences are expressed as percentages of the total allocation to installations constituting the aggregate, is the more instructive display of the information for the purposes of developing some measure of over-allocation. Lithuania can serve as an example of evident over-allocation. Only three installations were short and the difference between total emissions and total allowances allocated to installations was slightly over 50% of 2005 emissions. While over-allocation seems evident, figuring out how much would be difficult since it is quite possible that the levels of economic activity in Lithuania were not what was expected, that Lithuanian installations may have abated, or that some other factor may explain some or all of the long position.

At the other extreme is the UK where installations were both long and short, but the extent to which installations were short was much greater than the corresponding figure for installations that were long such that emissions were 18% greater than the allocation. Clearly, the UK as a whole cannot be considered to have been over-allocated even if

some firms and sectors may be long. Also, the short position may be created, not so much by intention, but by higher levels of economic activity than expected or other unexpected events, such as high natural gas prices, created a larger number of short positions. Still, these two cases illustrate the point that subject to the qualifications we have noted, it would be as hard to argue that the UK was “over-allocated” as it would be to argue that Lithuania was not.

Having set up two polar cases, Figure 2 illustrates the great diversity among the EU member states. As indicated by the top bar, the situation of the EU as a whole is balanced, but the member states fall roughly into four categories. The first includes those like Lithuania where all or nearly all the installations are long and by a considerable amount. This group comprises the first nine member states from the top in Figure 2. In addition to having no or few installations that were short, the long position is in excess of 15% of the total allocation. The next three member states, Hungary, Sweden and France, constitute a second group that are similar in having significant long positions, between 10% and 15% of the allowance allocation, but with more short installations, especially in Sweden. The third group consists of the next five member states—Holland, Germany, Belgium, Slovenia, and Portugal—that are long on balance but by relatively modest amounts that would fall well within what might be expected as a result of a relative advantage in abatement or less favorable economic, meteorological, or other circumstances in 2005. The final group is of course the six member states who were on balance short: Greece, Austria, Italy, Ireland, Spain, and the UK.

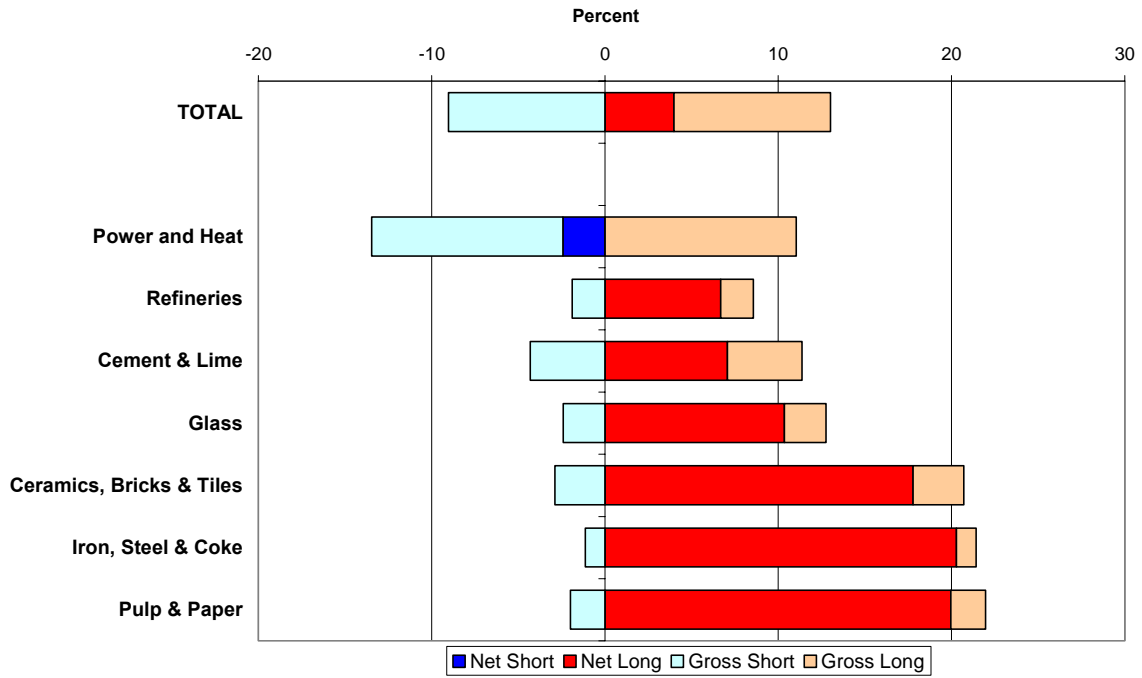
While Figure 2 is the more helpful of these two diagrams for evaluating the presence of over-allocation, Figure 3 is necessary to put the phenomenon in perspective and it provides a good picture of the main sources of demand and potential supply of EUAs in the market in 2005. The gross shorts, totaling 180 MtCO<sub>2</sub>, are located mostly (80%) in four countries: the UK, Spain, Italy, and Germany. The same four countries, plus France and Poland, constitute the largest part of the potential sellers’ side of the market with approximately 150 of the 250 MtCO<sub>2</sub> allocated to installations that were not needed to cover their emissions in 2005, or about 60% of the total. Many of the trades were undoubtedly within the same countries, but there were also net transfers of EUAs among member states and borrowing from the 2006 allocation. An analysis conducted by the

Italian registry of the trading patterns of Italian companies and the origin of surrendered permits revealed that 7.8 million of the 43.3 million EUAs by which Italian installations were short were covered by borrowing and that 7.0 million of surrendered EUAs were initially issued to installations outside of Italy (*Point Carbon News*, Oct. 30, 2006). Thus, 66% of the gross short position of Italy was covered by redistribution of EUAs among installations in Italy, 18% by borrowing from the installations' forward allocation, and 16% by purchases outside of Italy.

The net positions displayed in Figures 2 and 3 imply transfers of allowances among member states although internal borrowing would also be a possibility. The net balances imply that 60% of the demand for international trading came from the UK with another 18% from Spain, 16% from Italy and the remaining 6% from Ireland, Austria, and Greece. The potential suppliers were more evenly distributed with Germany, Poland, and France accounting for about half of the total. The analysis by the Italian registry indicates that 74% of Italy's net short position of 9.5 million EUAs was covered by purchases from abroad and the remainder by within-country borrowing. The remaining 5.4 million tonnes of borrowed EUAs substituted for purchases or transfers from other installations within Italy.

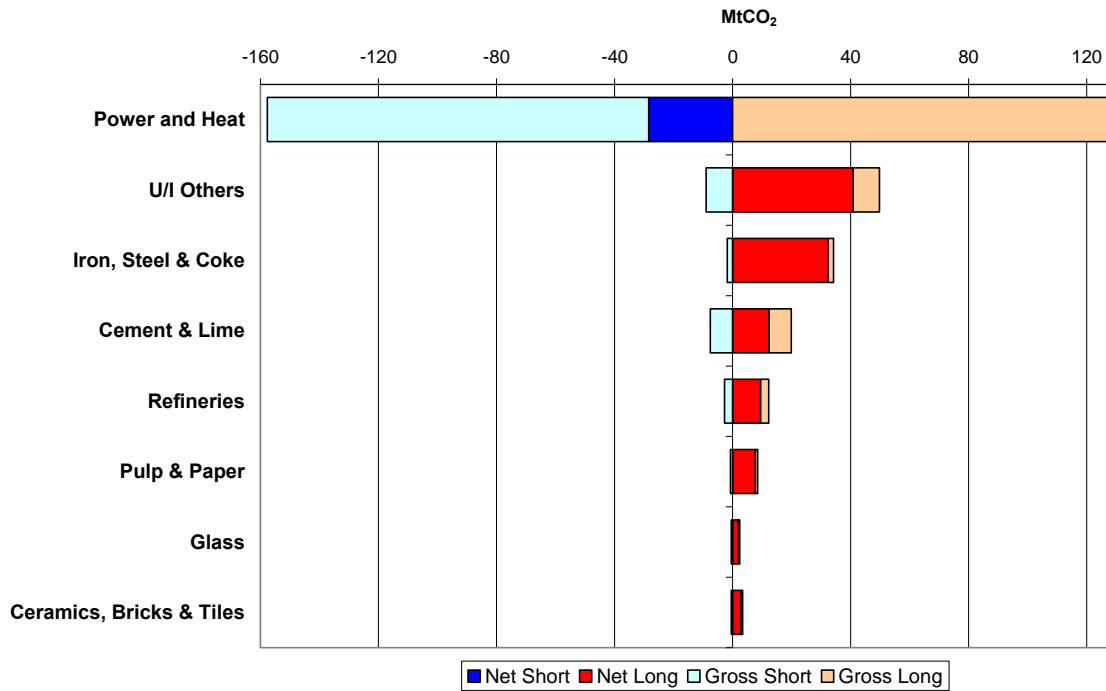
Member states are not the only aggregates into which the installation data can be aggregated. Another break-out is by economic sector, as is done in Figures 4 and 5. By this grouping, the power sector is in the aggregate modestly short (by about 3%), while all the other sectors are long by more significant percentages. Among these industrial sectors, three—ceramics, bricks and tile; iron, steel and coke; and pulp and paper—are long by more than 15% of the allocation to these sectors. When placed in the perspective of the volume of emissions, as in Figure 5, the power sector dominates the potential market. Virtually all of the compliance demand for EUAs in 2005 came from the power sector, as well as about half of the total potential supply.

Figure 4. Short and long positions by EU-wide sectors



Source: CITL and Kettner *et al.* (2006).

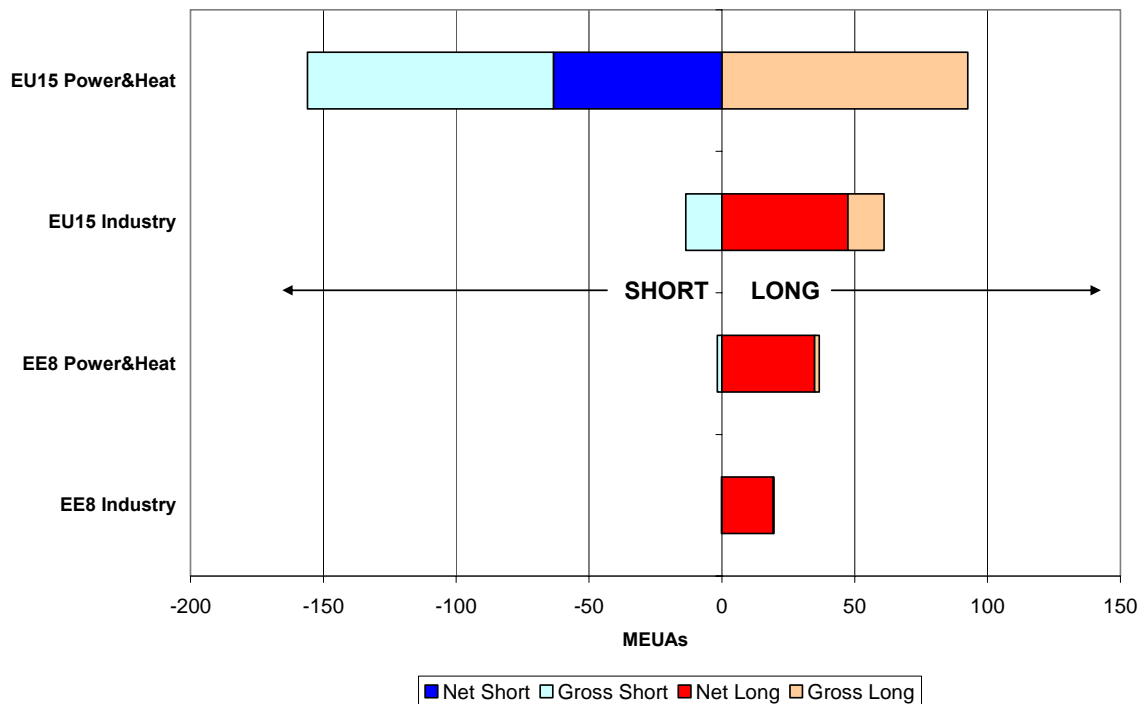
Figure 5. Short and long positions by EU-wide sectors in absolute terms



Source: CITL and Kettner *et al.* (2006).

When sector and regional classifications are combined, an even clearer picture of the implied redistribution of allowances is obtained. In Figure 6, the sectors are grouped into power and heat and all others (generically industry) and aggregated into regions defined as the EU 15 and the 8 East European accession states. The power and heat sector in the EU15 is the only player in the EU ETS that has been characterized by an overall net short position. More than half of the net length is located in Eastern Europe, although given the registry problems in Eastern Europe, most of the net short position of the EU15 power and heat sector was probably covered by purchases from the EU15 industrial sectors.

Figure 6. A breakdown of short and long positions by major sectors and regions



### C. A Measure of Over-allocation

A measure of the likelihood of over-allocation can be calculated from this data based on the earlier discussion of what might cause long positions. Any aggregate of

installation data will typically show the group to be either long or net on balance and to have some component long and others short. For each, a ratio can be calculated from the net position in relation to the corresponding long or short position, such as indicated below.

$$\text{Net Ratio} = \frac{\text{Net Long or Short}}{\text{Gross Long or Short}}$$

To take our earlier examples, Lithuania would have a ratio of +1.0 since it was long and its net long position is identical to its gross long position. Conversely, the UK has a ratio of -0.72 since its net short position is 72% of the sum of the amounts by which all short installations were short. By definition, the net ratio is limited to values between -1.0 and +1.0 with negative numbers indicated that the aggregate or member state is short over-all and positive values indicating the opposite.

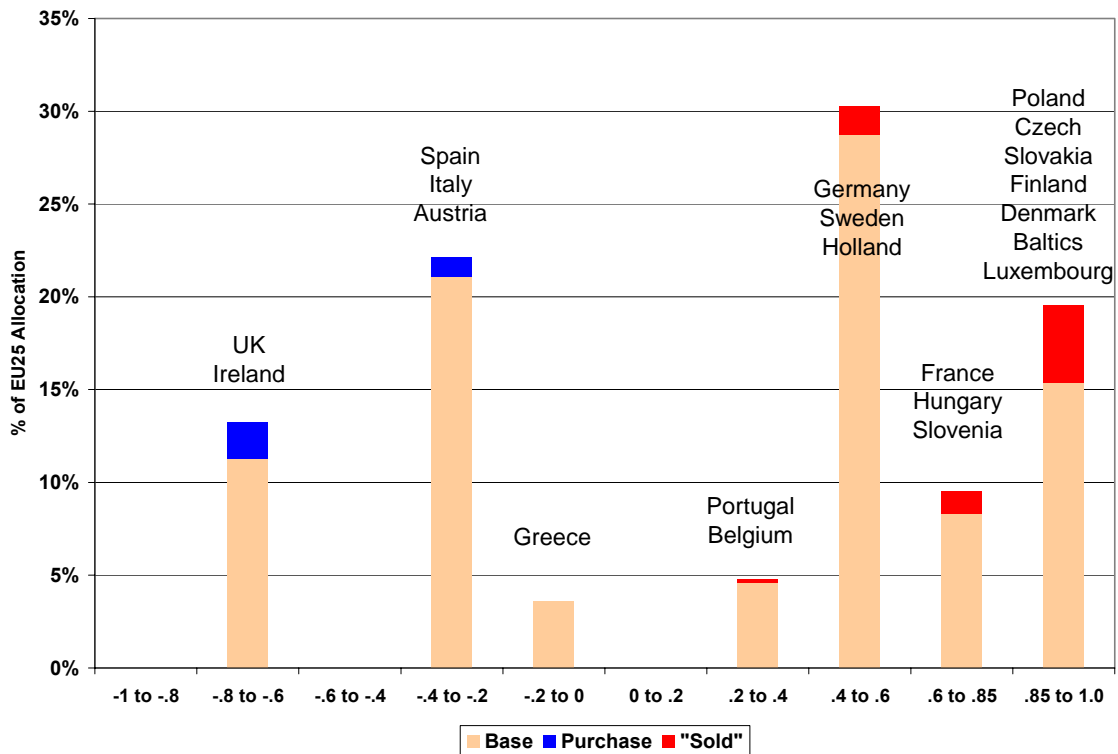
A negative net ratio suggests that no obvious over-allocation has taken place. Sectors within a member state may be over-allocated, but if the member state as a whole is not, the over-allocation is compensated by an implied under-allocation to other sectors. While such differentiation can create problems for sectors that compete across national boundaries, this differentiation can be regarded as an internal matter not significantly different from other forms of assistance or regulatory treatment that may advantage or disadvantage a sector relative to competitors in other countries.

Member states that have positive ratios would need to be divided into two groups depending on where the line is drawn for indicating over-allocation. The first sub-group would be those with a high positive ratio indicated few installations that were short. This leaves a second group with a net ratio that is positive but not excessive. There is no a priori answer concerning where to draw the line between these two groups, but the data clusters in a manner that allows some to be clearly assigned to one group or the other.

Figure 7 represents the distribution of allowances by member states expressed as a percentage of the EU25 allocation according to their net ratios. The part of the columns labeled “base” represents emissions that were covered by allocated allowances. The blue parts of the columns labeled “purchase” indicate emissions that were greater than the allocation for those member states with a net ratio from -1.0 to zero. The red parts of the

columns labeled “for sale” indicate allocated allowances in excess of emissions for those countries with a net ratio between 0 and +1.

Figure 7. Distribution of EUAs by Net Ratio



The UK and Ireland, representing about 12 % of the overall EU25 allocation, are the two countries characterized by the shortest positions and a net short that is approximately 2% of all the EUAs issued by the EU25. The next four countries – Spain, Italy, Austria, and Greece – account for about 25% of total EUAs and they are all short but less so than the UK and Ireland. On the side of the longs, Belgium and Portugal, have relatively balanced positions not unlike the previous four on the short side of the ledger. Germany’s size will cause the category in which it falls to dominate all the others and so it is for the group with net ratios between +0.4 and +0.6, which constitutes almost one third of the total allocation. The next two groups, with net ratios higher than +0.6 include the member states for which the evidence of over-allocation is much stronger. They constitute about 29% of the EU25 total and their combined surplus is about 5%.



Where to place the threshold for what might be considered a presumption of over-allocation is obviously a difficult decision. It should be drawn at a relatively high net positive ratio for the reasons explained earlier and even then other factors should be considered before coming to a definitive conclusion. The important point is not that there were some member states for which over-allocation is indicated, but that there were so many for which that was not the case. Even with a relatively low presumptive threshold for over-allocation of +0.60, eleven member states that distributed 71% of all EUAs cannot be viewed as involving over-allocation. And for the 29% remaining, about 24% of the allowances were required to cover emissions in 2005 so that the net potential over-allocation is on the order of 5% or 100 million EUAs, assuming that none of the length can be attributed to abatement or unexpected conditions that create length in 2005 but could not be expected to do so in the future.

Whatever the correct magnitude of this estimate, it needs to be placed in context. First, it is not necessarily a complete indicator of the over-all length of the EU ETS at this point in time since the allowances reported are those distributed to installations in 2005. It does not include many of the allowances in reserves for new entrants, auctions, or other purposes that had not been distributed by the end of 2005. While these reserves are not specifically reserved for any single year, most of them will become available before the end of 2007. If the three-year total for all EUAs is divided by three, another 85 million EUAs are indicated as 2005 allowances not yet distributed. A second observation concerns the greater over-allocation that was avoided by the cuts that the Commission required from a number of first period NAPs. These totaled 290 million EUAs, approximately equal on an annual average to the potential over-allocation indicated by an analysis of the 2005 data. Finally, over-allocation indicates very little about abatement or the reduction of emissions that is the fundamental object of the EU ETS. We now turn to this second part of the question that we pose in the title to this paper.

## IV. HAS THE EU ETS REDUCED CO<sub>2</sub> EMISSIONS?

### A. *Some Initial Considerations*

Just as being long or short is a difference between emissions and allocation, so abatement is a difference between emissions and the counterfactual, or what CO<sub>2</sub> emissions would have been in the absence of the EU ETS. And, while the first difference can be readily deduced from two observable data points, the second difference can never be determined with certainty because the counterfactual is not observed and never will be. It can only be estimated, but there are better and worse estimates and much can be done to narrow the range of uncertainty, particularly when the evaluation is done *ex post* when the levels of economic activity, weather, energy prices and other factors affecting the demand for allowances are known.

In the case of the EU ETS, forming a good estimate of the counterfactual is complicated by the lack of historical data corresponding to the installations included in the scheme. Reasonably good data exist for the CO<sub>2</sub> emissions of the EU member states, however the EU ETS includes only a part—ranging from 30% to 70%—of each member state's emissions. And, prior to the start of the EU ETS, there was no reason to collect or to publish data on sectors or installations that were to constitute the EU ETS. One not entirely satisfactory source for of the data for these installations is that collected to establish an historical “baseline.” All the member states collected recent emissions data in the process of developing the first set of National Allocation Plans during 2004 in order to establish an initial point for projecting what emissions were expected to be in 2005-07 for the trading sector as a whole and for specific industrial sectors and for allocating allowances to the installations included in the scheme. While this data source provides a much needed reference point, it suffers from two problems: potential bias and imperfect comparability.

The potential bias in the data arises from the process by which the data were collected. As described in Ellerman, Buchner and Carraro (forthcoming), the data collection effort was largely a voluntary submission by the industries involved and it was conducted under severe time pressures that did not allow for as much verification as could be desired. Cooperation in submitting the data is reported as good, perhaps not surprisingly since

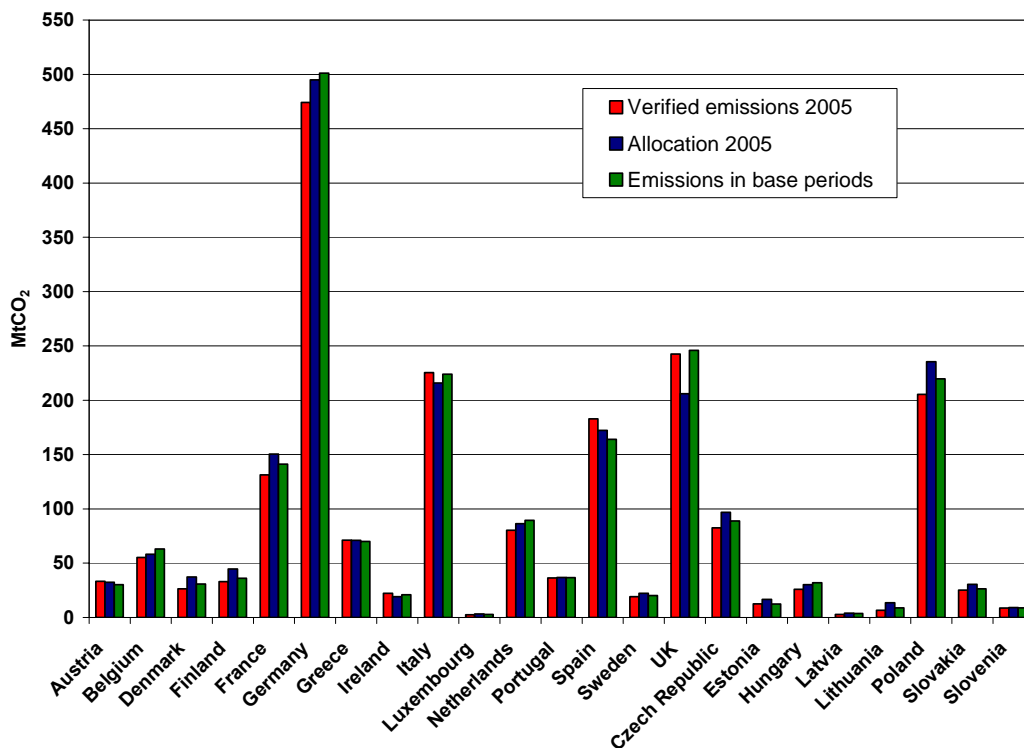
allowance allocations would depend on the data submitted; but for that reason there was also an incentive to resolve uncertainties in favor of higher emissions. While this incentive clearly existed, its role should not be exaggerated. The government officials cross-checked the data submitted with other information that was often available, as well as checking it for internal consistency. Also, a certain degree of internal discipline could be expected within the process from firms who would not be indifferent to inflated claims by competitors. The important point is not that these data should be accepted as is, or rejected out-of-hand, but that the extent of bias be measured or at least taken into account. It would be wonderful if there were other more reliable data that could be used, but in its absence, the baseline data is all that exists to enable an estimate of the extent to which the EU ETS met its primary objective of reducing CO<sub>2</sub> emissions.

The second problem with the baseline data is that the components to be summed across the EU are not fully comparable. Although all member states sought a measure of recent emissions in developing their baselines, the definitions varied. For all, it was an average of recent years ending with 2003, the last year for which data was available, but the years included in the average varied from two to six. Moreover, special provisions were sometimes adopted that let minimum observations be dropped, as in the UK, or for more recent 2004 data to be used instead of the historical average, as in the Czech Republic. Nevertheless, there are presently no other data and the historical baseline data have the merit of reflecting relatively recent years (e.g. around 2001-2003) for the installations in the EU ETS. As with the problem of bias, the solution is not to throw out the baseline data but to understand and to measure the errors that may be created by incomplete comparability.

## B. Verified Emissions Compared to Baseline Emissions

With these significant qualifications in mind, we now present the historical baseline data in comparison with corresponding data on allowances and verified emissions. Historical emissions must not be thought of as the counterfactual for 2005; it is the starting point before taking account of changes that would have occurred between the historical reference point and the year of the counterfactual, as we will do in the next section. Figure 8 provides the comparison on a country-specific basis. In each cluster, the historical baseline is the right-hand column, the 2005 allocation, the center column; and verified emissions, the left hand column.

Figure 8. Comparison of 2005 emissions with base period emissions



Source: Own calculations based on data from the CITL, the EC, and DEHSt (2005).

There are six different combinations in which verified emissions, allowances, and baseline emissions can be combined as shown in the table below.

Table 2. Allowances, emissions, and baseline relations

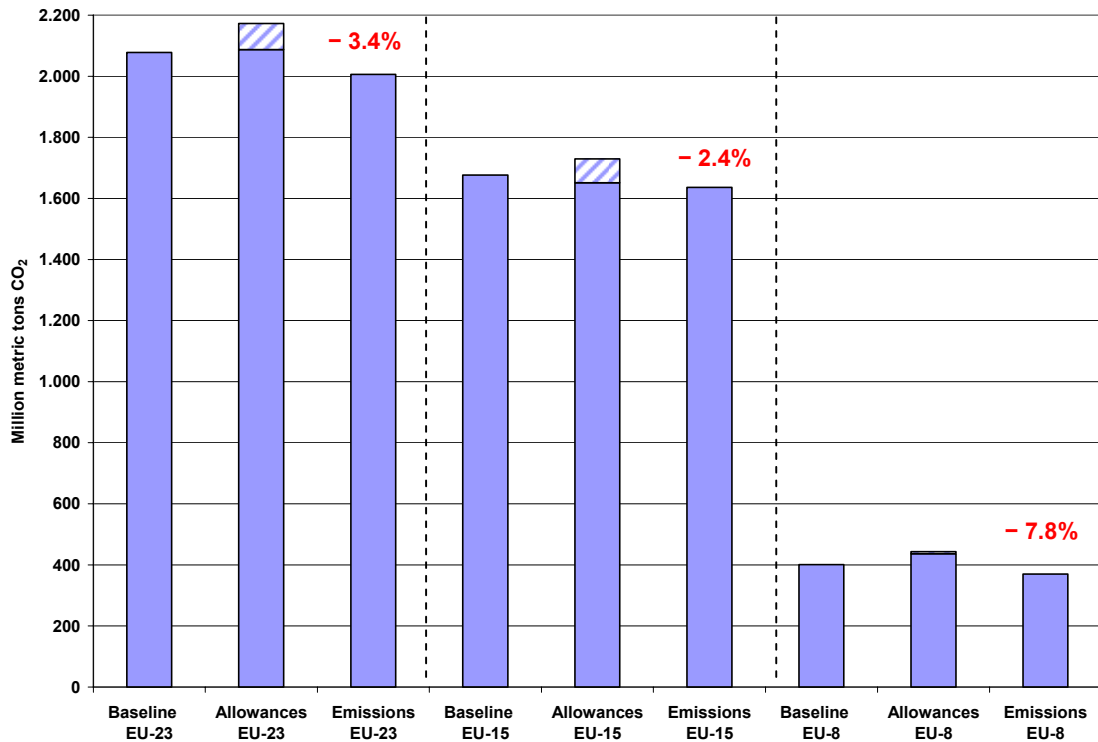
| Combination                          | Countries                                    | % of Allocation | Combination                          | Countries   | % of Allocation |
|--------------------------------------|--|-----------------|--------------------------------------|---|-----------------|
| <b>Allowances less than Baseline</b> |  |                 | <b>Allowances more than Baseline</b> |   |                 |
| <b>E &lt; A &lt; B</b>               | Belgium<br>Germany<br>Netherlands<br>Hungary | 32%             | <b>E &lt; B &lt; A</b>               | Denmark<br>Finland<br>France<br>Luxemburg<br>Portugal<br>Sweden<br>Czech Rep<br>Latvia<br>Lithuania<br>Poland<br>Slovakia<br>Slovenia | 33%             |
| <b>A &lt; E &lt; B</b>               | UK   | 10%             | <b>B &lt; E &lt; A</b>               | Estonia   | 1%              |
| <b>A &lt; B &lt; E</b>               | Italy<br>Ireland                             | 11%             | <b>B &lt; A &lt; E</b>               | Austria<br>Greece<br>Spain  | 13%             |

Source: Derived by authors from CITL data.

Member states can be divided into two groups: those will allowance totals less than baseline emissions (7 member states with 53% of allowances) and those with the opposite relation (16 member states with 47% of allowances). The former would be countries who expect emissions to decline from baseline levels, such as the UK, or that have challenging Kyoto targets through the European Burden Sharing Agreement (BSA) for which they are preparing, such as Italy and Ireland. The latter group typically includes those who do not appear likely to have difficulty in meeting their Kyoto obligation and for which emissions are expected to grow from historical baseline levels, such as the countries in Eastern Europe. The majority of EU15 member states also fall into this category, even some who face significant problems meeting their Kyoto obligations. Whatever the relation between the allowance total and baseline emissions, verified emissions may be lower than allowances and baseline emissions (16 countries with 65% of allowances) and which are all long in the 2005 data, higher than both (5 countries with 24% of allowances) and which are all short, or between the two (2 countries with 11% of allowances).

Figure 9 presents these country-specific data points summed into a whole for the EU23 and for the regional distinction between the EU15 and the 8 East European accession states (subsequently EE8).

*Figure 9. 2005 emissions, base period emissions and total allowances: a regional breakup*



Source: Own calculations based on data from the CITL, the EC, and DEHSt (2005).

For the EU23, verified emissions are 3.4% less than baseline emissions and the corresponding percentages for the EU15 and the EE8 are -2.4% and -7.8%. In these three aggregated comparisons, the middle column representing allowances indicates the allowances distributed directly to installations by the solid color. The hatched area at the top of each column indicates the difference between the number of allowances distributed to installations in 2005 and one-third of the cumulative three-year total for each member state. These are allowances that have been reserved for auctions, new entrant or early action reserves, or other special provisions. Most of these reserved allowances were not distributed in 2005, but most of them will be issued before the end of 2007. It is to be noted that when the reserves are included the over-all long position for the EU ETS in

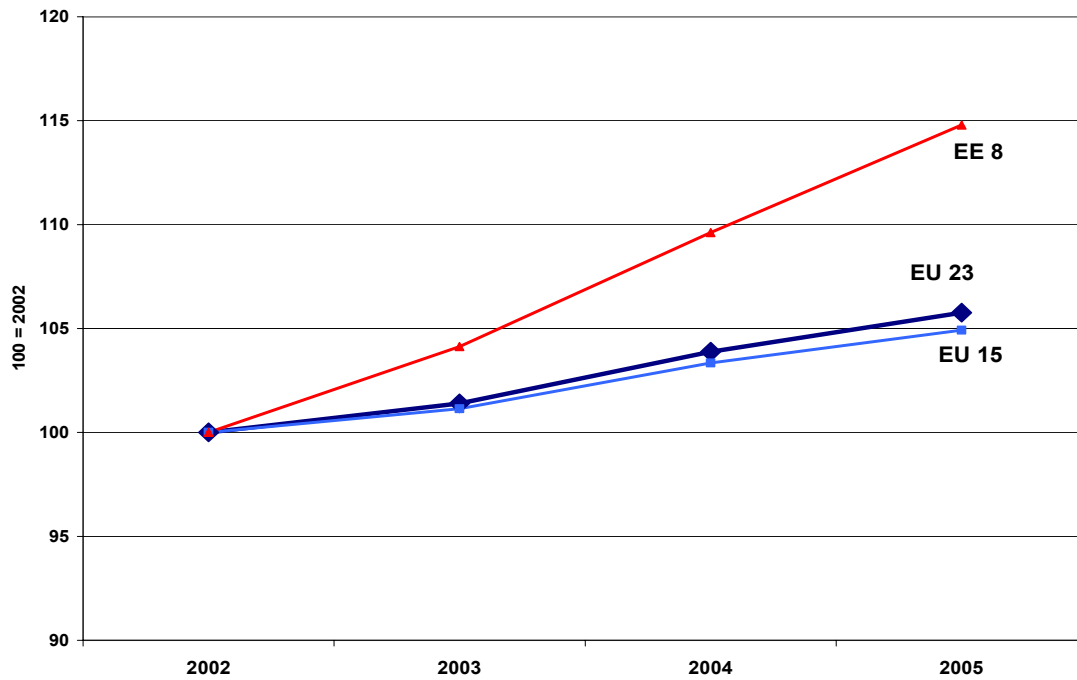
2005 is 8% and not the 4% figure that is based on the distribution to installations. This extra length has definite implications for the price of EUAs, but for the purpose of determining abatement in 2005 that extra length is not relevant although it may be for abatement in 2006 and 2007 to the extent that prices decline as a consequence and have an effect on abatement.

### ***C. Changes in Real Output and Carbon Intensity since 2002***

The comparison of verified emissions with the baseline in the preceding section does not take account of factors that would influence the level of CO<sub>2</sub> emissions between 2002 and 2005. Continuing GDP growth, or more specifically in growth in the output of the sectors included in the EU ETS, would be expected to cause emissions to increase and for the 2005 counterfactual to be higher than the historical baseline. Also, CO<sub>2</sub> emissions typically do not grow at the same rate as real output because of the observed, long standing tendency towards improved carbon intensity for most economies. In addition to these trend factors, there are a number of unpredictable conditions, such as the weather and energy prices, that will increase or decrease counterfactual emissions and the demand for allowances depending on their realization relative to the initial expectation.

Economic growth since 2002 has been relatively robust in the EU and particularly in the East European accession states as shown in Figure 10 where an index describing developments in GDP measured in constant prices in Europe in relation to the year 2002 is depicted. For the EU as a whole, GDP has grown by almost 6 percent by 2005 compared to 2002. The figure is slightly lower for the EU15 where most of the economic activity occurs and significantly higher, +15 percent, for the Eastern European countries. We use 2002 as an approximate center point for the baseline emissions although for some countries with longer baseline periods, it might more appropriately be earlier.

Figure 10. GDP growth in the European Union

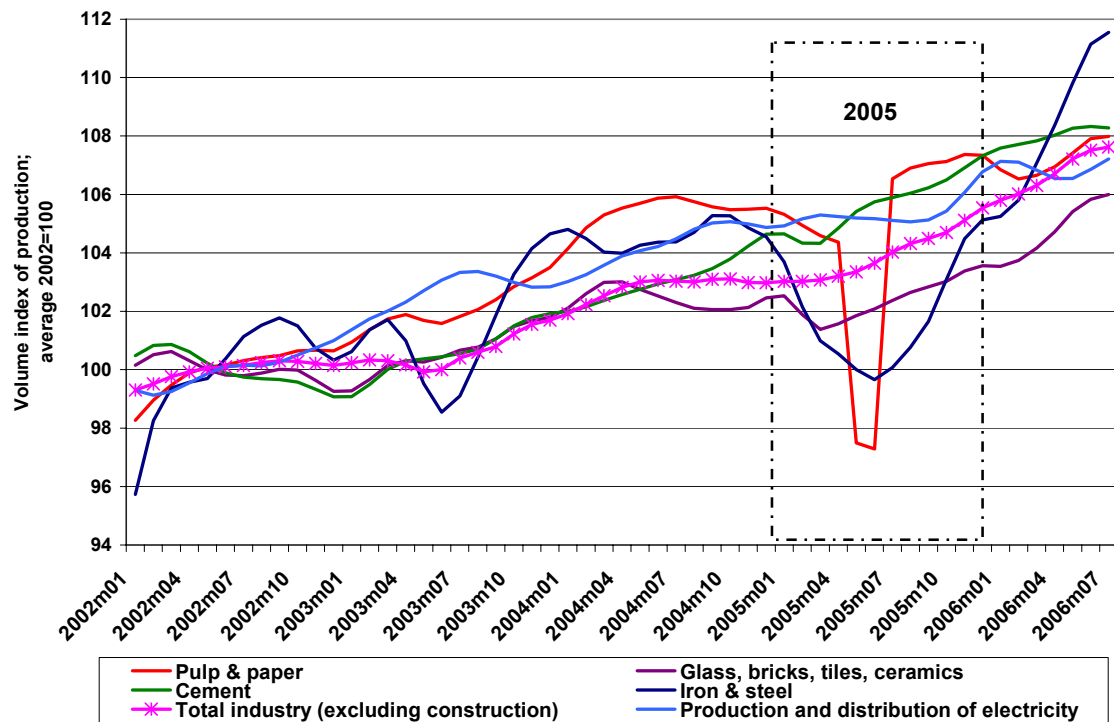


Source: Own calculations based on IMF data.

GDP reflects a broader definition of economic activity than what is included in the EU ETS, but the same pattern obtains when more sector-specific indices of economic activity are used, as shown by Figure 11.



Figure 11. Indicators of economic activity in the EU25 (2002-2006)



Source: Own calculations based on Eurostat data.

These indices shown monthly activity since the beginning of 2002 through mid-2006 and each series is normalized to its average value in 2002. All of these indices indicate higher levels of real output in 2005 than in 2002. The two most important series, electricity and industrial output excluding construction are about 5.5% and 4.0% above the average 2002 level of output. More specific, industrial sector indices show increases of about 6% for cement, 5% for pulp and paper, 3% for iron and steel, and 2.3% for glass, bricks, tiles, and ceramics. Temporary declines in output of iron and steel and of pulp and paper can be observed in 2005, but these were temporary and the output levels observed as of mid-2006 for all sectors are higher than in 2005.

Since CO<sub>2</sub> emissions typically do not increase at the same rate as broad indicators of economic activity, some estimate of the improvement in CO<sub>2</sub> intensity must be taken into account in estimating a counterfactual for 2005. Because of the paucity of industry-specific data on carbon intensity, we examine first the trends in carbon intensity for the

economy as a whole for the EU and its constituent parts and then consider whether the economy-wide data can be considered representative of the EU ETS sectors based on the sector specific data that is available.

Table 3 provides a comparison of the annual rates of growth for real GDP, CO<sub>2</sub> emissions, and the implied change in CO<sub>2</sub> intensity between 1995-2000 and 2000-2004 for the EU23, the EU15 and the EE8. Real GDP growth has been less in recent years than in the last half of the 1990s but the recent rate of increase in CO<sub>2</sub> emissions has been greater than in the earlier period. The inescapable result is that the rate in improvement in CO<sub>2</sub> intensity slowed noticeably around 2000. These trends are especially pronounced in the EU15, but they are also true for the new East European member states. CO<sub>2</sub> intensity is still improving, especially in Eastern Europe, has diminished sufficiently that the CO<sub>2</sub> emissions are increasing at a faster rate than they were in the late 1990s despite slower growth in real GDP.

*Table 3. Trends in Real GDP, CO<sub>2</sub> emissions, and CO<sub>2</sub> intensity*

|             |                                 | Annual changes in percent |           |
|-------------|---------------------------------|---------------------------|-----------|
|             |                                 | 1995-2000                 | 2000-2004 |
| <b>EU23</b> | <b>Real GDP</b>                 | +2.9%                     | +1.8%     |
|             | <b>CO<sub>2</sub> Emissions</b> | +0.1%                     | +1.0%     |
|             | <b>CO<sub>2</sub> Intensity</b> | -2.7%                     | -0.8%     |
| <b>EU15</b> | <b>Real GDP</b>                 | +2.8%                     | +1.6%     |
|             | <b>CO<sub>2</sub> Emissions</b> | +0.4%                     | +1.1%     |
|             | <b>CO<sub>2</sub> Intensity</b> | -2.3%                     | -0.5%     |
| <b>EE8</b>  | <b>Real GDP</b>                 | +4.3%                     | +3.6%     |
|             | <b>CO<sub>2</sub> Emissions</b> | -1.8%                     | +0.2%     |
|             | <b>CO<sub>2</sub> Intensity</b> | -5.8%                     | -3.3%     |

Source: CO<sub>2</sub> emissions from EEA (2006a). Own calculations for GDP based on IMF data weighted at 2004 PPP values. Intensity calculated.

This slowing in the rate of decline in CO<sub>2</sub> intensity since 2000 raises an obvious problem with extrapolating the declines in carbon and energy intensity experienced during the 1990s beyond 2000. For the purpose of establishing a counterfactual for 2005, we assume that the trend prevailing since 2000 is the appropriate one. Economy-wide CO<sub>2</sub> emissions data are available for two of the three years between 2002 and 2005 and nothing in the data for 2005 suggests that the trend has reversed. In fact, given the 2004

data and the increase in real output between 2004 and 2005, a return to the 2002 emissions level (without the EU ETS) would imply a one-year improvement in carbon intensity on the order of 6%, which is outside the range of historical experience.

The critical issue with the use of economy-wide data is whether it is representative of the sub-set of the economy that the EU ETS comprises. Fortunately, data is available that can help resolve this dilemma. Eurostat publishes data on the energy intensity of the EU economy as a whole and of industry as distinct from transportation, households, agriculture, etc. While energy intensity is not identical with CO<sub>2</sub> intensity, it is an important determinant. Table 4 presents that comparison.

*Table 4. Annual rates of improvement in European energy intensity*

|                    | Rate of improvement in the economy's energy intensity |           | Rate of improvement in the industry's energy intensity |           |
|--------------------|---|-----------|--|-----------|
|                    | 1995-2000   | 2000-2004 | 1995-2000  | 2000-2003 |
| <b>EU25</b>        | -1.9  | -0.5      | -1.6   | -0.1      |
| <b>EU15</b>        | -1.4  | -0.4      | -1.0   | 0.2       |
| <b>Austria</b>     | -1.6  | 2.2       | -0.5   | 1.8       |
| <b>Belgium</b>     | -0.2  | -3.0      | -0.3   | -0.4      |
| <b>Denmark</b>     | -3.0  | -0.9      | -2.9   | 0.3       |
| <b>Finland</b>     | -2.1  | 1.1       | -2.4   | -0.7      |
| <b>France</b>      | -1.3  | -0.2      | -  | -         |
| <b>Germany</b>     | -1.8  | -0.1      | -1.4   | -0.3      |
| <b>Greece</b>      | -0.4  | -2.2      | -1.5   | -5.3      |
| <b>Ireland</b>     | -3.9  | -2.6      | -  | -         |
| <b>Italy</b>       | -0.6  | 0.3       | 1.1  | -0.3      |
| <b>Luxembourg</b>  | -4.5  | 1.0       | -6.6   | -5.1      |
| <b>Netherlands</b> | -2.8  | 0.6       | -0.5   | 1.7       |
| <b>Portugal</b>    | 0.4   | -0.2      | 1.5  | 2.1       |
| <b>Spain</b>       | -0.1  | -0.5      | 0.1  | 1.9       |
| <b>Sweden</b>      | -3.8  | 0.3       | -3.5   | -3.8      |
| <b>UK</b>          | -1.9  | -2.2      | -1.3   | 0.6       |
| <b>Cyprus</b>      | 0.1   | -1.8      | 1.8  | -2.9      |
| <b>CZ</b>          | -1.6  | -1.0      | -5.1   | -3.9      |
| <b>Estonia</b>     | -6.8  | -1.5      | -9.6   | -5.9      |
| <b>Hungary</b>     | -3.8  | -2.8      | -6.7   | -2.3      |
| <b>Latvia</b>      | -4.8  | -2.0      | -3.8   | -4.4      |
| <b>Lithuania</b>   | -5.7  | -1.5      | -7.6   | -0.9      |
| <b>Malta</b>       | -1.1  | -0.9      | -  | -         |
| <b>Poland</b>      | -5.9  | -3.1      | -7.5   | -3.7      |
| <b>Slovakia</b>    | -3.5  | -2.7      | -2.3   | 0.4       |
| <b>Slovenia</b>    | -2.8  | -0.9      | -0.8   | -1.2      |

Source: Eurostat and own calculations.

While the industry data do not extend to 2004, it is evident that for the EU as a whole, the trends observed for energy intensity in the economy wide aggregates are true for the industrial sector. The same break in trend around 2000 can be observed in energy intensity for the industrial sectors and for the economy as a whole for the EU25 and the EU15, as well as for fifteen of the twenty-five member states. For the ten member states with highlighted figures in Table 4, a trend to increasing energy efficiency can be observed in either the economy-wide or industry figures rates of change. However, when aggregated to the EU25 or EU15 level, the data is consistent with a trend to less improvement in carbon intensity since 2000. Moreover, the rates of improvement in energy intensity for the industrial sectors are generally not as great for the economy as a whole and the slowdown in improvement is more pronounced for the industrial sectors than for the economy as a whole.

A second source of data on emissions has been recently released by the European Environmental Agency in its annual assessment of progress towards the Kyoto goals (EEA, 2006b). It provides indices of GHG emissions for industry excluding construction through 2004 that permit comparison of late 1990s trends with the years since 2000. Again, GHG emissions are not the same as CO<sub>2</sub> emissions, but the latter constitute most of the former. These data series show the same break in emissions trends around 2000 and rising GHG emissions between 2002 and 2004.

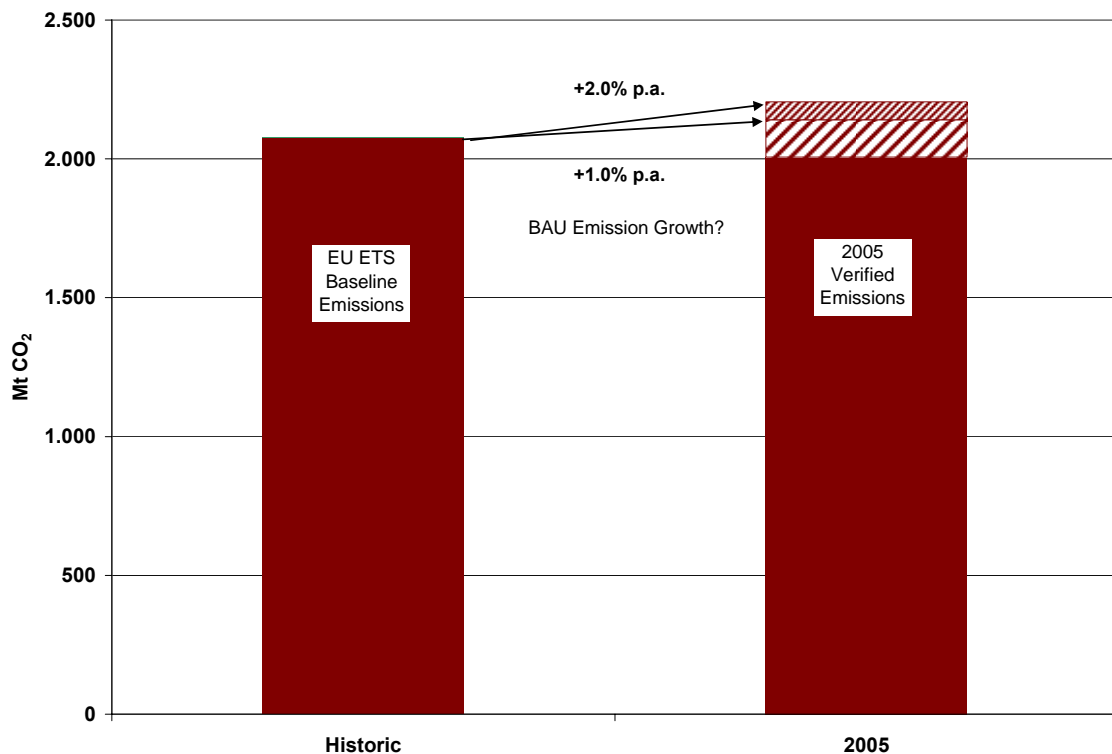
Based on these two sources of data that are more directly applicable to the EU ETS sectors, we believe that it is unlikely that the trends in CO<sub>2</sub> intensity that were evident through 2004 for the EU economies as a whole were not also broadly true for the EU ETS sectors. Given the observed increase in real output for the EU ETS sectors, it is very unlikely that CO<sub>2</sub> emissions from the installations included in the scheme would have declined in the absence of the EU ETS and the significant price that was paid for CO<sub>2</sub> emissions in 2005.

### ***D. Estimating the Counterfactual and Abatement***

Figure 12 summarizes the problem of estimating the counterfactual and thereby determining the amount of CO<sub>2</sub> emission reduction that was effected by the EU ETS in 2005. There are two data points: the imperfect baseline emissions, which we take to reflect approximately 2002 emissions of the EU ETS installations, and verified emissions in 2005. The critical issue is: What would have been the rate of change in BAU emissions in the absence of the EU ETS?

Real GDP and the relevant sector-specific indicators of economic activity indicate annual growth of about 2% for the EU as a whole. While the decline in carbon intensity since 2000 has been significantly less than what was experienced in the 1990s, it has not stopped so that 2% annual growth in counterfactual CO<sub>2</sub> emissions would seem to be an upper limit that would also take account of the effect of the generally adverse weather conditions in 2005 and the effects of higher natural gas prices on counterfactual emissions and the demand for EUAs. Given the growth in real GDP and the post-2000 trend in CO<sub>2</sub> intensity, it is unlikely that the lower limit on the feasible growth of BAU emissions would be less than one percent. Accordingly, it appears likely that counterfactual emissions increased to a level that in 2005 would have been from 3% to 6% higher than the level of emissions for the EU ETS installations in 2002. The two arrows in Figure 12 represent these two limiting assumptions about the growth of CO<sub>2</sub> emissions absent the EU ETS, given what we can now observe concerning the growth in real output in the EU ETS sectors, the post-2000 trend in CO<sub>2</sub> intensity, and the evolution of CO<sub>2</sub> emissions through 2004.

Figure 12. A scenario for BAU emissions in the absence of the EU ETS



Assuming for the moment that the baseline emissions accurately reflect 2002 emissions for the EU ETS installations, these limiting assumptions imply that the counterfactual lies between 2.14 and 2.21 billion tonnes of CO<sub>2</sub>. Since verified emissions are 2.01 billion tonnes, the indicated reduction of CO<sub>2</sub> emissions is between approximately 130 and 200 million tonnes, or 7% to 10% of what emissions would otherwise have been. However, the assumption of an accurate baseline is open to serious challenge because of the less than ideal conditions under which the baseline data on installation level emissions were collected. These conditions undoubtedly produced errors, but errors operate in both directions. The more serious concern in estimating a counterfactual is the likelihood of bias, which would imply that the errors are disproportionately and systematically in one direction. To the best of our knowledge, no one has done the empirical work to prove the bias or to develop a better estimate of the level of historical emissions for the EU ETS installations prior to 2005 or of counterfactual emissions in 2005. In any case, the critical issue is: What is the magnitude of bias? Or to turn the question around: How much bias

would have to be assumed to support a conclusion of no abatement of CO<sub>2</sub> emissions by EU ETS installations in 2005?

One way of addressing this question is to take a country-specific approach to estimating counterfactual emissions that allows a distinction to be made among member states in adjusting baselines. The primary distinction would be between the new accession countries of Eastern Europe and the EU 15. For the former, historical data were of poor quality and of questionable relevance given the ongoing rapid structural change in those economies. Consequently, there was a greater tendency to rely on projections instead of historical data in allocating allowances at the installation level. Generally, these conditions did not exist among the EU15 or nearly to the same degree. Accordingly, it is plausible that more bias exists in the baselines of the East European states than in those of the EU15.

To develop the alternative estimate of the counterfactual, we take the reported baseline emissions (without adjustment) and assume that CO<sub>2</sub> emissions in the EU ETS sectors increased at an annual rate that is the product of the annual increase in observed real GDP between 2002 and 2005 and the rate of decline in CO<sub>2</sub> intensity that was experienced between 2000 and 2004 for each country. That calculation and the resulting data are provided in detail in Annex VI and summarized in the first panel of Table 5.

*Table 5. A country-specific approach to calculating emission reductions*

|   | <b>Baseline Emissions (Mt CO<sub>2</sub>)</b> | <b>2005 BAU Emissions (Mt CO<sub>2</sub>)</b> | <b>Verified Emissions (Mt CO<sub>2</sub>)</b> | <b>Indicated Reduction (Mt CO<sub>2</sub>)</b> | <b>Percent Reduction</b> |
|---|---|---|---|--|--------------------------|
| <b>Without adjustment of baseline emissions</b> |   |   |   |  |                          |
| <b>EU23</b>                                     | 2,078   | 2,150 (+3.5%)                                 | 2,007   | -144   | -6.7%                    |
| <b>EU15</b>                                     | 1,677   | 1,729 (+3.1%)                                 | 1,637   | -93  | -5.4%                    |
| <b>EE8</b>                                      | 401   | 421 (+4.8%)                                   | 370   | -51  | -12.1%                   |
| <b>With adjustment of baseline emissions</b>    |   |   |   |  |                          |
| <b>EU23</b>                                     | 1,946 (-6.4%)                                 | 2,014 (+3.5%)                                 | 2,007   | -7.6   | -0.4%                    |
| <b>EU15</b>                                     | 1,593 (-5.0%)                                 | 1,642 (+3.1%)                                 | 1,637   | -5.5   | -0.3%                    |
| <b>EE8</b>                                      | 353 (-12.0%)                                  | 370 (+4.8%)                                   | 370   | -0.2   | -0.1%                    |

Source: Own calculations based on data from CITL, DEHSt (2005), EEA (2006a) and IMF.

The indicated growth in counterfactual emissions for the EU15 and EE8 between 2002 and 2005 is 3.1% and 4.8%, respectively, or 3.5% for the EU as a whole. The indicated abatement is nearly 145 million tonnes or 7% with percentage reductions of 5.4% for the EU15 and 12.1% for the eight East European member states.

The greater proportionate reduction in the East than in the West seems unlikely. There probably was some abatement in the East, and no doubt cheaper abatement opportunities exist there than in the EU15; but firms in Eastern Europe are less attuned to market opportunities than those in the EU15; and, if they are, they would have been impeded from trading by the delays in final approvals of several NAPs and in setting up the East European registries. A more likely explanation is that the baseline emissions for the East European countries contain more bias than those of the EU15. Accordingly, the second panel repeats the same calculation concerning growth of emissions that was made in the first panel but from baselines that have been lowered by percentages that would be required to sustain a conclusion of no abatement in the EU15 and EE8. The implied adjustments are 5% for EU15 countries and 12% for the eight new accession members. Both of these seem unlikely to us as estimates of cumulative, systemic bias, although undoubtedly errors of this magnitude will exist in the data for individual installations or small sub-sets.

Until better estimates based on more detailed country- and sector-specific research have been done, it is not possible to make a reliable estimate of abatement. Nevertheless, it is unlikely that there was no abatement in 2005. It is also unlikely that the abatement was as much as 200 million tonnes. The tentative calculations presented in Table 5 would suggest 140 million tonnes adjusted downward by however much is the bias in the baseline emissions data. An amount half this much—abatement of slightly over 3%—seems not unreasonable, but it is arbitrary and must remain so until better data and more careful assessments can be made.

In the meantime, the refutable presumption must be that the EU ETS succeeded in abating CO<sub>2</sub> emissions in 2005 based on three observations.



1. **A Positive EUA Price.** A significant price is being paid for CO<sub>2</sub>, which reason suggests would have the effect of reducing emissions as firms adjust to this new economic reality.
2. **Rising Real Output.** Real output in the EU has been rising at the same time that the rate of improvement in CO<sub>2</sub> intensity has been declining, which has led to rising CO<sub>2</sub> emissions before 2005.
3. **Historical Emissions Data** that indicate a reduction of emissions even after allowing for plausible bias.

The amount of emission reduction in 2005 may be modest, but so is the ambition of the 1<sup>st</sup> period cap. Given the problems of getting the system started and the changes in management and regulatory practice implied, even a modest amount of abatement may seem surprising, but the available evidence makes it hard to argue that there was none.

## V. CONCLUDING COMMENTS

The question posed in the title to this paper is whether the 2005 emissions data reveal over-allocation or abatement. Any reasonable answer to this question will acknowledge that both have occurred and this paper has attempted to develop estimates of the magnitude of both.

Over-allocation has the unfortunate attribute of depending on the eye of the beholder, especially when viewed *ex post*. Nevertheless, there are plausible, empirical measures that can be developed. The one that we suggest is the ratio of an aggregate's net long (short) position to the sum of the long (short) positions of that aggregate's components. When some sizeable aggregate is long on balance and this ratio is close to unity, the likelihood of over-allocation is high. As we have noted, there are circumstances that would produce a high ratio without over-allocation, so that the presumption of over-allocation can be refuted if such circumstance can be convincingly shown. It is also possible that the over-allocation was intentional, as was arguably the case for the industrial sectors included in the EU ETS, in which case the attribute is the reflection of some equity consideration. Our analysis based on the application of the net ratio indicates that over-allocation occurred and that its magnitude may have been as much as 100 million EUAs.

Whatever the extent of over-allocation, that estimate does not say much about abatement. In a trading system, it is not the allocation to an installation that causes a firm to reduce emissions, but the price that it must pay, even if in opportunity cost, for its emissions. Whatever one thinks of the allocation in the first period, there can be no doubt that a price was paid and a cost incurred for CO<sub>2</sub> emissions emitted by covered installations in 2005. Therefore, the question can be posed: What was the effect of this price? The data to answer this question are not nearly as good as they should be, but our analysis of what is available indicates that CO<sub>2</sub> emissions were reduced by an amount that was probably larger than 50 million tonnes and less than 200 million tonnes.

These very tentative estimates of over-allocation and abatement have important implications. If abatement was at least 50 million tonnes, more than half (and perhaps all) of the long position revealed for the EU as a whole by the 2005 emissions data cannot be attributed to over-allocation. If over-allocation has occurred, even if on the order of 100 million tonnes, the clear implication is that EUA prices are lower because of the over-allocation, assuming those EUAs have found (or will find) their way to the market.

This reasoning raises the interesting question of what was the source of the surprise that caused EUA prices to drop so sharply when the 2005 emissions data were revealed in April and May of 2006. It cannot have been the total number of allowances which had been known since at least mid-2005 when the last first period NAP was approved. Moreover, that total included whatever “over-allocation” had occurred and all observers recognized that this cap was not very demanding. The surprise concerned the revealed level of emissions. One plausible explanation is that market observers had over-estimated the level of CO<sub>2</sub> emissions and the demand for allowances caused by rising real output, the adverse weather in 2005, and the higher prices for natural gas relative to coal. But, another more intriguing possibility is that market observers under-estimated the amount of abatement that would occur in the first year of the EU ETS as the managers of affected facilities incorporated CO<sub>2</sub> prices into their production decisions. When revealed to be wrong, an under-estimate of abatement would have the same effect on EUA prices as an over-estimate of counterfactual emissions. Our analysis suggests that such an under-estimate is a distinct possibility. Moreover, experience with emissions trading regimes in the U.S. has shown that unexpected abatement always occurs. And it is unexpected

because abatement is so often conceived as resulting only from large machines that engineers can design and regulators mandate and not from the small, incremental changes in production and production processes that managers of existing facilities make in adjusting to new economic realities. These pedestrian changes can cumulatively make a perceptible difference and they are one of the main reasons for choosing market-based instruments, such as the EU ETS.

## REFERENCES

- Community Independent Transaction Log (CITL, 2006). Data on allocation and compliance. European Commission, Brussels. <http://ec.europa.eu/environment/ets/>
- Ellerman, A. Denny, Paul L. Joskow, Richard Schmalensee, Juan-Pablo Montero and Elizabeth M. Baily (Ellerman *et al.*, 2000). *Markets for Clean Air: The U.S. Acid Rain Program*. Cambridge University Press, 2000.
- Ellerman, A. Denny, Barbara Buchner, and Carlo Carraro (Ellerman, Buchner & Carraro, forthcoming). *Allocation in the EU Emissions Trading Scheme: Rents, Rights, and Fairness*. Cambridge University Press, forthcoming.
- European Environmental Agency (EEA, 2006a). Annual European Community greenhouse gas inventory 1990–2004 and inventory report 2006, EEA Technical Report No 6/2006. Copenhagen, 2006. Available at: <http://www.eea.europa.eu>
- European Environment Agency (EEA, 2006b). *Greenhouse gas emission trends and projections in Europe 2006*. EEA Report No 9/2006. Copenhagen, 2006. Available at: <http://www.eea.europa.eu>.
- Energy Information Administration (EIA, 2006). International Energy Annual 2004, Official Energy Statistics from the U.S. Government., Washington D.C.
- Eurostat (2006). Statistical data on monthly production index, on monthly data of industry and services, and on energy intensity of the economy and the industry, Statistical Office of the European Communities.
- German Emissions Trading Authority (DEHSt, 2005). Implementation of emissions trading in the EU: National Allocation Plans of all EU States. Prepared in cooperation with the Fraunhofer Institute for Systems and Innovation Research and the Öko-Institut, Berlin.
- International Monetary Fund (IMF, 2006). World Economic Outlook Database, September 2006 Edition, Washington D.C.
- Kettner, Claudia, Angela Koepl, Stefan P. Schleicher, and Gregor Thenius (Kettner *et al.*, 2006). *EU Emissions Trading Scheme: The 2005 evidence*. Austrian Institute for Economic Research (WIFO), Vienna, July 2006.
- Point Carbon (2006). CO<sub>2</sub> prices still too low, Carbon Market Europe, 21 April 2006.
- Point Carbon (2006). Italian companies covered 18 per cent of 2005 shortage by borrowing, Point Carbon News, 30 October 2006.

Appendix I: An overview on the situation in each member state

|                    | Allocation<br>2005<br>t CO <sub>2</sub> | Verified<br>emissions<br>2005<br>t CO <sub>2</sub> | Total<br>number of<br>installations | Gross Short        |            |                   | Gross Long         |             |                   | Net Short /<br>Net Long |            | Installations<br>where<br>allowances=<br>emissions |
|--------------------|---|--|-------------------------------------|--------------------|------------|-------------------|--------------------|-------------|-------------------|-------------------------|------------|--|
|                    |   |  |                                     | t CO <sub>2</sub>  | %          | install<br>ations | t CO <sub>2</sub>  | %           | install<br>ations | t CO <sub>2</sub>       | %          |  |
| <b>TOTAL</b>       | <b>1,995,439,047</b>                    | <b>1,916,174,516</b>                               | <b>10,046</b>                       | <b>180,359,321</b> | <b>9.0</b> | <b>2,903</b>      | <b>259,623,852</b> | <b>13.0</b> | <b>6,800</b>      | <b>79.3</b>             | <b>4.0</b> | <b>343</b>   |
| <b>Austria</b>     | 32,414,872                              | 33,372,841   | 203                                 | 3,311,430          | 10.2       | 78                | 2,353,461          | 7.3         | 122               | -1.0                    | -3.0       | 3  |
| <b>Belgium</b>     | 58,312,155                              | 55,354,096   | 308                                 | 9,986,382          | 17.1       | 73                | 12,944,441         | 22.2        | 235               | 3.0                     | 5.1        | 0  |
| <b>Denmark</b>     | 37,303,720                              | 26,475,718   | 381                                 | 132,605            | 0.4        | 59                | 10,960,607         | 29.4        | 316               | 10.8                    | 29.0       | 6  |
| <b>Finland</b>     | 44,657,504                              | 33,099,660   | 600                                 | 461,390            | 1.0        | 185               | 12,019,234         | 26.9        | 327               | 11.6                    | 25.9       | 88   |
| <b>France</b>      | 150,393,692                             | 131,257,908  | 1086                                | 4,218,956          | 2.8        | 178               | 23,354,740         | 15.5        | 895               | 19.1                    | 12.7       | 13   |
| <b>Germany</b>     | 494,951,117                             | 474,005,179  | 1850                                | 25,256,328         | 5.1        | 605               | 46,202,266         | 9.3         | 1,239             | 20.9                    | 4.2        | 6  |
| <b>Greece</b>      | 71,135,034                              | 71,250,370   | 140                                 | 5,324,854          | 7.5        | 68                | 5,209,518          | 7.3         | 72                | -0.1                    | -0.2       | 0  |
| <b>Ireland</b>     | 19,236,747                              | 22,397,678   | 114                                 | 4,231,567          | 22.0       | 53                | 1,070,636          | 5.6         | 56                | -3.2                    | -16.4      | 5  |
| <b>Italy</b>       | 215,799,016                             | 225,335,126  | 955                                 | 28,453,211         | 13.2       | 538               | 18,917,101         | 8.8         | 404               | -9.5                    | -4.4       | 13   |
| <b>Luxembourg</b>  | 3,229,321                               | 2,603,349  | 15                                  | 0                  | 0.0        | 0                 | 625,972            | 19.4        | 15                | 0.6                     | 19.4       | 0  |
| <b>Netherlands</b> | 86,452,491                              | 80,351,292   | 209                                 | 6,151,089          | 7.1        | 54                | 12,252,288         | 14.2        | 153               | 6.1                     | 7.1        | 2  |
| <b>Portugal</b>    | 36,898,516                              | 36,425,933   | 244                                 | 1,771,813          | 4.8        | 56                | 2,244,396          | 6.1         | 184               | 0.5                     | 1.3        | 4  |
| <b>Spain</b>       | 172,130,788                             | 182,893,568  | 827                                 | 34,816,872         | 20.2       | 221               | 24,054,092         | 14.0        | 573               | -10.8                   | -6.3       | 33   |
| <b>Sweden</b>      | 22,281,227                              | 19,315,482   | 705                                 | 3,171,150          | 14.2       | 204               | 6,136,895          | 27.5        | 436               | 3.0                     | 13.3       | 65   |
| <b>UK</b>          | 206,025,867                             | 242,464,097  | 779                                 | 50,927,842         | 24.7       | 348               | 14,489,612         | 7.0         | 344               | -36.4                   | -17.7      | 87   |
| <b>Cz Republic</b> | 96,910,587                              | 82,454,636   | 395                                 | 168,911            | 0.2        | 42                | 14,624,862         | 15.1        | 352               | 14.5                    | 14.9       | 1  |
| <b>Estonia</b>     | 16,747,054                              | 12,621,824   | 43                                  | 14,832             | 0.1        | 2                 | 4,140,062          | 24.7        | 40                | 4.1                     | 24.6       | 1  |
| <b>Hungary</b>     | 30,236,166                              | 26,027,616   | 235                                 | 1,178,982          | 3.9        | 49                | 5,387,532          | 17.8        | 185               | 4.2                     | 13.9       | 1  |
| <b>Latvia</b>      | 4,070,078                               | 2,854,424  | 96                                  | 23,834             | 0.6        | 12                | 1,239,488          | 30.5        | 78                | 1.2                     | 29.9       | 6  |
| <b>Lithuania</b>   | 13,503,454                              | 6,603,869  | 100                                 | 7,046              | 0.1        | 3                 | 6,906,631          | 51.1        | 90                | 6.9                     | 51.1       | 7  |
| <b>Poland</b>      | 143,140,900                             | 115,057,531  | 488                                 | 549,754            | 0.4        | 34                | 28,633,123         | 20.0        | 454               | 28.1                    | 19.6       | 0  |
| <b>Slovakia</b>    | 30,470,677                              | 25,231,769   | 175                                 | 46,789             | 0.2        | 18                | 5,285,697          | 17.3        | 156               | 5.2                     | 17.2       | 1  |
| <b>Slovenia</b>    | 9,138,064                               | 8,720,550  | 98                                  | 153,684            | 1.7        | 23                | 571,198            | 6.3         | 74                | 0.4                     | 4.6        | 1  |

Appendix II: An overview on each sector's situation

|                               | Allocation<br>2005<br>t CO <sub>2</sub> | 2005 verified<br>emissions<br>t CO <sub>2</sub> | Total<br>number of<br>installations | Gross Short       |      | Gross Long        |      | Net Short / Net Long |       |
|-------------------------------|---|---|-------------------------------------|-------------------|------|-------------------|------|----------------------|-------|
|                               |   |   |                                     | t CO <sub>2</sub> | %    | t CO <sub>2</sub> | %    | t CO <sub>2</sub>    | %     |
| <b>POWER&amp;HEAT</b>         |   |   |                                     |                   |      |                   |      |                      |       |
| <b>EU23</b>                   | 1,170,783,068                           | 1,198,708,781                                   | 3570                                | 157,660,503       | 13.5 | 129,208,590       | 11.0 | 28,451,913           | 2.4   |
| <b>EU15</b>                   | 935,411,200                             | 998,243,257                                     | 2723                                | 155,936,049       | 16.7 | 92,571,173        | 9.9  | 63,364,876           | 6.8   |
| <b>EE8</b>                    | 235,371,868                             | 200,465,524                                     | 847                                 | 1,724,454         | 0.7  | 36,637,417        | 15.6 | -34,912,963          | -14.8 |
| <b>REFINERIES</b>             |   |   |                                     |                   |      |                   |      |                      |       |
| <b>EU23</b>                   | 142,553,291                             | 132,997,989                                     | 136                                 | 2,687,055         | 1.9  | 12,204,279        | 8.6  | -9,517,224           | -6.7  |
| <b>EU15</b>                   | 137,067,072                             | 128,756,423                                     | 126                                 | 2,687,055         | 2.0  | 10,959,626        | 8.0  | -8,272,571           | -6.0  |
| <b>EE8</b>                    | 5,486,219                               | 4,241,566                                       | 10                                  |                   | 0.0  | 1,244,653         | 22.7 | -1,244,653           | -22.7 |
| <b>IRON, STEEL &amp; COKE</b> |   |   |                                     |                   |      |                   |      |                      |       |
| <b>EU23</b>                   | 159,638,364                             | 127,241,724                                     | 235                                 | 1,816,331         | 1.1  | 34,203,974        | 21.4 | -32,387,643          | -20.3 |
| <b>EU15</b>                   | 141,054,277                             | 119,159,278                                     | 210                                 | 1,791,809         | 1.3  | 23,677,811        | 16.8 | -21,886,002          | -15.5 |
| <b>EE8</b>                    | 18,584,087                              | 8,082,446                                       | 25                                  | 24,522            | 0.1  | 10,526,163        | 56.6 | -10,501,641          | -56.5 |
| <b>PULP&amp;PAPER</b>         |   |   |                                     |                   |      |                   |      |                      |       |
| <b>EU23</b>                   | 38,635,691                              | 30,628,002                                      | 795                                 | 771,988           | 2.0  | 8,485,611         | 22.0 | -7,713,623           | -20.0 |
| <b>EU15</b>                   | 35,629,925                              | 28,734,717                                      | 720                                 | 762,395           | 2.1  | 7,387,681         | 20.7 | -6,625,286           | -18.6 |
| <b>EE8</b>                    | 3,005,766                               | 1,893,285                                       | 75                                  | 9,593             | 0.3  | 1,097,930         | 36.5 | -1,088,337           | -36.2 |
| <b>CEMENT&amp;LIME</b>        |   |   |                                     |                   |      |                   |      |                      |       |
| <b>EU23</b>                   | 174,663,015                             | 161,419,401                                     | 462                                 | 7,534,377         | 4.3  | 19,873,806        | 11.4 | -12,339,429          | -7.1  |
| <b>EU15</b>                   | 155,051,883                             | 147,237,414                                     | 399                                 | 7,464,191         | 4.8  | 14,374,475        | 9.3  | -6,910,284           | -4.5  |
| <b>EE8</b>                    | 19,611,132                              | 14,181,987                                      | 63                                  | 70,186            | 0.4  | 5,499,331         | 28.0 | -5,429,145           | -27.7 |
| <b>GLASS</b>                  |   |   |                                     |                   |      |                   |      |                      |       |

|                                       |            |            |      |         |     |           |      |            |       |
|---------------------------------------|------------|------------|------|---------|-----|-----------|------|------------|-------|
| <b>EU23</b>                           | 19,315,789 | 17,112,080 | 344  | 464,039 | 2.4 | 2,462,392 | 12.7 | -1,998,353 | -10.3 |
| <b>EU15</b>                           | 17,127,707 | 15,407,853 | 297  | 450,383 | 2.6 | 1,934,143 | 11.3 | -1,483,760 | -8.7  |
| <b>EE8</b>                            | 2,188,082  | 1,704,227  | 47   | 13,656  | 0.6 | 528,249   | 24.1 | -514,593   | -23.5 |
| <b>CERAMICS,<br/>BRICKS&amp;TILES</b> |            |            |      |         |     |           |      |            |       |
| <b>EU23</b>                           | 16,430,329 | 13,257,432 | 1035 | 475,507 | 2.9 | 3,401,801 | 20.7 | -2,922,327 | -17.8 |
| <b>EU15</b>                           | 13,662,675 | 11,090,958 | 868  | 427,983 | 3.1 | 2,721,570 | 19.9 | -2,293,587 | -16.8 |
| <b>EE8</b>                            | 2,767,654  | 2,166,474  | 167  | 47,524  | 1.7 | 680,231   | 24.6 | -628,740   | -22.7 |

Appendix IIIa: An overview on the data used to derive GDP trends in each member state

|                    | <b>Gross domestic product at constant market prices<br/>(Billions, National currency)</b> |             |             |             |             |             |             |
|--------------------|---|-------------|-------------|-------------|-------------|-------------|-------------|
|                    | <b>1995</b>   | <b>2000</b> | <b>2001</b> | <b>2002</b> | <b>2003</b> | <b>2004</b> | <b>2005</b> |
| <b>Austria</b>     | 182.0   | 210.4       | 212.1       | 214.0       | 216.3       | 221.6       | 226.1       |
| <b>Belgium</b>     | 220.8   | 251.5       | 254.5       | 258.2       | 260.6       | 266.8       | 270.9       |
| <b>Denmark</b>     | 1124.1  | 1294.0      | 1303.1      | 1309.2      | 1318.2      | 1342.9      | 1386.2      |
| <b>Finland</b>     | 104.8   | 132.3       | 135.8       | 138.0       | 140.4       | 145.4       | 149.6       |
| <b>France</b>      | 1263.3  | 1442.5      | 1468.7      | 1485.0      | 1501.8      | 1532.3      | 1550.6      |
| <b>Germany</b>     | 1873.8  | 2062.5      | 2088.1      | 2088.3      | 2083.2      | 2109.2      | 2127.5      |
| <b>Greece</b>      | 79.9  | 94.7        | 99.5        | 103.3       | 108.2       | 113.3       | 117.4       |
| <b>Ireland</b>     | 76.2  | 121.0       | 127.9       | 135.6       | 141.5       | 147.6       | 155.7       |
| <b>Italy</b>       | 1083.8  | 1191.1      | 1212.4      | 1216.6      | 1217.0      | 1230.0      | 1229.6      |
| <b>Luxembourg</b>  | 16.3  | 22.0        | 22.6        | 23.4        | 23.9        | 24.9        | 25.9        |
| <b>Netherlands</b> | 367.4   | 441.4       | 447.7       | 448.1       | 449.6       | 458.4       | 465.4       |
| <b>Portugal</b>    | 100.1   | 122.3       | 124.7       | 125.7       | 124.3       | 125.7       | 126.2       |
| <b>Spain</b>       | 515.4   | 630.3       | 652.6       | 670.1       | 690.2       | 711.5       | 735.9       |
| <b>Sweden</b>      | 1891.3  | 2217.3      | 2241.0      | 2285.7      | 2324.4      | 2411.5      | 2476.6      |
| <b>UK</b>          | 884.7   | 1035.3      | 1059.6      | 1081.5      | 1110.3      | 1146.5      | 1167.8      |
| <b>Cz Republic</b> | 2031.1  | 2189.2      | 2242.9      | 2285.5      | 2367.8      | 2467.6      | 2617.8      |
| <b>Estonia</b>     | 70.9  | 92.9        | 98.9        | 106.1       | 113.2       | 122.0       | 134.0       |
| <b>Hungary</b>     | 10820.8   | 13272.2     | 13846.9     | 14375.4     | 14861.6     | 15637.1     | 16280.7     |
| <b>Latvia</b>      | 3.6   | 4.8         | 5.1         | 5.5         | 5.9         | 6.4         | 7.0         |
| <b>Lithuania</b>   | 37.1  | 45.8        | 48.8        | 52.1        | 57.6        | 61.6        | 66.2        |
| <b>Poland</b>      | 337.2   | 438.6       | 443.5       | 449.8       | 467.0       | 491.6       | 508.3       |
| <b>Slovakia</b>    | 785.6   | 941.3       | 971.7       | 1011.7      | 1053.8      | 1110.8      | 1178.8      |
| <b>Slovenia</b>    | 2404.6  | 2981.0      | 3060.2      | 3165.9      | 3249.8      | 3385.2      | 3516.2      |

Source: International Monetary Fund, World Economic Outlook Database, September 2006.

Notes: Estimates start after 2005, except for Belgium, Finland, Hungary, Latvia and Poland where estimates start after 2004



Appendix IIIb: An overview on the data used to calculate GDP based on IMF data weighted at 2004 PPP values

|                    | 2004 GDP based on PPP<br>valuation of country GDP<br>(Billions, current intern. dollar) | 2004 weights  |               | Country-specific indices at constant prices |              |              |              |
|--------------------|---|---------------|---------------|---|--------------|--------------|--------------|
|                    |   | Region        | EU23          | 2002  | 2003         | 2004         | 2005         |
| <b>EU 23</b>       | -   | -             | -             | <b>100.0</b>                                | <b>101.4</b> | <b>103.9</b> | <b>105.8</b> |
| <b>EU 15</b>       | -   | <b>1.0000</b> | <b>0.9145</b> | <b>100.0</b>                                | <b>101.1</b> | <b>103.3</b> | <b>104.9</b> |
| <b>EE 8</b>        | -   | <b>1.0000</b> | <b>0.0855</b> | <b>100.0</b>                                | <b>104.1</b> | <b>109.6</b> | <b>114.8</b> |
| <b>Austria</b>     | 263.3   | 0.0242        | 0.0221        | 100.0                                       | 101.1        | 103.6        | 105.7        |
| <b>Belgium</b>     | 313.5   | 0.0288        | 0.0263        | 100.0                                       | 100.9        | 103.3        | 104.9        |
| <b>Denmark</b>     | 179.4   | 0.0165        | 0.0151        | 100.0                                       | 100.7        | 102.6        | 105.9        |
| <b>Finland</b>     | 156.3   | 0.0144        | 0.0131        | 100.0                                       | 101.8        | 105.3        | 108.4        |
| <b>France</b>      | 1758.9  | 0.1616        | 0.1478        | 100.0                                       | 101.1        | 103.2        | 104.4        |
| <b>Germany</b>     | 2440.4  | 0.2242        | 0.2050        | 100.0                                       | 99.8         | 101.0        | 101.9        |
| <b>Greece</b>      | 234.9   | 0.0216        | 0.0197        | 100.0                                       | 104.8        | 109.7        | 113.7        |
| <b>Ireland</b>     | 155.9   | 0.0143        | 0.0131        | 100.0                                       | 104.3        | 108.8        | 114.8        |
| <b>Italy</b>       | 1627.0  | 0.1495        | 0.1367        | 100.0                                       | 100.0        | 101.1        | 101.1        |
| <b>Luxembourg</b>  | 30.1  | 0.0028        | 0.0025        | 100.0                                       | 102.0        | 106.4        | 110.7        |
| <b>Netherlands</b> | 487.6   | 0.0448        | 0.0410        | 100.0                                       | 100.3        | 102.3        | 103.9        |
| <b>Portugal</b>    | 197.4   | 0.0181        | 0.0166        | 100.0                                       | 98.9         | 100.0        | 100.4        |
| <b>Spain</b>       | 1028.8  | 0.0945        | 0.0864        | 100.0                                       | 103.0        | 106.2        | 109.8        |
| <b>Sweden</b>      | 257.0   | 0.0236        | 0.0216        | 100.0                                       | 101.7        | 105.5        | 108.4        |
| <b>UK</b>          | 1753.3  | 0.1611        | 0.1473        | 100.0                                       | 102.7        | 106.0        | 108.0        |
| <b>Cz Republic</b> | 175.8   | 0.1727        | 0.0148        | 100.0                                       | 103.6        | 108.0        | 114.5        |
| <b>Estonia</b>     | 20.2  | 0.0198        | 0.0017        | 100.0                                       | 106.7        | 115.0        | 126.3        |
| <b>Hungary</b>     | 160.2   | 0.1574        | 0.0135        | 100.0                                       | 103.4        | 108.8        | 113.3        |
| <b>Latvia</b>      | 26.4  | 0.0260        | 0.0022        | 100.0                                       | 107.2        | 116.5        | 128.4        |
| <b>Lithuania</b>   | 44.3  | 0.0435        | 0.0037        | 100.0                                       | 110.5        | 118.2        | 127.0        |
| <b>Poland</b>      | 469.4   | 0.4611        | 0.0394        | 100.0                                       | 103.8        | 109.3        | 113.0        |
| <b>Slovakia</b>    | 80.6  | 0.0791        | 0.0068        | 100.0                                       | 104.2        | 109.8        | 116.5        |
| <b>Slovenia</b>    | 41.0  | 0.0403        | 0.0034        | 100.0                                       | 102.7        | 106.9        | 111.1        |

Source: Derived from the authors from IMF.

Appendix IV: CO<sub>2</sub> emissions excluding net CO<sub>2</sub> from LULUCF (CO<sub>2</sub> equivalent, Gg)

|                    | 1995             | 1996             | 1997             | 1998             | 1999             | 2000             | 2001             | 2002             | 2003             | 2004             |
|--------------------|------------------|------------------|------------------|------------------|------------------|------------------|------------------|------------------|------------------|------------------|
| <b>EU23</b>        | <b>3,935,715</b> | <b>4,041,282</b> | <b>3,978,984</b> | <b>3,982,571</b> | <b>3,939,944</b> | <b>3,950,391</b> | <b>4,024,554</b> | <b>4,001,167</b> | <b>4,089,716</b> | <b>4,106,598</b> |
| <b>EU15</b>        | <b>3,283,298</b> | <b>3,361,793</b> | <b>3,310,521</b> | <b>3,354,289</b> | <b>3,331,210</b> | <b>3,355,237</b> | <b>3,420,438</b> | <b>3,415,643</b> | <b>3,484,853</b> | <b>3,505,887</b> |
| <b>EE8</b>         | <b>652,417</b>   | <b>679,489</b>   | <b>668,463</b>   | <b>628,283</b>   | <b>608,734</b>   | <b>595,154</b>   | <b>604,116</b>   | <b>585,524</b>   | <b>604,863</b>   | <b>600,711</b>   |
| <b>Austria</b>     | 63,655           | 67,321           | 67,146           | 66,828           | 65,435           | 66,178           | 70,171           | 71,935           | 77,553           | 77,077           |
| <b>Belgium</b>     | 123,632          | 127,762          | 122,272          | 127,933          | 122,911          | 123,986          | 124,110          | 123,311          | 126,974          | 126,907          |
| <b>Denmark</b>     | 60,450           | 73,967           | 64,464           | 60,403           | 57,532           | 53,070           | 54,669           | 54,262           | 59,454           | 53,941           |
| <b>Finland</b>     | 58,105           | 63,916           | 62,609           | 59,233           | 58,845           | 57,113           | 62,563           | 65,043           | 73,099           | 69,115           |
| <b>France</b>      | 392,983          | 406,682          | 400,834          | 421,272          | 411,141          | 405,647          | 409,263          | 404,706          | 412,090          | 417,353          |
| <b>Germany</b>     | 920,155          | 943,608          | 914,700          | 906,672          | 881,685          | 886,258          | 899,301          | 886,480          | 892,545          | 885,854          |
| <b>Greece</b>      | 87,426           | 89,623           | 94,361           | 98,966           | 98,141           | 103,963          | 106,210          | 105,905          | 109,914          | 110,280          |
| <b>Ireland</b>     | 34,783           | 36,081           | 38,504           | 40,306           | 42,136           | 44,241           | 46,704           | 45,701           | 44,519           | 45,266           |
| <b>Italy</b>       | 445,384          | 438,843          | 443,056          | 454,031          | 459,051          | 463,311          | 469,062          | 470,821          | 486,126          | 489,590          |
| <b>Luxembourg</b>  | 9,276            | 9,390            | 8,681            | 7,705            | 8,437            | 8,952            | 9,227            | 10,226           | 10,702           | 11,997           |
| <b>Netherlands</b> | 170,694          | 178,100          | 171,627          | 173,100          | 167,779          | 169,680          | 175,113          | 174,853          | 178,178          | 180,675          |
| <b>Portugal</b>    | 53,131           | 50,258           | 53,543           | 58,234           | 64,894           | 63,762           | 65,018           | 69,250           | 64,600           | 65,705           |
| <b>Spain</b>       | 255,724          | 242,993          | 262,655          | 270,747          | 296,302          | 307,673          | 311,552          | 330,551          | 333,837          | 354,562          |
| <b>Sweden</b>      | 58,206           | 61,713           | 57,127           | 57,624           | 54,771           | 53,503           | 54,245           | 55,401           | 56,469           | 55,360           |
| <b>UK</b>          | 549,695          | 571,537          | 548,942          | 551,236          | 542,151          | 547,901          | 563,230          | 547,198          | 558,792          | 562,204          |
| <b>Cz Republic</b> | 132,125          | 133,863          | 138,389          | 129,188          | 122,099          | 129,017          | 129,033          | 124,040          | 128,075          | 127,297          |
| <b>Estonia</b>     | 19,315           | 20,264           | 20,225           | 18,318           | 16,771           | 16,849           | 17,103           | 17,312           | 19,106           | 19,232           |
| <b>Hungary</b>     | 60,870           | 62,220           | 60,478           | 60,139           | 60,015           | 57,803           | 59,360           | 57,703           | 60,461           | 59,149           |
| <b>Latvia</b>      | 8,802            | 9,081            | 8,535            | 8,157            | 7,550            | 6,907            | 7,410            | 7,331            | 7,477            | 7,485            |
| <b>Lithuania</b>   | 24,384           | 21,477           | 18,570           | 15,663           | 14,884           | 14,105           | 13,326           | 12,704           | 12,287           | 13,350           |
| <b>Poland</b>      | 348,172          | 372,530          | 361,626          | 337,448          | 329,697          | 314,373          | 317,844          | 308,277          | 319,082          | 315,234          |
| <b>Slovakia</b>    | 14,908           | 15,666           | 15,978           | 15,722           | 15,088           | 15,177           | 16,145           | 16,212           | 16,012           | 16,464           |
| <b>Slovenia</b>    | 43,841           | 44,389           | 44,662           | 43,649           | 42,630           | 40,924           | 43,896           | 41,945           | 42,362           | 42,498           |

Source: European Environmental Agency (2006), Annual European Community greenhouse gas inventory 1990–2004 and inventory report 2006, EEA Technical report No. 6/2006, Copenhagen.

Appendix Va: Energy intensity of the economy

(Gross inland consumption of energy divided by GDP at constant prices, 1995; kgoe per 1000 Euro)

|                    | 1995         | 1996         | 1997         | 1998         | 1999         | 2000         | 2001         | 2002         | 2003         | 2004         |
|--------------------|--------------|--------------|--------------|--------------|--------------|--------------|--------------|--------------|--------------|--------------|
| <b>EU 25</b>       | <b>230.4</b> | <b>235.0</b> | <b>227.6</b> | <b>224.2</b> | <b>214.9</b> | <b>208.8</b> | <b>209.7</b> | <b>206.5</b> | <b>207.6</b> | <b>204.9</b> |
| <b>EU 15</b>       | <b>205.4</b> | <b>209.4</b> | <b>202.7</b> | <b>201.0</b> | <b>195.7</b> | <b>190.5</b> | <b>191.4</b> | <b>188.4</b> | <b>189.5</b> | <b>187.5</b> |
| <b>Austria</b>     | 145.8        | 151.0        | 148.2        | 144.8        | 139.6        | 134.4        | 142.8        | 139.9        | 149.0        | 146.1        |
| <b>Belgium</b>     | 238.6        | 252.3        | 249.0        | 248.8        | 244.0        | 236.1        | 228.1        | 213.6        | 217.4        | 208.2        |
| <b>Denmark</b>     | 146.9        | 161.7        | 146.5        | 140.7        | 132.1        | 125.0        | 126.6        | 123.8        | 126.1        | 120.3        |
| <b>Finland</b>     | 290.6        | 302.4        | 299.1        | 288.9        | 276.0        | 260.1        | 263.8        | 272.2        | 280.1        | 272.1        |
| <b>France</b>      | 199.7        | 209.3        | 198.6        | 197.7        | 191.0        | 186.6        | 188.3        | 186.1        | 188.5        | 185.5        |
| <b>Germany</b>     | 175.2        | 179.2        | 174.2        | 170.2        | 163.9        | 159.7        | 162.5        | 158.7        | 161.0        | 158.8        |
| <b>Greece</b>      | 268.5        | 276.1        | 268.3        | 272.7        | 262.5        | 263.6        | 260.6        | 258.0        | 247.8        | 240.4        |
| <b>Ireland</b>     | 217.0        | 213.4        | 201.7        | 196.8        | 187.7        | 175.1        | 172.5        | 166.1        | 155.2        | 156.9        |
| <b>Italy</b>       | 192.4        | 190.1        | 189.0        | 191.4        | 190.9        | 186.9        | 184.0        | 184.1        | 189.2        | 189.1        |
| <b>Luxembourg</b>  | 241.2        | 238.0        | 216.5        | 197.9        | 192.9        | 186.6        | 190.7        | 196.7        | 181.8        | 194.3        |
| <b>Netherlands</b> | 231.2        | 233.2        | 221.3        | 211.7        | 202.1        | 198.5        | 200.7        | 201.1        | 202.2        | 203.2        |
| <b>Portugal</b>    | 237.3        | 228.6        | 233.2        | 239.2        | 247.4        | 241.5        | 243.9        | 254.7        | 234.7        | 239.6        |
| <b>Spain</b>       | 228.7        | 220.3        | 222.7        | 223.6        | 227.0        | 227.0        | 225.4        | 226.3        | 219.7        | 222.5        |
| <b>Sweden</b>      | 265.5        | 268.4        | 255.4        | 248.5        | 238.2        | 215.0        | 228.9        | 224.3        | 217.1        | 217.5        |
| <b>UK</b>          | 251.5        | 256.1        | 242.0        | 242.7        | 234.3        | 227.3        | 223.7        | 214.5        | 212.1        | 207.2        |
| <b>Cz Republic</b> | 965.8        | 952.1        | 969.5        | 946.5        | 868.4        | 888.4        | 883.9        | 875.8        | 891.2        | 851.8        |
| <b>Estonia</b>     | 1835.2       | 1863.4       | 1659.2       | 1495.3       | 1398.1       | 1214.8       | 1273.0       | 1153.2       | 1179.1       | 1140.2       |
| <b>Hungary</b>     | 740.6        | 747.5        | 700.5        | 661.9        | 642.0        | 600.5        | 588.6        | 579.6        | 566.6        | 534.1        |
| <b>Latvia</b>      | 994.4        | 921.3        | 793.3        | 740.5        | 840.9        | 756.0        | 816.5        | 750.3        | 725.1        | 696.3        |
| <b>Lithuania</b>   | 1691.7       | 1735.2       | 1531.8       | 1592.4       | 1372.2       | 1208.4       | 1256.8       | 1272.7       | 1194.8       | 1135.6       |
| <b>Poland</b>      | 962.8        | 972.9        | 878.5        | 792.3        | 730.2        | 680.2        | 673.5        | 654.2        | 623.1        | 596.6        |
| <b>Slovakia</b>    | 1155.4       | 1051.8       | 1055.8       | 997.6        | 976.5        | 955.9        | 1015.8       | 976.0        | 929.6        | 854.3        |
| <b>Slovenia</b>    | 397.3        | 402.0        | 388.4        | 371.8        | 348.1        | 341.7        | 349.6        | 344.6        | 341.1        | 329.2        |

Source: Eurostat.

Appendix Vb: Energy intensity of industry (index 1995 = 100)

|                    | 1995       | 1996         | 1997        | 1998        | 1999        | 2000        | 2001        | 2002        | 2003        |
|--------------------|------------|--------------|-------------|-------------|-------------|-------------|-------------|-------------|-------------|
| <b>EU 25</b>       | <b>100</b> | <b>100.2</b> | <b>98.5</b> | <b>94.9</b> | <b>91.6</b> | <b>91.8</b> | <b>91.4</b> | <b>90.2</b> | <b>91.6</b> |
| <b>EU 15</b>       | <b>100</b> | <b>99.9</b>  | <b>98.8</b> | <b>96.6</b> | <b>95</b>   | <b>95.2</b> | <b>95.4</b> | <b>94.2</b> | <b>95.9</b> |
| <b>Austria</b>     | 100        | 100.7        | 109.4       | 105.9       | 97.1        | 97.5        | 95.5        | 100         | 102.7       |
| <b>Belgium</b>     | 100        | 95.5         | 97.2        | 98.6        | 100.7       | 98.5        | 97.8        | 91.9        | 97.3        |
| <b>Denmark</b>     | 100        | 100.7        | 95.9        | 93.4        | 90.7        | 85.3        | 87.6        | 87.1        | 86          |
| <b>Finland</b>     | 100        | 98           | 98          | 94.8        | 95.6        | 88.2        | 84.6        | 86.5        | 86.3        |
| <b>Germany</b>     | 100        | 100.3        | 94.4        | 92.8        | 90.2        | 92.8        | 90.5        | 90.1        | 92.1        |
| <b>Greece</b>      | 100        | 102.6        | 104.6       | 99.3        | 91.3        | 92.4        | 87.8        | 85.3        | 77.7        |
| <b>Italy</b>       | 100        | 99           | 101.3       | 98.6        | 105.2       | 105.6       | 100.8       | 101.2       | 104.7       |
| <b>Luxembourg</b>  | 100        | 95.1         | 80.9        | 66.3        | 68.8        | 67.2        | 62.7        | 58.7        | 57          |
| <b>Netherlands</b> | 100        | 102.4        | 101.6       | 99          | 94.3        | 97.7        | 96.6        | 96.5        | 102.7       |
| <b>Portugal</b>    | 100        | 97           | 101.7       | 105.4       | 105.9       | 107.5       | 121.4       | 114.3       | 114.2       |
| <b>Spain</b>       | 100        | 95           | 99.4        | 98.2        | 92.5        | 100.3       | 102.6       | 103.6       | 105.9       |
| <b>Sweden</b>      | 100        | 99.9         | 95.6        | 90.9        | 84.8        | 82.5        | 76.8        | 74.6        | 73.1        |
| <b>UK</b>          | 100        | 100.9        | 100.1       | 96.1        | 97.6        | 93.7        | 97.3        | 92.2        | 95.4        |
| <b>Cz Republic</b> | 100        | 90.4         | 93.2        | 91.6        | 72.6        | 74.6        | 74.3        | 68.9        | 65.8        |
| <b>Estonia</b>     | 100        | 106          | 84.1        | 70          | 55.4        | 51.8        | 53.1        | 41.7        | 42.7        |
| <b>Hungary</b>     | 100        | 102.5        | 86          | 79.7        | 71.5        | 66.6        | 67.6        | 68.7        | 62          |
| <b>Latvia</b>      | 100        | 156.2        | 144.3       | 101.9       | 93.8        | 81.1        | 77.8        | 74.5        | 70.3        |
| <b>Lithuania</b>   | 100        | 89           | 86.5        | 76          | 66.8        | 62.1        | 56.8        | 58.1        | 60.4        |
| <b>Poland</b>      | 100        | 99.7         | 89.6        | 75.6        | 64.2        | 62.6        | 58.7        | 57.1        | 55.6        |
| <b>Slovakia</b>    | 100        | 86.1         | 89.4        | 82.6        | 79.7        | 88.6        | 91          | 93.1        | 89.6        |
| <b>Slovenia</b>    | 100        | 95.7         | 92.3        | 85.8        | 85.3        | 95.9        | 85.4        | 80.4        | 92.4        |

Source: Eurostat.

Appendix VI: An overview of the data relevant for member state abatement

|                    | Base period emissions<br>Mt CO <sub>2</sub> | Observed annual GDP growth rate of 2002-2005 | Assumed annual rate of change of carbon intensity 2000-2004 | Implied annual rate of increase of CO <sub>2</sub> | Counterfactual 2005 BAU emissions<br>Mt CO <sub>2</sub> | Verified emissions 2005<br>Mt CO <sub>2</sub> | Difference BAU-2005 emissions<br>Mt CO <sub>2</sub> | Difference BAU-2005 emissions<br>% |
|--------------------|---|--|---|--|---|---|---|------------------------------------|
| <b>EU23</b>        | <b>2,078.0</b>                              | -  | -   | <b>1.1%</b>  | <b>2150.1</b>   | <b>2006.6</b>                                 | <b>-143.5</b>                                       | <b>-6.7%</b>                       |
| <b>EU15</b>        | <b>1676.6</b>                               | -  | -   | <b>1.0%</b>  | <b>1729.3</b>   | <b>1636.6</b>                                 | <b>-92.7</b>  | <b>-5.4%</b>                       |
| <b>EE8</b>         | <b>401.4</b>                                | -  | -   | <b>1.6%</b>  | <b>420.7</b>  | <b>370.0</b>                                  | <b>-50.8</b>  | <b>-12.1%</b>                      |
| <b>Austria</b>     | 30.2  | 1.9%   | +2.2%   | 4.0%   | 34.0  | 33.4  | -0.7  | -2.0%                              |
| <b>Belgium</b>     | 63.0  | 1.6%   | -0.9%   | 0.7%   | 64.4  | 55.4  | -9.0  | -14.0%                             |
| <b>Denmark</b>     | 30.9  | 2.0%   | -0.5%   | 1.4%   | 32.2  | 26.5  | -5.8  | -17.9%                             |
| <b>Finland</b>     | 36.2  | 2.8%   | +1.8%   | 4.6%   | 41.5  | 33.1  | -8.4  | -20.2%                             |
| <b>France</b>      | 141.1                                       | 1.5%   | -0.8%   | 0.6%   | 143.8   | 131.3   | -12.5   | -8.7%                              |
| <b>Germany</b>     | 501.0                                       | 0.6%   | -0.6%   | 0.1%   | 501.8   | 474.0   | -27.8   | -5.5%                              |
| <b>Greece</b>      | 70.1  | 4.6%   | -3.3%   | 1.2%   | 72.7  | 71.3  | -1.5  | -2.0%                              |
| <b>Ireland</b>     | 20.9  | 4.9%   | -4.7%   | 0.3%   | 21.1  | 22.4  | +1.3  | +6.3%                              |
| <b>Italy</b>       | 224.0                                       | 0.4%   | +0.5%   | 0.9%   | 229.9   | 225.3   | -4.6  | -2.0%                              |
| <b>Luxembourg</b>  | 2.9   | 3.6%   | +3.0%   | 6.5%   | 3.5   | 2.6   | -0.9  | -25.8%                             |
| <b>Netherlands</b> | 89.5  | 1.3%   | +0.6%   | 1.8%   | 94.5  | 80.4  | -14.2   | -15.0%                             |
| <b>Portugal</b>    | 36.6  | 0.1%   | +0.0%   | 0.2%   | 36.8  | 36.4  | -0.4  | -1.0%                              |
| <b>Spain</b>       | 164.1                                       | 3.3%   | +0.1%   | 3.3%   | 181.2   | 182.9   | +1.7  | +0.9%                              |
| <b>Sweden</b>      | 20.2  | 2.8%   | -1.3%   | 1.4%   | 21.1  | 19.3  | -1.8  | -8.5%                              |
| <b>UK</b>          | 245.9                                       | 2.7%   | -2.0%   | 0.7%   | 250.8   | 242.5   | -8.4  | -3.3%                              |
| <b>Cz Republic</b> | 89.0  | 4.8%   | -3.4%   | 1.4%   | 92.9  | 82.5  | -10.4   | -11.2%                             |
| <b>Estonia</b>     | 12.4  | 8.8%   | -4.4%   | 4.3%   | 14.1  | 12.6  | -1.5  | -10.5%                             |
| <b>Hungary</b>     | 32.0  | 4.4%   | -3.7%   | 0.7%   | 32.7  | 26.0  | -6.6  | -20.3%                             |
| <b>Latvia</b>      | 3.7   | 9.5%   | -6.0%   | 3.4%   | 4.1   | 2.9   | -1.2  | -30.3%                             |
| <b>Lithuania</b>   | 9.0   | 9.0%   | -9.2%   | -0.2%  | 8.9   | 6.6   | -2.3  | -26.2%                             |
| <b>Poland</b>      | 219.8                                       | 4.3%   | -2.9%   | 1.5%   | 229.6   | 205.4   | -24.2   | -10.5%                             |
| <b>Slovakia</b>    | 26.5  | 5.5%   | -2.4%   | 3.0%   | 29.0  | 25.2  | -3.8  | -13.0%                             |
| <b>Slovenia</b>    | 9.0   | 3.7%   | -2.4%   | 1.3%   | 9.4   | 8.7   | -0.6  | -6.8%                              |

Notes: Polish data assumed according to footnote 3. Base period data from DEHSt (2005); GDP growth rate based on own calculations of weighted GDP; carbon intensity figures derived from EEA data on CO<sub>2</sub>.

## NOTE DI LAVORO DELLA FONDAZIONE ENI ENRICO MATTEI

### Fondazione Eni Enrico Mattei Working Paper Series

Our Note di Lavoro are available on the Internet at the following addresses:

<http://www.feem.it/Feem/Pub/Publications/WPapers/default.html>

<http://www.ssrn.com/link/feem.html>

<http://www.repec.org>

<http://agecon.lib.umn.edu>

### NOTE DI LAVORO PUBLISHED IN 2006

|      |         |  |
|------|---------|--|
| SIEV | 1.2006  | <i>Anna ALBERINI</i> : <u>Determinants and Effects on Property Values of Participation in Voluntary Cleanup Programs: The Case of Colorado</u>   |
| CCMP | 2.2006  | <i>Valentina BOSETTI, Carlo CARRARO and Marzio GALEOTTI</i> : <u>Stabilisation Targets, Technical Change and the Macroeconomic Costs of Climate Change Control</u>   |
| CCMP | 3.2006  | <i>Roberto ROSON</i> : <u>Introducing Imperfect Competition in CGE Models: Technical Aspects and Implications</u>  |
| KTHC | 4.2006  | <i>Sergio VERGALLI</i> : <u>The Role of Community in Migration Dynamics</u>  |
| SIEV | 5.2006  | <i>Fabio GRAZI, Jeroen C.J.M. van den BERGH and Piet RIETVELD</i> : <u>Modeling Spatial Sustainability: Spatial Welfare Economics versus Ecological Footprint</u>  |
| CCMP | 6.2006  | <i>Olivier DESCHENES and Michael GREENSTONE</i> : <u>The Economic Impacts of Climate Change: Evidence from Agricultural Profits and Random Fluctuations in Weather</u>   |
| PRCG | 7.2006  | <i>Michele MORETTO and Paola VALBONESE</i> : <u>Firm Regulation and Profit-Sharing: A Real Option Approach</u>   |
| SIEV | 8.2006  | <i>Anna ALBERINI and Aline CHIABAI</i> : <u>Discount Rates in Risk v. Money and Money v. Money Tradeoffs</u>   |
| CTN  | 9.2006  | <i>Jon X. EGUIA</i> : <u>United We Vote</u>  |
| CTN  | 10.2006 | <i>Shao CHIN SUNG and Dinko DIMITRO</i> : <u>A Taxonomy of Myopic Stability Concepts for Hedonic Games</u>   |
| NRM  | 11.2006 | <i>Fabio CERINA</i> (lxxviii): <u>Tourism Specialization and Sustainability: A Long-Run Policy Analysis</u>  |
| NRM  | 12.2006 | <i>Valentina BOSETTI, Mariaester CASSINELLI and Alessandro LANZA</i> (lxxviii): <u>Benchmarking in Tourism Destination, Keeping in Mind the Sustainable Paradigm</u>   |
| CCMP | 13.2006 | <i>Jens HORBACH</i> : <u>Determinants of Environmental Innovation – New Evidence from German Panel Data Sources</u>  |
| KTHC | 14.2006 | <i>Fabio SABATINI</i> : <u>Social Capital, Public Spending and the Quality of Economic Development: The Case of Italy</u>  |
| KTHC | 15.2006 | <i>Fabio SABATINI</i> : <u>The Empirics of Social Capital and Economic Development: A Critical Perspective</u>   |
| CSRM | 16.2006 | <i>Giuseppe DI VITA</i> : <u>Corruption, Exogenous Changes in Incentives and Deterrence</u>  |
| CCMP | 17.2006 | <i>Rob B. DELLINK and Marjan W. HOFKES</i> : <u>The Timing of National Greenhouse Gas Emission Reductions in the Presence of Other Environmental Policies</u>  |
| IEM  | 18.2006 | <i>Philippe QUIRION</i> : <u>Distributional Impacts of Energy-Efficiency Certificates Vs. Taxes and Standards</u>  |
| CTN  | 19.2006 | <i>Somdeb LAHIRI</i> : <u>A Weak Bargaining Set for Contract Choice Problems</u>   |
| CCMP | 20.2006 | <i>Massimiliano MAZZANTI and Roberto ZOBOLI</i> : <u>Examining the Factors Influencing Environmental Innovations</u>   |
| SIEV | 21.2006 | <i>Y. Hossein FARZIN and Ken-ICHI AKAO</i> : <u>Non-pecuniary Work Incentive and Labor Supply</u>  |
| CCMP | 22.2006 | <i>Marzio GALEOTTI, Matteo MANERA and Alessandro LANZA</i> : <u>On the Robustness of Robustness Checks of the Environmental Kuznets Curve</u>  |
| NRM  | 23.2006 | <i>Y. Hossein FARZIN and Ken-ICHI AKAO</i> : <u>When is it Optimal to Exhaust a Resource in a Finite Time?</u>   |
| NRM  | 24.2006 | <i>Y. Hossein FARZIN and Ken-ICHI AKAO</i> : <u>Non-pecuniary Value of Employment and Natural Resource Extinction</u>  |
| SIEV | 25.2006 | <i>Lucia VERGANO and Paulo A.L.D. NUNES</i> : <u>Analysis and Evaluation of Ecosystem Resilience: An Economic Perspective</u>  |
| SIEV | 26.2006 | <i>Danny CAMPBELL, W. George HUTCHINSON and Riccardo SCARPA</i> : <u>Using Discrete Choice Experiments to Derive Individual-Specific WTP Estimates for Landscape Improvements under Agri-Environmental Schemes: Evidence from the Rural Environment Protection Scheme in Ireland</u> |
| KTHC | 27.2006 | <i>Vincent M. OTTO, Timo KUOSMANEN and Ekko C. van IERLAND</i> : <u>Estimating Feedback Effect in Technical Change: A Frontier Approach</u>  |
| CCMP | 28.2006 | <i>Giovanni BELLA</i> : <u>Uniqueness and Indeterminacy of Equilibria in a Model with Polluting Emissions</u>  |
| IEM  | 29.2006 | <i>Alessandro COLOGNI and Matteo MANERA</i> : <u>The Asymmetric Effects of Oil Shocks on Output Growth: A Markov-Switching Analysis for the G-7 Countries</u>  |
| KTHC | 30.2006 | <i>Fabio SABATINI</i> : <u>Social Capital and Labour Productivity in Italy</u>   |
| ETA  | 31.2006 | <i>Andrea GALLICE</i> (lxxix): <u>Predicting one Shot Play in 2x2 Games Using Beliefs Based on Minimax Regret</u>  |
| IEM  | 32.2006 | <i>Andrea BIGANO and Paul SHEEHAN</i> : <u>Assessing the Risk of Oil Spills in the Mediterranean: the Case of the Route from the Black Sea to Italy</u>  |
| NRM  | 33.2006 | <i>Rinaldo BRAU and Davide CAO</i> (lxxviii): <u>Uncovering the Macrostructure of Tourists' Preferences. A Choice Experiment Analysis of Tourism Demand to Sardinia</u>  |
| CTN  | 34.2006 | <i>Parkash CHANDER and Henry TULKENS</i> : <u>Cooperation, Stability and Self-Enforcement in International Environmental Agreements: A Conceptual Discussion</u>   |
| IEM  | 35.2006 | <i>Valeria COSTANTINI and Salvatore MONNI</i> : <u>Environment, Human Development and Economic Growth</u>  |
| ETA  | 36.2006 | <i>Ariel RUBINSTEIN</i> (lxxix): <u>Instinctive and Cognitive Reasoning: A Study of Response Times</u>   |

|      |         |   |
|------|---------|---|
| ETA  | 37.2006 | <i>Maria SALGADEO</i> (lxxx): <u>Choosing to Have Less Choice</u>   |
| ETA  | 38.2006 | <i>Justina A.V. FISCHER and Benno TORGLER</i> : <u>Does Envy Destroy Social Fundamentals? The Impact of Relative Income Position on Social Capital</u>                              |
| ETA  | 39.2006 | <i>Benno TORGLER, Sascha L. SCHMIDT and Bruno S. FREY</i> : <u>Relative Income Position and Performance: An Empirical Panel Analysis</u>  |
| CCMP | 40.2006 | <i>Alberto GAGO, Xavier LABANDEIRA, Fidel PICOS And Miguel RODRÍGUEZ</i> : <u>Taxing Tourism In Spain: Results and Recommendations</u>  |
| IEM  | 41.2006 | <i>Karl van BIERVLIET, Dirk Le ROY and Paulo A.L.D. NUNES</i> : <u>An Accidental Oil Spill Along the Belgian Coast: Results from a CV Study</u>                                     |
| CCMP | 42.2006 | <i>Rolf GOLOMBEK and Michael HOEL</i> : <u>Endogenous Technology and Tradable Emission Quotas</u>   |
| KTHC | 43.2006 | <i>Giulio CAINELLI and Donato IACOBUCCI</i> : <u>The Role of Agglomeration and Technology in Shaping Firm Strategy and Organization</u>   |
| CCMP | 44.2006 | <i>Alvaro CALZADILLA, Francesco PAULI and Roberto ROSON</i> : <u>Climate Change and Extreme Events: An Assessment of Economic Implications</u>                                      |
| SIEV | 45.2006 | <i>M.E. KRAGT, P.C. ROEBELING and A. RUIJS</i> : <u>Effects of Great Barrier Reef Degradation on Recreational Demand: A Contingent Behaviour Approach</u>                           |
| NRM  | 46.2006 | <i>C. GIUPPONI, R. CAMERA, A. FASSIO, A. LASUT, J. MYSLIAK and A. SGOBBI</i> : <u>Network Analysis, Creative System Modelling and DecisionSupport: The NetSyMoD Approach</u>        |
| KTHC | 47.2006 | <i>Walter F. LALICH</i> (lxxx): <u>Measurement and Spatial Effects of the Immigrant Created Cultural Diversity in Sydney</u>  |
| KTHC | 48.2006 | <i>Elena PASPALANOVA</i> (lxxx): <u>Cultural Diversity Determining the Memory of a Controversial Social Event</u>   |
| KTHC | 49.2006 | <i>Ugo GASPARINO, Barbara DEL CORPO and Dino PINELLI</i> (lxxx): <u>Perceived Diversity of Complex Environmental Systems: Multidimensional Measurement and Synthetic Indicators</u> |
| KTHC | 50.2006 | <i>Aleksandra HAUKE</i> (lxxx): <u>Impact of Cultural Differences on Knowledge Transfer in British, Hungarian and Polish Enterprises</u>  |
| KTHC | 51.2006 | <i>Katherine MARQUAND FORSYTH and Vanja M. K. STENIUS</i> (lxxx): <u>The Challenges of Data Comparison and Varied European Concepts of Diversity</u>                                |
| KTHC | 52.2006 | <i>Gianmarco I.P. OTTAVIANO and Giovanni PERI</i> (lxxx): <u>Rethinking the Gains from Immigration: Theory and Evidence from the U.S.</u>   |
| KTHC | 53.2006 | <i>Monica BARNI</i> (lxxx): <u>From Statistical to Geolinguistic Data: Mapping and Measuring Linguistic Diversity</u>   |
| KTHC | 54.2006 | <i>Lucia TAJOLI and Lucia DE BENEDICTIS</i> (lxxx): <u>Economic Integration and Similarity in Trade Structures</u>  |
| KTHC | 55.2006 | <i>Suzanna CHAN</i> (lxxx): <u>“God’s Little Acre” and “Belfast Chinatown”: Diversity and Ethnic Place Identity in Belfast</u>  |
| KTHC | 56.2006 | <i>Diana PETKOVA</i> (lxxx): <u>Cultural Diversity in People’s Attitudes and Perceptions</u>  |
| KTHC | 57.2006 | <i>John J. BETANCUR</i> (lxxx): <u>From Outsiders to On-Paper Equals to Cultural Curiosities? The Trajectory of Diversity in the USA</u>  |
| KTHC | 58.2006 | <i>Kiflemariam HAMDE</i> (lxxx): <u>Cultural Diversity A Glimpse Over the Current Debate in Sweden</u>  |
| KTHC | 59.2006 | <i>Emilio GREGORI</i> (lxxx): <u>Indicators of Migrants’ Socio-Professional Integration</u>   |
| KTHC | 60.2006 | <i>Christa-Maria LERM HAYES</i> (lxxx): <u>Unity in Diversity Through Art? Joseph Beuys’ Models of Cultural Dialogue</u>  |
| KTHC | 61.2006 | <i>Sara VERTOMMEN and Albert MARTENS</i> (lxxx): <u>Ethnic Minorities Rewarded: Ethnostratification on the Wage Market in Belgium</u>   |
| KTHC | 62.2006 | <i>Nicola GENOVESE and Maria Grazia LA SPADA</i> (lxxx): <u>Diversity and Pluralism: An Economist's View</u>  |
| KTHC | 63.2006 | <i>Carla BAGNA</i> (lxxx): <u>Italian Schools and New Linguistic Minorities: Nationality Vs. Plurilingualism. Which Ways and Methodologies for Mapping these Contexts?</u>          |
| KTHC | 64.2006 | <i>Vedran OMANOVIĆ</i> (lxxx): <u>Understanding “Diversity in Organizations” Paradigmatically and Methodologically</u>  |
| KTHC | 65.2006 | <i>Mila PASPALANOVA</i> (lxxx): <u>Identifying and Assessing the Development of Populations of Undocumented Migrants: The Case of Undocumented Poles and Bulgarians in Brussels</u> |
| KTHC | 66.2006 | <i>Roberto ALZETTA</i> (lxxx): <u>Diversities in Diversity: Exploring Moroccan Migrants’ Livelihood in Genoa</u>  |
| KTHC | 67.2006 | <i>Monika SEDENKOVA and Jiri HORAK</i> (lxxx): <u>Multivariate and Multicriteria Evaluation of Labour Market Situation</u>  |
| KTHC | 68.2006 | <i>Dirk JACOBS and Andrea REA</i> (lxxx): <u>Construction and Import of Ethnic Categorisations: “Allochthones” in The Netherlands and Belgium</u>                                   |
| KTHC | 69.2006 | <i>Eric M. USLANER</i> (lxxx): <u>Does Diversity Drive Down Trust?</u>  |
| KTHC | 70.2006 | <i>Paula MOTA SANTOS and João BORGES DE SOUSA</i> (lxxx): <u>Visibility &amp; Invisibility of Communities in Urban Systems</u>  |
| ETA  | 71.2006 | <i>Rinaldo BRAU and Matteo LIPPI BRUNI</i> : <u>Eliciting the Demand for Long Term Care Coverage: A Discrete Choice Modelling Analysis</u>  |
| CTN  | 72.2006 | <i>Dinko DIMITROV and Claus-JOCHEN HAAKE</i> : <u>Coalition Formation in Simple Games: The Semistrict Core</u>  |
| CTN  | 73.2006 | <i>Ottorino CHILLEM, Benedetto GUI and Lorenzo ROCCO</i> : <u>On The Economic Value of Repeated Interactions Under Adverse Selection</u>  |
| CTN  | 74.2006 | <i>Sylvain BEAL and Nicolas QUÉROU</i> : <u>Bounded Rationality and Repeated Network Formation</u>  |
| CTN  | 75.2006 | <i>Sophie BADE, Guillaume HAERINGER and Ludovic RENO</i> : <u>Bilateral Commitment</u>  |
| CTN  | 76.2006 | <i>Andranik TANGIAN</i> : <u>Evaluation of Parties and Coalitions After Parliamentary Elections</u>   |
| CTN  | 77.2006 | <i>Rudolf BERGHAMMER, Agnieszka RUSINOWSKA and Harrie de SWART</i> : <u>Applications of Relations and Graphs to Coalition Formation</u>   |
| CTN  | 78.2006 | <i>Paolo PIN</i> : <u>Eight Degrees of Separation</u>   |
| CTN  | 79.2006 | <i>Roland AMANN and Thomas GALL</i> : <u>How (not) to Choose Peers in Studying Groups</u>   |

|      |          |  |
|------|----------|--|
| CTN  | 80.2006  | <i>Maria MONTERO</i> : <u>Inequity Aversion May Increase Inequity</u>  |
| CCMP | 81.2006  | <i>Vincent M. OTTO, Andreas LÖSCHEL and John REILLY</i> : <u>Directed Technical Change and Climate Policy</u>  |
| CSRM | 82.2006  | <i>Nicoletta FERRO</i> : <u>Riding the Waves of Reforms in Corporate Law, an Overview of Recent Improvements in Italian Corporate Codes of Conduct</u>   |
| CTN  | 83.2006  | <i>Siddhartha BANDYOPADHYAY and Mandar OAK</i> : <u>Coalition Governments in a Model of Parliamentary Democracy</u>  |
| PRCG | 84.2006  | <i>Raphaël SOUBEYRAN</i> : <u>Valence Advantages and Public Goods Consumption: Does a Disadvantaged Candidate Choose an Extremist Position?</u>  |
| CCMP | 85.2006  | <i>Eduardo L. GIMÉNEZ and Miguel RODRÍGUEZ</i> : <u>Pigou's Dividend versus Ramsey's Dividend in the Double Dividend Literature</u>  |
| CCMP | 86.2006  | <i>Andrea BIGANO, Jacqueline M. HAMILTON and Richard S.J. TOL</i> : <u>The Impact of Climate Change on Domestic and International Tourism: A Simulation Study</u>  |
| KTHC | 87.2006  | <i>Fabio SABATINI</i> : <u>Educational Qualification, Work Status and Entrepreneurship in Italy an Exploratory Analysis</u>  |
| CCMP | 88.2006  | <i>Richard S.J. TOL</i> : <u>The Polluter Pays Principle and Cost-Benefit Analysis of Climate Change: An Application of Fund</u>   |
| CCMP | 89.2006  | <i>Philippe TULKENS and Henry TULKENS</i> : <u>The White House and The Kyoto Protocol: Double Standards on Uncertainties and Their Consequences</u>  |
| SIEV | 90.2006  | <i>Andrea M. LEITER and Gerald J. PRUCKNER</i> : <u>Proportionality of Willingness to Pay to Small Risk Changes – The Impact of Attitudinal Factors in Scope Tests</u>   |
| PRCG | 91.2006  | <i>Raphaël SOUBEYRAN</i> : <u>When Inertia Generates Political Cycles</u>  |
| CCMP | 92.2006  | <i>Alireza NAGHAVI</i> : <u>Can R&amp;D-Inducing Green Tariffs Replace International Environmental Regulations?</u>  |
| CCMP | 93.2006  | <i>Xavier PAUTREL</i> : <u>Reconsidering The Impact of Environment on Long-Run Growth When Pollution Influences Health and Agents Have Finite-Lifetime</u>   |
| CCMP | 94.2006  | <i>Corrado Di MARIA and Edwin van der WERF</i> : <u>Carbon Leakage Revisited: Unilateral Climate Policy with Directed Technical Change</u>   |
| CCMP | 95.2006  | <i>Paulo A.L.D. NUNES and Chiara M. TRAVISI</i> : <u>Comparing Tax and Tax Reallocations Payments in Financing Rail Noise Abatement Programs: Results from a CE valuation study in Italy</u>                           |
| CCMP | 96.2006  | <i>Timo KUOSMANEN and Mika KORTELAINEN</i> : <u>Valuing Environmental Factors in Cost-Benefit Analysis Using Data Envelopment Analysis</u>   |
| KTHC | 97.2006  | <i>Dermot LEAHY and Alireza NAGHAVI</i> : <u>Intellectual Property Rights and Entry into a Foreign Market: FDI vs. Joint Ventures</u>  |
| CCMP | 98.2006  | <i>Inmaculada MARTÍNEZ-ZARZOSO, Aurelia BENGOCHEA-MORANCHO and Rafael MORALES LAGE</i> : <u>The Impact of Population on CO2 Emissions: Evidence from European Countries</u>  |
| PRCG | 99.2006  | <i>Alberto CAVALIERE and Simona SCABROSETTI</i> : <u>Privatization and Efficiency: From Principals and Agents to Political Economy</u>   |
| NRM  | 100.2006 | <i>Khaled ABU-ZEID and Sameh AFIFI</i> : <u>Multi-Sectoral Uses of Water &amp; Approaches to DSS in Water Management in the NOSTRUM Partner Countries of the Mediterranean</u>   |
| NRM  | 101.2006 | <i>Carlo GIUPPONI, Jaroslav MYSLAK and Jacopo CRIMI</i> : <u>Participatory Approach in Decision Making Processes for Water Resources Management in the Mediterranean Basin</u>   |
| CCMP | 102.2006 | <i>Kerstin RONNEBERGER, Maria BERRITTELLA, Francesco BOSELLO and Richard S.J. TOL</i> : <u>Klum@Gtap: Introducing Biophysical Aspects of Land-Use Decisions Into a General Equilibrium Model A Coupling Experiment</u> |
| KTHC | 103.2006 | <i>Avner BEN-NER, Brian P. McCALL, Massoud STEPHANE, and Hua WANG</i> : <u>Identity and Self-Other Differentiation in Work and Giving Behaviors: Experimental Evidence</u>   |
| SIEV | 104.2006 | <i>Aline CHIABAI and Paulo A.L.D. NUNES</i> : <u>Economic Valuation of Oceanographic Forecasting Services: A Cost-Benefit Exercise</u>   |
| NRM  | 105.2006 | <i>Paola MINOIA and Anna BRUSAROSCO</i> : <u>Water Infrastructures Facing Sustainable Development Challenges: Integrated Evaluation of Impacts of Dams on Regional Development in Morocco</u>                          |
| PRCG | 106.2006 | <i>Carmine GUERRIERO</i> : <u>Endogenous Price Mechanisms, Capture and Accountability Rules: Theory and Evidence</u>   |
| CCMP | 107.2006 | <i>Richard S.J. TOL, Stephen W. PACALA and Robert SOCOLOW</i> : <u>Understanding Long-Term Energy Use and Carbon Dioxide Emissions in the Usa</u>  |
| NRM  | 108.2006 | <i>Carles MANERA and Jaume GARAU TABERNER</i> : <u>The Recent Evolution and Impact of Tourism in the Mediterranean: The Case of Island Regions, 1990-2002</u>  |
| PRCG | 109.2006 | <i>Carmine GUERRIERO</i> : <u>Dependent Controllers and Regulation Policies: Theory and Evidence</u>   |
| KTHC | 110.2006 | <i>John FOOT (lxxx)</i> : <u>Mapping Diversity in Milan. Historical Approaches to Urban Immigration</u>  |
| KTHC | 111.2006 | <i>Donatella CALABI</i> : <u>Foreigners and the City: An Historiographical Exploration for the Early Modern Period</u>   |
| IEM  | 112.2006 | <i>Andrea BIGANO, Francesco BOSELLO and Giuseppe MARANO</i> : <u>Energy Demand and Temperature: A Dynamic Panel Analysis</u>   |
| SIEV | 113.2006 | <i>Anna ALBERINI, Stefania TONIN, Margherita TURVANI and Aline CHIABAI</i> : <u>Paying for Permanence: Public Preferences for Contaminated Site Cleanup</u>  |
| CCMP | 114.2006 | <i>Vivekananda MUKHERJEE and Dirk T.G. RÜBBELKE</i> : <u>Global Climate Change, Technology Transfer and Trade with Complete Specialization</u>   |
| NRM  | 115.2006 | <i>Clive LIPCHIN</i> : <u>A Future for the Dead Sea Basin: Water Culture among Israelis, Palestinians and Jordanians</u>   |
| CCMP | 116.2006 | <i>Barbara BUCHNER, Carlo CARRARO and A. Denny ELLERMAN</i> : <u>The Allocation of European Union Allowances: Lessons, Unifying Themes and General Principles</u>  |
| CCMP | 117.2006 | <i>Richard S.J. TOL</i> : <u>Carbon Dioxide Emission Scenarios for the Usa</u>   |



|      |          |   |
|------|----------|---|
| NRM  | 118.2006 | <i>Isabel CORTÉS-JIMÉNEZ and Manuela PULINA: <u>A further step into the ELGH and TLGH for Spain and Italy</u></i>   |
| SIEV | 119.2006 | <i>Beat HINTERMANN, Anna ALBERINI and Anil MARKANDYA: <u>Estimating the Value of Safety with Labor Market Data: Are the Results Trustworthy?</u></i>  |
| SIEV | 120.2006 | <i>Elena STRUKOVA, Alexander GOLUB and Anil MARKANDYA: <u>Air Pollution Costs in Ukraine</u></i>  |
| CCMP | 121.2006 | <i>Massimiliano MAZZANTI, Antonio MUSOLESI and Roberto ZOBOLI: <u>A Bayesian Approach to the Estimation of Environmental Kuznets Curves for CO<sub>2</sub> Emissions</u></i>                                  |
| ETA  | 122.2006 | <i>Jean-Marie GREThER, Nicole A. MATHYS, and Jaime DE MELO: <u>Unraveling the World-Wide Pollution Haven Effect</u></i>   |
| KTHC | 123.2006 | <i>Sergio VERGALLI: <u>Entry and Exit Strategies in Migration Dynamics</u></i>  |
| PRCG | 124.2006 | <i>Bernardo BORTOLOTTI and Valentina MILELLA: <u>Privatization in Western Europe Stylized Facts, Outcomes and Open Issues</u></i>   |
| SIEV | 125.2006 | <i>Pietro CARATTI, Ludovico FERRAGUTO and Chiara RIBOLDI: <u>Sustainable Development Data Availability on the Internet</u></i>  |
| SIEV | 126.2006 | <i>S. SILVESTRI, M PELLIZZATO and V. BOATTO: <u>Fishing Across the Centuries: What Prospects for the Venice Lagoon?</u></i>   |
| CTN  | 127.2006 | <i>Alison WATTS: <u>Formation of Segregated and Integrated Groups</u></i>   |
| SIEV | 128.2006 | <i>Danny CAMPBELL, W. George HUTCHINSON and Riccardo SCARPA: <u>Lexicographic Preferences in Discrete Choice Experiments: Consequences on Individual-Specific Willingness to Pay Estimates</u></i>            |
| CCMP | 129.2006 | <i>Giovanni BELLA: <u>Transitional Dynamics Towards Sustainability: Reconsidering the EKC Hypothesis</u></i>  |
| IEM  | 130.2006 | <i>Elisa SCARPA and Matteo MANERA: <u>Pricing and Hedging Illiquid Energy Derivatives: an Application to the JCC Index</u></i>  |
| PRCG | 131.2006 | <i>Andrea BELTRATTI and Bernardo BORTOLOTTI: <u>The Nontradable Share Reform in the Chinese Stock Market</u></i>  |
| IEM  | 132.2006 | <i>Alberto LONGO, Anil MARKANDYA and Marta PETRUCCI: <u>The Internalization of Externalities in The Production of Electricity: Willingness to Pay for the Attributes of a Policy for Renewable Energy</u></i> |
| ETA  | 133.2006 | <i>Brighta BERCEA and Sonia OREFFICE: <u>Quality of Available Mates, Education and Intra-Household Bargaining Power</u></i>   |
| KTHC | 134.2006 | <i>Antonia R. GURRIERI and Luca PETRUZZELLIS: <u>Local Networks to Compete in the Global Era. The Italian SMEs Experience</u></i>   |
| CCMP | 135.2006 | <i>Andrea BIGANO, Francesco BOSELLO, Roberto ROSON and Richard S.J. TOL: <u>Economy-Wide Estimates of the Implications of Climate Change: A Joint Analysis for Sea Level Rise and Tourism</u></i>             |
| CCMP | 136.2006 | <i>Richard S.J. TOL: <u>Why Worry About Climate Change? A Research Agenda</u></i>   |
| SIEV | 137.2006 | <i>Anna ALBERINI, Alberto LONGO and Patrizia RIGANTI: <u>Using Surveys to Compare the Public's and Decisionmakers' Preferences for Urban Regeneration: The Venice Arsenale</u></i>                            |
| ETA  | 138.2006 | <i>Y. Hossein FARZIN and Ken-Ichi AKAO: <u>Environmental Quality in a Differentiated Duopoly</u></i>  |
| CCMP | 139.2006 | <i>Denny ELLERMAN and Barbara BUCHNER: <u>Over-Allocation or Abatement? A Preliminary Analysis of the Eu Ets Based on the 2005 Emissions Data</u></i>   |

(lxxviii) This paper was presented at the Second International Conference on "Tourism and Sustainable Economic Development - Macro and Micro Economic Issues" jointly organised by CRENoS (Università di Cagliari and Sassari, Italy) and Fondazione Eni Enrico Mattei, Italy, and supported by the World Bank, Chia, Italy, 16-17 September 2005.

(lxxix) This paper was presented at the International Workshop on "Economic Theory and Experimental Economics" jointly organised by SET (Center for advanced Studies in Economic Theory, University of Milano-Bicocca) and Fondazione Eni Enrico Mattei, Italy, Milan, 20-23 November 2005. The Workshop was co-sponsored by CISEPS (Center for Interdisciplinary Studies in Economics and Social Sciences, University of Milano-Bicocca).

(lxxx) This paper was presented at the First EURODIV Conference "Understanding diversity: Mapping and measuring", held in Milan on 26-27 January 2006 and supported by the Marie Curie Series of Conferences "Cultural Diversity in Europe: a Series of Conferences.

#### 2006 SERIES

|              |  |
|--------------|--|
| <b>CCMP</b>  | <i>Climate Change Modelling and Policy</i> (Editor: Marzio Galeotti)                       |
| <b>SIEV</b>  | <i>Sustainability Indicators and Environmental Valuation</i> (Editor: Anna Alberini)       |
| <b>NRM</b>   | <i>Natural Resources Management</i> (Editor: Carlo Giupponi)                               |
| <b>KTHC</b>  | <i>Knowledge, Technology, Human Capital</i> (Editor: Gianmarco Ottaviano)                  |
| <b>IEM</b>   | <i>International Energy Markets</i> (Editor: Matteo Manera)                                |
| <b>CSRSM</b> | <i>Corporate Social Responsibility and Sustainable Management</i> (Editor: Giulio Sapelli) |
| <b>PRCG</b>  | <i>Privatisation Regulation Corporate Governance</i> (Editor: Bernardo Bortolotti)         |
| <b>ETA</b>   | <i>Economic Theory and Applications</i> (Editor: Carlo Carraro)                            |
| <b>CTN</b>   | <i>Coalition Theory Network</i>  |