

**Evaluating Projects and Assessing  
Sustainable Development in  
Imperfect Economies**

Kenneth Arrow, Partha Dasgupta  
and Karl-Göran Mäler

NOTA DI LAVORO 109.2003

**DECEMBER 2003**

SIEV – Sustainability Indicators and Environmental Valuation
---

Kenneth Arrow, *Research Initiative on the Environment, the Economy, and Sustainable  
Welfare, Stanford University, Stanford*

Partha Dasgupta, *Faculty of Economics of Cambridge and St. John's College,  
Cambridge*

Karl-Göran Mäler, *Beijer International Institute of Ecological Economics, Stockholm*

This paper can be downloaded without charge at:

The Fondazione Eni Enrico Mattei Note di Lavoro Series Index:

[http://www.feem.it/web/attiv/\\_wp.html](http://www.feem.it/web/attiv/_wp.html)

Social Science Research Network Electronic Paper Collection:

[http://papers.ssrn.com/abstract\\_id=XXXXXX](http://papers.ssrn.com/abstract_id=XXXXXX)

The opinions expressed in this paper do not necessarily reflect the position of  
Fondazione Eni Enrico Mattei

# Evaluating Projects and Assessing Sustainable Development in Imperfect Economies

## Summary

We are interested in three related questions: (1) How should accounting prices be estimated? (2) How should we evaluate policy change in an imperfect economy? (3) How can we check whether intergenerational well-being will be sustained along a projected economic programme? We do not presume that the economy is convex, nor do we assume that the government optimizes on behalf of its citizens. We show that the same set of accounting prices should be used both for policy evaluation and for assessing whether or not intergenerational welfare along a given economic path will be sustained. We also show that a comprehensive measure of wealth, computed in terms of the accounting prices, can be used as an index for problems (2) and (3) above. The remainder of the paper is concerned with rules for estimating the accounting prices of several specific environmental natural resources, transacted in a few well known economic institutions.

**JEL:** D6, D9, E2, O2, O4, Q2, Q3

*This paper has been presented at the "International Conference on Theoretical Topics in Ecological Economics", Trieste, Italy, February 10-12, 2003, a joint initiative of the Abdus Salam International Centre for Theoretical Physics - ICTP, the Beijer International Institute of Ecological Economics, and Fondazione Eni Enrico Mattei – FEEM.*

*Research support (for KJA) was provided by the William and Flora Hewlett Foundation. Preliminary results of our research were presented at a Workshop on "Putting Theory to Work: The Measurement of Genuine Wealth", held at the Stanford Institute for Economic Policy Research during 25-26 April 2002. Earlier drafts of the article were prepared when the authors visited the Abdus Salam International Centre for Theoretical Physics, Trieste, in May 2002 and the first two authors visited the Beijer International Institute of Ecological Economics, Stockholm, in August 2002. We are most grateful to Geir Asheim and Matteo Marsili for many helpful discussions and for correcting two errors in an earlier draft and to a referee for comments. This article is forthcoming in a special issue on the Economics of Non-Convex Ecological Systems in Environmental and Resource Economics, Autumn 2003.*

*Address for correspondence:*

Karl-Göran Mäler  
The Beijer Institute  
The International Institute of Ecological Economics  
The Royal Swedish Academy of Sciences  
Kungl. Vetenskapsakademien  
Lilla Frecativagen 4  
Stockholm  
Sweden  
E-mail: karl@beijer.kva.se

## Contents

- 1 Introduction
2. The Basic Model
  - 2.1 Preliminaries
  - 2.2 Marginal Rates of Substitution vs Market Observables
  - 2.3 Genuine Investment as a Measure of Sustainable Development
  - 2.4 What Else Does Genuine Investment Measure?
  - 2.5 Project Evaluation Criteria
  - 2.6 Numeraire
  - 2.7 Intragenerational Distribution
- 3 Illustration, 1: a convex production economy
- 4 Illustration, 2: a non-convex ecosystem
  - 4.1 Constant Phosphorus Inflow
  - 4.2 Optimum Phosphorus Inflow
- 5 Exhaustible Resources: the closed economy
  - 5.1 The Optimum Regime
  - 5.2 Restricted Entry
  - 5.3 Open Access
- 6 Exploration and Discoveries
- 7 Forests and Trees
- 8 Human Capital
- 9 Global Public Goods
- 10 Exogenous Productivity Growth
  - 10.1 Labour Augmenting Technical Progress
  - 10.2 Resource Augmenting Technical Progress
- 11 Exhaustible Resources: the exporting economy
- 12 Defensive Expenditure
- 13 Population Change and Sustainable Development
- 14 Uncertain Productivity
- 15 Concluding Remarks
- References

## 1 Introduction

In several recent publications, it has been shown that there is a wealth like measure that can serve as an index of intergenerational welfare. The index enables one (a) to check whether welfare will be sustained along an economic forecast, and (b) to conduct social cost-benefit analysis of policy reforms (e.g., investment projects). Excepting under special circumstances, however, the index in question is not wealth itself, but an adaptation of wealth. Interestingly, the results do not require the economy to be convex, nor do they require the assumption that the government optimizes on behalf of its citizens.<sup>1</sup>

An economy's wealth is the worth of its capital assets. As is widely recognised today, the list of assets should include not only manufactured capital, but also human capital (health, knowledge, and skills), and natural capital. Formally, an economy's wealth is a linear combination of its capital stocks, the weights awarded to the stocks being the latter's accounting prices.

The term accounting prices was used originally in the literature on economic planning (Tinbergen, 1954). The underlying presumption there was that governments are intent on maximizing social welfare. Public investment criteria were subsequently developed for economies enjoying good governance (Little and Mirrlees, 1968, 1974; Arrow and Kurz, 1970). In its turn the now-extensive literature exploring various concepts of sustainable development has also been directed at societies where governments choose policies so as to maximize intergenerational welfare.<sup>2</sup>

Sustainability is different from optimality. To ask whether collective well-being is sustained along an economic forecast is to ask, roughly speaking, whether the economy's production possibility set is growing. The concept of sustainability is useful for judging the performance of economies where the government, whether by design or incompetence, does not choose policies that maximise intergenerational welfare. One can argue, therefore, that the term "sustainable development" acquires particular bite when it is put to work in *imperfect economies*, that is, economies suffering from weak, or even bad, governance. Recently the theory of intertemporal welfare indices has been extended to such economies.<sup>3</sup> The theory's reach therefore now extends to actual economies. The theory has also been put to use in a valuable paper by Hamilton and Clemens (1999) for judging whether in the recent past countries have invested sufficiently to expand their productive bases.<sup>4</sup> Among the resources making up natural capital, only commercial

---

<sup>1</sup> Dasgupta and Mäler (2000), Dasgupta (2001a,b), and Section 2 below.

<sup>2</sup> For references to the technical literature on sustainable development, see Pezzey and Toman (2002).

<sup>3</sup> Dasgupta and Mäler (2000), Dasgupta (2001a,b), and Section 2 below.

<sup>4</sup> Serageldin (1995) and Pearce, Hamilton, and Atkinson (1996) were early explorations of the practicalities of estimating a nation's comprehensive wealth.

forests, oil and minerals, and the atmosphere as a sink for carbon dioxide were included in the Hamilton-Clemens work. Not included were water resources, forests as agents of carbon sequestration, fisheries, air and water pollutants, soil, and biodiversity. Nor were discoveries of oil and mineral reserves taken into account. Moreover, there is a certain awkwardness in several of the steps Hamilton and Clemens took when estimating changes in the worth of an economy's capital assets. Our aim in this paper is to clarify a number of issues that arise in putting the theory of welfare indices to practical use. It is our hope that the findings documented here will prove useful in future empirical work.

We are interested in three related questions: (1) How should accounting prices be estimated? (2) How should we evaluate policy change in an imperfect economy? (3) How can we check whether intergenerational well-being will be sustained along a projected economic programme?

For simplicity, we confine our analysis until Section 14 to a deterministic world. In Section 2 we rehearse the basic theory.<sup>5</sup> We prove that the same set of accounting prices should be used both for policy evaluation and for assessing whether or not intergenerational welfare along a given economic path will be sustained. We also show that a comprehensive measure of wealth, computed in terms of the accounting prices, can be used as an index for problems (2) and (3) above. These results do not require that the economy be convex, nor do they depend on the assumption that the government optimizes on behalf of its citizens subject to constraints.

In Section 3 we use the Ramsey-Solow model of national saving in a convex economy to illustrate the theory. In Section 4 we show that the theory can be put to use in non-convex economies by studying a particular class of ecosystems, namely, shallow lakes. The remainder of the paper is concerned with rules for estimating the accounting prices of specific environmental natural resources, transacted in a few well known economic institutions.

In order to make our findings easily accessible for empirical work, we report our findings as a catalogue of results. Rules for estimating accounting prices of exhaustible natural resources under both free and restricted entry are derived in Section 5. In Section 6 we show how expenditure toward the discovery of new deposits ought to be incorporated in national accounts. Section 7 develops methods for including forest depletion; and in Section 8 we show how the production of human capital could be taken into account. In Section 9 we study the valuation of global public goods.

If an economy were to face exogenous movements in certain variables, its dynamics would not be autonomous in time. Non-autonomy in time introduces additional problems for the construction of the required welfare index, in that the wealth measure requires to be augmented. Exogenous growth in factor productivities, for example, is a potential reason for non-autonomous dynamics. In Section 10 we show that by suitably redefining variables, it is often possible to

---

<sup>5</sup> The material in Section 2 has been taken from Dasgupta and Mäler (2000) and Dasgupta (2001a,b).

transform a non-autonomous economic system into one that is autonomous. But such helpful transformations are not available in many other cases. In Section 11 we show that the required welfare index can nevertheless be constructed, by studying a small country exporting an exhaustible natural resource at a price that is time-dependent. The way defensive expenditure against pollution ought to be included in national accounts is discussed in Section 12.

The theory developed upto and including Section 12 assumes that population remains constant. In Section 13 we extend the theory to cover population change.<sup>6</sup> In Section 14 we show how future uncertainty in commodity transformation possibilities can be incorporated. Section 15 contains concluding remarks.

## 2. The Basic Model

### 2.1 Preliminaries

We assume that the economy is closed. Time is continuous and is denoted variously by  $\tau$  and  $t$  ( $\tau, t \geq 0$ ). The horizon is taken to be infinite. For simplicity of exposition, we aggregate consumption into a single consumption good,  $C$ , and let  $\mathbf{R}$  denote a vector of resource flows (e.g., rates of extraction of natural resources, expenditure on education and health). Labour is supplied inelastically and is normalised to be unity. Intergenerational welfare (henceforth, "social welfare") at  $t$  ( $\geq 0$ ) is taken to be of the Ramsey-Koopmans form,

$$W_t = \int_t^\infty U(C_\tau) \exp(-\delta(\tau-t)) d\tau, \quad (\delta > 0), \quad (1)$$

where the utility function,  $U(C)$ , is strictly concave and monotonically increasing.

The state of the economy is represented by the vector  $\mathbf{K}$ , where  $\mathbf{K}$  is a comprehensive list of capital assets. The economy under study faces not only technological and ecological constraints, but also a wide variety of institutional constraints. By the economy's "institutions" we mean market structures, property rights, tax rates, non-market arrangements for credit, insurance, and common property resources, the character of various levels of government, and so forth. We do *not* assume that the government is necessarily bent on maximizing social welfare subject to constraints. It could be that the government is predatory, or is at best neglectful, and has objectives of its own that are not congruent with social welfare. Nor do we imagine institutions to be unchanging over time. What we do assume is that institutions coevolve with the state of the economy ( $\mathbf{K}$ ) in ways that are understood. It is no doubt a truism that social and political institutions influence the evolution of the state of an economy, but it has also been argued by political scientists (Lipset, 1959) that the state of an economy ( $\mathbf{K}$ ) influences the evolution of social and political institutions. The theory we develop below accommodates this mutual influence.

Let  $\{C_\tau, \mathbf{R}_\tau, \mathbf{K}_\tau\}_t^\infty$  be an economic programme from  $t$  to  $\infty$ . Given technological possibilities, resource availabilities, and the dynamics of the ecological-economic system, the decisions made by individual agents and consecutive governments from  $t$  onwards will determine

---

<sup>6</sup> In a companion paper (Arrow, Dasgupta, and Mäler, 2003) we have developed criteria for identifying sustainable development under changing population size in optimizing economies.

$C_\tau$ ,  $R_\tau$ , and  $K_\tau$  - for  $\tau \geq t$  - as functions of  $K_t$ ,  $\tau$ , and  $t$ . Thus let  $f(K_t, \tau, t)$ ,  $g(K_t, \tau, t)$ , and  $h(K_t, \tau, t)$ , respectively, be consumption, the vector of resource flows, and the vector of capital assets at date  $\tau (\geq t)$  if  $K_t$  is the vector of capital assets at  $t$ . Now write

$$(\xi_\tau)_t^\infty \equiv \{C_\tau, R_\tau, K_\tau\}_t^\infty, \text{ for } t \geq 0. \quad (2)$$

Let  $\{t, K_t\}$  denote the set of possible  $t$  and  $K_t$  pairs, and  $\{(\xi_\tau)_t^\infty\}$  the set of economic programmes from  $t$  to infinity.

**Definition 1** A *resource allocation mechanism*,  $\alpha$ , is a (many-one) mapping

$$\alpha: \{t, K_t\} \rightarrow \{(\xi_\tau)_t^\infty\}. \quad (3)$$

It bears emphasis that we do *not* assume that  $\alpha$  maps  $\{t, K_t\}$  into to optimum economic programmes (starting at  $t$ ), nor even that it maps  $\{t, K_t\}$  into efficient programmes (starting at  $t$ ). The following analysis is valid even if  $\alpha$  is riddled with economic distortions and inequities. Nor do we assume, in defining  $\alpha$ , that the economy's institutions are fixed. If institutions and the state of the economy were known to coevolve, that coevolution would be reflected in  $\alpha$ . Note too that we do *not* assume commodity transformation possibility sets to be convex. This is significant, because ecological processes involve transformation possibility sets that are frequently non-convex; displaying, for example, threshold effects. The reason we are able to accommodate non-convex production structures is that we are developing welfare economics in imperfect economies: we assume that the government (rather, some honest agency in government) seeks only to institute policy reform. For an optimizing government the matter would be different. As the Second Fundamental Theorem of Welfare Economics makes clear, production structures need to be convex if the optimum allocation is to be decentralized.

**Definition 2**  $\alpha$  is *time-autonomous* (henceforth *autonomous*) if for all  $\tau \geq t$ ,  $\xi_\tau$  is a function solely of  $K_t$  and  $(\tau-t)$ .

Notice that if  $\alpha$  is autonomous, economic variables at date  $\tau (\geq t)$  are functions of  $K_t$  and  $(\tau-t)$  only.  $\alpha$  would be non-autonomous if, for example, knowledge or the terms of trade (for a trading economy) were to change exogenously over time. In certain cases exogenous changes in population size would mean that  $\alpha$  is not autonomous. However, by suitably redefining state variables, non-autonomous resource allocation mechanisms can sometimes be mapped into autonomous mechanisms (Sections 10 and 13).

**Definition 3**  $\alpha$  is *time-consistent* if

$$h(K_\tau, \tau'', \tau') = h(K_t, \tau'', t), \text{ for all } \tau'', \tau', \text{ and } t. \quad (4)$$

Time-consistency implies a weak form of rationality. An autonomous resource allocation mechanism, however, has little to do with rationality; it has to do with the influence of external factors (e.g., whether trade prices are changing autonomously). In what follows, we assume that  $\alpha$  is time-consistent.

**Definition 4** The *value function* reflects social welfare (equation (1)) as a function of initial capital stocks and the resource allocation mechanism. We write this as

$$W_t = V(\mathbf{K}_p, \alpha, t). \quad (5)$$

In what follows, we will often write  $V(\mathbf{K}_p, \alpha, t) = V_t$ .

Let  $K_i$  be the  $i$ th capital stock. We assume that  $V$  is differentiable in  $\mathbf{K}$ .<sup>7</sup>

**Definition 5** The *accounting price*,  $p_{it}$ , of the  $i$ th capital stock is defined as

$$p_{it} = \partial \mathcal{V}(\mathbf{K}_p, \alpha, t) / \partial K_{it} \equiv \partial V_t / \partial K_{it}. \quad (6)$$

Note that accounting prices are defined in terms of hypothetical perturbations to an economic forecast. Specifically, the accounting price of a capital asset is the present discounted value of the perturbations to  $U$  that would arise from a marginal increase in the quantity of the asset. Given the resource allocation mechanism, accounting prices at  $t$  are functions of  $\mathbf{K}_p$ , and possibly of  $t$  as well (i.e.,  $p_{it} = p_i(\mathbf{K}_p, t)$ ). The prices depend also on the extent to which various capital assets are substitutable for one another. It should be noted that accounting prices of private "goods" can be negative if property rights are dysfunctional, such as those that lead to the tragedy of the commons. Note too that if  $\alpha$  is autonomous, accounting prices are not explicit functions of time, and so,  $p_{it} = p_i(\mathbf{K}_i)$ .

## 2.2 Marginal Rates of Substitution vs Market Observables

Using (1) and (6), it can be shown that, if  $\alpha$  is autonomous,  $p_{it}$  satisfies the dynamical equation,

$$dp_{it}/dt = \delta p_{it} - U'(C_t) \partial C_t / \partial K_{it} - \sum_j p_{jt} \partial (dK_{jt}/dt) / \partial K_{it}. \quad (7)$$

(7) reduces to Pontryagin equations for co-state variables in the case where  $\alpha$  is an optimum resource allocation mechanism. In any event, we show below that, in order to study the evolution of accounting prices under simple resource allocation mechanisms, it is often easier to work directly with (6).

From (6) it also follows that accounting price ratios ( $p_{it}/p_{jt}$ ,  $p_{it}/p_{it}$ , and consumption discount rates (see below)) are defined as marginal social rates of substitution between goods. In an economy where the government maximizes social welfare, marginal rates of substitution among goods and services equal their corresponding marginal rates of transformation. As the latter are observable in market economies (e.g. border prices for traded goods in an open economy), accounting prices are frequently defined in terms of marginal rates of transformation among goods and services. However, marginal rates of substitution in imperfect economies do not necessarily equal the corresponding marginal rates of transformation. A distinction therefore needs to be made between the ingredients of social welfare and "market observables". Using market observables to infer social welfare can be misleading in imperfect economies. That we may have to be explicit about welfare

---

<sup>7</sup> Differentiability everywhere is a strong assumption. For practical purposes, however, it would suffice to assume that  $V$  is differentiable in  $K_i$  almost everywhere. The latter would appear to be a reasonable assumption even when production possibilities (including ecological processes) are realistically non-convex. See Section 4 below. However, if the location of these points on the space of capital stocks is uncertain and the uncertainty a smooth probability distribution, the *expected value* of  $V_t$  would be continuous.



parameters (e.g.  $\delta$  and the elasticity of  $U$ ) in order to estimate marginal rates of substitution in imperfect economies is not an argument for pretending that the economies in question are not imperfect after all. In principle it could be hugely misleading to use the theory of optimum control to justify an exclusive interest in market observables.

### 2.3 Genuine Investment as a Measure of Sustainable Development

IUCN (1980) and World Commission (1987) introduced the concept of sustainable development. The latter publication defined sustainable development to be "... development that meets the needs of the present without compromising the ability of future generations to meet their own needs" (World Commission, 1987: 43). Several formulations are consistent with this phrase. But the underlying idea is straightforward enough: we seek a measure that would enable us to judge whether an economy's production possibility set is, in a loose sense, growing. Our analysis is based on an interpretation of sustainability that is based on the maintainence of social welfare, rather than on the maintenance of the economy's productive base. We then show that the requirement that economic development be sustainable implies, and is implied by, the requirement that the economy's productive base be maintained (Theorems 1-3). These results give intellectual support for the definition of sustainability we adopt here.<sup>8</sup>

**Definition 6** The economic programme  $\{C_p, R_p, K_t\}_0^\infty$  corresponds to a *sustainable development path* at  $t$  if  $dV/dt \geq 0$ .<sup>9</sup>

Notice that the above criterion does not attempt to identify a unique economic programme. In principle any number of technologically and ecologically feasible economic programmes could satisfy the criterion. On the other hand, if substitution possibilities among capital assets are severely limited and technological advances are unlikely to occur, it could be that there is no sustainable economic programme open to an economy. Furthermore, even if the government were bent on optimising social welfare, the chosen programme would not correspond to a sustainable path if the utility discount rate,  $\delta$ , were too high. It could also be that along an optimum path social welfare declines for a period and then increases thereafter, in which case the optimum programme does not correspond to a sustainable path locally, but does so in the long run.<sup>10</sup>

Optimality and sustainability are thus different notions. The concept of sustainability helps us to better understand the character of economic programmes, and is particularly useful for judging the performance of imperfect economies.

---

<sup>8</sup> It is not our purpose to review the several ways in which sustainable development can be, and has been, defined. Pezzey (1992) contains an early, but thorough, classification.

<sup>9</sup> For convenience we have defined sustainability only for a moment in time. One could insist on the infinitely more demanding requirement:  $dV/dt \geq 0$  for *all*  $t$ . Readers can confirm that our results can be rephrased in the obvious manner to be in accordance with this stiffer condition.

<sup>10</sup> One of us (KJA) has produced an example of an optimum economic programme displaying the latter feature.

We may now state

$$\mathbf{Theorem 1} \quad dV/dt = \sum_i p_i dK_i/dt + \partial V/\partial \alpha. \quad (8)$$

The proof follows directly from equations (5) and (6).

**Definition 6** The accounting value of the rate of change in the stocks of capital assets is called *genuine investment*.

If  $\alpha$  is autonomous, then  $\partial V/\partial \alpha = 0$ , and so, from equation (8) we have,

$$\mathbf{Theorem 2} \quad \text{If } \alpha \text{ is autonomous, then } dV/dt = \sum_i p_i dK_i/dt. \quad (9)$$

Equation (9) states that at each date the rate of change in social welfare equals genuine investment. Theorem 2 gives a local measure of sustainability. Integrating (9) yields a non-local measure:

**Theorem 3** *If  $\alpha$  is autonomous, then, for all  $T \geq 0$ ,*

$$V_T - V_0 = \sum_i [p_{iT} K_{iT} - p_{i0} K_{i0}] - \int_0^T [\sum_i (dp_{i\tau}/d\tau) K_{i\tau}] d\tau. \quad (10)$$

Equation (10) shows that in assessing whether or not social welfare has increased between two dates, the "capital gains" on the assets that have accrued over the interval should be deducted from the difference in wealth between the dates.

Each of Theorems 1, 2 and 3 is an equivalence result. None says whether  $\alpha$  gives rise to an economic programme along which social welfare is sustained. For example, it can be that an economy is incapable of achieving a sustainable development path, owing to scarcity of resources, limited substitution possibilities among capital assets, or whatever. Or it can be that although the economy is in principle capable of achieving a sustainable development path, social welfare is unsustainable along the path that has been forecast because of bad government policies. Or it can be that  $\alpha$  is optimal, but that because the chosen utility discount rate is large, social welfare is not sustained along the optimum economic programme. Or it can be that along an optimum path social welfare declines for a period and then increases thereafter.

## 2.4 What Else Does Genuine Investment Measure?

Genuine investment is related to changes in future consumption brought about by it. Imagine that the capital base at  $t$  is not  $K_t$  but  $K_t + \Delta K_t$ , where as before,  $\Delta$  is an operator signifying a small difference. In the obvious notation,

$$V(\alpha, K_t + \Delta K_t) - V(\alpha, K_t) \approx \int_t^\infty U'(C_\tau) \Delta(C_\tau) \exp(-\delta(\tau-t)) d\tau. \quad (11)$$

Now suppose that at  $t$  there is a small change in  $\alpha$ , but only for a brief moment,  $\Delta t$ , after which the resource allocation mechanism reverts back to  $\alpha$ . We write the increment in the capital base at  $t + \Delta t$  consequent upon the brief increase in genuine investment as  $\Delta K_t$ . So  $\Delta K_t$  is the consequence of an increase in genuine investment at  $t$  and  $(K_{t+\Delta t} + \Delta K_t)$  is the resulting capital base at  $t + \Delta t$ . Let  $\Delta t$  tend to zero. From equation (11) we obtain

**Theorem 4** *Genuine investment measures the present discounted value of the changes*

---

<sup>11</sup> Pearce and Atkinson (1993) noted this result for optimizing economies.

to consumption services brought about by it.<sup>12</sup>

## 2.5 Project Evaluation Criteria

Theorem 4 provides a criterion for social cost-benefit analysis of policy reforms. Imagine that even though the government does not optimize, it can bring about small changes to the economy by altering the existing resource allocation mechanism in minor ways. The perturbation in question could be small adjustments to the prevailing structure of taxes for a short while, or it could be minor alterations to the existing set of property rights for a brief period, or it could be a small public investment project. Call any such perturbation a "policy reform".

Consider as an example an investment project. It can be viewed as a perturbation to the resource allocation mechanism  $\alpha$  for a brief period (the lifetime of the project), after which the mechanism reverts back to its earlier form. We consider projects that are small relative to the size of the economy. How should they be evaluated?

For simplicity of exposition, we suppose there is a single manufactured capital good ( $K$ ) and a single extractive natural resource ( $S$ ). The aggregate rate of extraction is denoted by  $R$ . Let the project's lifetime be the period  $[0, T]$ . Denote the project's output and inputs at  $t$  by the vector  $(\Delta Y_t, \Delta L_t, \Delta K_t, \Delta R_t)$ . We imagine that if the project is accepted, the project manager would rent  $\Delta K_t$  at  $t$  for the period  $t$  to  $t + \Delta t$ .<sup>13</sup>

The project's acceptance would perturb consumption under  $\alpha$ . Let the perturbation at  $t$  ( $\geq 0$ ) be  $\Delta C_t$ . It would affect  $U_t$  by the amount  $U'(C_t)\Delta C_t$ . However, because the perturbation includes all "general equilibrium effects", it would be tiresome if the project evaluator were required to estimate  $\Delta C_t$  for every project that came up for consideration. Accounting prices are useful because they enable project evaluators to estimate  $\Delta C_t$  indirectly, which means that they do not have to go beyond project data in order to evaluate projects. Now, it is most unlikely that consumption and investment have the same accounting price in an imperfect economy. So we divide  $\Delta Y_t$  into two parts: changes in consumption and in investment in manufactured capital. Denote them as  $\Delta C_t$  and  $\Delta(dK/dt)$ , respectively.

$U$  is the unit of account.<sup>14</sup> Let  $w_t$  denote the accounting wage rate. Next, let  $q_t$  be the

<sup>12</sup> Theorem 4 is, of course, familiar for economies where the government maximises social welfare (see e.g., Arrow and Kurz, 1970).

<sup>13</sup> If the project has been designed efficiently, we would have:

$$\Delta Y_t = (\partial F / \partial K) \Delta K_t + (\partial F / \partial L) \Delta L_t + (\partial F / \partial R) \Delta R_t,$$

where  $F$  is an aggregate production function ( $Y = F(K, L, R)$ ). The analysis that follows in the text does not require the project to have been designed efficiently. As we are imagining that aggregate labour supply is fixed,  $\Delta L_t$  used in the project would be the same amount of labour displaced from elsewhere.

<sup>14</sup> Dasgupta, Marglin, and Sen (1972) and Little and Mirrlees (1974), respectively, developed their accounts of social cost-benefit analysis with consumption and government income as

accounting price of the extractive resource input of the project and  $\lambda_t$  the social cost of borrowing capital (i.e.,  $\lambda_t = \delta - [dp/dt]/p_t$ ).<sup>15</sup>

From the definition of accounting prices, it follows that:

$$\int_0^{\infty} U'(C_t) \Delta C_t \exp(-\delta \tau) d\tau = \int_0^T (U'(C_t) \Delta C_t + p_t \Delta(dK_t/d\tau) - w_t \Delta L_t - \lambda_t p_t \Delta K_t - \hat{q}_t \Delta R_t) \exp(-\delta \tau) d\tau. \quad (12)$$

But the RHS of (12) is the present discounted value of social profits from the project (in utility numeraire). Moreover,  $\int_0^{\infty} U'(C_t) \Delta C_t \exp(-\delta \tau) d\tau = \Delta V_0$ , the latter being the change in social welfare if the project were accepted. We may therefore write (12) as,

$$\Delta V_0 = \int_0^T (U'(C_t) \Delta C_t + p_t \Delta(dK_t/d\tau) - w_t \Delta L_t - \lambda_t p_t \Delta K_t - \hat{q}_t \Delta R_t) \exp(-\delta \tau) d\tau. \quad (13)$$

Equation (13) leads to the well-known criterion for project evaluation:

**Theorem 5** *A project should be accepted if and only if the present discounted value of its social profits is positive.*

## 2.6 Numeraire

So far we have taken utility to be the unit of account. In applied welfare economics, however, it has been found useful to express benefits and costs in terms of current consumption. It will pay to review the way the theory being developed here can be recast in consumption numeraire. For simplicity of exposition, assume that there is a single commodity, that is, an all-purpose durable good that can be consumed or reinvested for its own accumulation. Assume too that the elasticity of marginal utility is a constant,  $\eta$ . Define  $\bar{p}_t$  to be the accounting price of the asset at t in terms of consumption at t; that is,

$$\bar{p}_t = p_t / U'(C_t). \quad (14)$$

It follows from (14) that,

$$(d\bar{p}_t/dt)/\bar{p}_t = (dp_t/dt)/p_t + \eta(dC_t/dt)/C_t. \quad (15)$$

Let  $\rho_t$  be the social rate of discount in consumption numeraire.  $\rho_t$  is sometimes referred to as the consumption rate of interest (Little and Mirrlees, 1974). From (1),

$$\rho_t = \delta + \eta(dC_t/dt)/C_t. \quad (16)$$

numeraire. Which numeraire one chooses is, ultimately, not a matter of principle, but one of practical convenience.

<sup>15</sup> Thus

$$q_t = \int_t^{\infty} U'(C_t) \partial C_t / \partial R_t \exp(-\delta(\tau-t)) d\tau.$$

Notice that if manufactured capital were to depreciate at a constant rate, say  $\gamma$ , the social cost of borrowing capital would be  $\lambda_t = \delta + \gamma - (dp_t/dt)/p_t$ .

Let  $\hat{q}_t$  be the accounting price of the resource *in situ*. At a full-optimum,  $p_t \partial F / \partial R_t = q_t = \hat{q}_t$ , and  $U'(C_t) = p_t$ .

<sup>16</sup> To prove (16) notice that, by definition,  $\rho_t$  satisfies the equation

Using (16) in (15) we obtain the relationship between the asset's prices in the two units of account:

$$(d\bar{p}/dt)/\bar{p}_t = (dp/dt)/p_t + \rho_t - \delta. \quad (17)$$

## 2.7 Intragenerational distribution

The distribution of well-being within a generation has been ignored so far. Theoretically it is not difficult to include this. If there are  $N$  people in each generation and person  $j$  consumes  $C_j$ , her welfare would be  $U(C_j)$ .<sup>18</sup> A simple way to express *intragenerational* welfare would be to "concavify"  $U$ . Let  $G$  be a strictly concave, increasing function of real numbers. We may then express intragenerational welfare as  $\sum_j(G(U(C_j)))$ . Some people would be well-off, others badly-off. The formulation ensures that at the margin, the well-being of someone who is badly off is awarded greater weight than that of someone well-off.

The social worth of consumption services ( $C$ ) depends on who gets what. To accommodate this idea, we have to enlarge the set of commodities so as to distinguish, at the margin, a good consumed or supplied by one person from that same good consumed or supplied by another. Thus, a piece of clothing worn by a poor person should be regarded as a different commodity from that same type of clothing worn by someone who is rich. With this re-interpretation of goods and services, the results we have obtained continue to hold.

## 3 Illustration, 1: a convex production economy

It will prove useful to illustrate the theory by means of a simple example, based on Ramsey (1928) and Solow (1956). As in Section 2.6, imagine that there is an all-purpose durable good, whose stock at  $t$  is  $K_t$  ( $\geq 0$ ). The good can be consumed or reinvested for its own accumulation. There are no other assets. Write output (GNP) as  $Y$ . Technology is linear. So  $Y = \mu K$ , where  $\mu > 0$ .  $\mu$  is the output-wealth ratio. GNP at  $t$  is  $Y_t = \mu K_t$ .

Imagine that a constant proportion of GNP is saved at each moment. There is no presumption though that the saving rate is optimum; rather, it is a behavioural characteristic of consumers, reflecting their response to an imperfect credit market. Other than this imperfection, the economy is assumed to function well. At each moment expectations are fulfilled and all markets other than the credit market clear. This defines the resource allocation mechanism,  $\alpha$ . Clearly,  $\alpha$  is autonomous in time. We now characterise  $\alpha$  explicitly.

Let the saving ratio be  $s$  ( $0 < s < 1$ ). Write aggregate consumption as  $C_t$ . Therefore,

$$C_t = (1-s)Y_t = (1-s)\mu K_t. \quad (18)$$

Capital is assumed to depreciate at a constant rate  $\gamma$  ( $> 0$ ). Genuine investment is therefore,

---


$$U'(C_t)\exp(-\delta t) = U'(C_0)\exp(-\int_0^t \rho_\tau) d\tau.$$

If we differentiate both sides of the above equation with respect to  $t$ , (16) follows.

<sup>17</sup> Notice that in imperfect economies  $\delta$  and  $\eta$  may be unobservable. See Section 2.2.

<sup>18</sup> Person-specific factors (e.g., age, health status, gender) can be included in the welfare function. This is routinely done in applied economics.

$$dK/dt = (s\mu - \gamma)K_t. \quad (19)$$

$K_0$  is the initial capital stock. The economy grows if  $s\mu > \gamma$ , and shrinks if  $s\mu < \gamma$ . To obtain a feel for orders of magnitude, suppose  $\gamma = 0.05$  and  $\mu = 0.25$ . The economy grows if  $s > 0.2$ , and shrinks if  $s < 0.2$ .

Integrating (19), we obtain,

$$K_\tau = K_t \exp[(s\mu - \gamma)(\tau - t)], \quad \text{for all } \tau \text{ and } t, \tau \geq t \geq 0, \quad (20)$$

from which it follows that,

$$C_\tau = (1-s)\mu K_\tau = (1-s)\mu K_t \exp[(s\mu - \gamma)(\tau - t)], \text{ for all } \tau \text{ and } t, \tau \geq t \geq 0. \quad (21)$$

If the capital stock was chosen as numeraire, wealth would be  $K_t$ , and NNP would be  $(\mu - \gamma)K_t$ . Each of wealth, GNP, NNP, consumption and genuine investment expands at the exponential rate  $(s\mu - \gamma)$  if  $s\mu > \gamma$ ; they all contract at the exponential rate  $(\gamma - s\mu)$  if  $s\mu < \gamma$ . We have introduced capital depreciation into the example so as to provide a whiff (albeit an artificial whiff) of a key idea, that even if consumption is less than GNP, wealth declines when genuine investment is negative. Wealth declines when consumption exceeds NNP.

Current utility is  $U(C_t)$ . Consider the form

$$U(C) = -C^{-(\eta-1)}, \quad \text{where } \eta > 1. \quad (22)$$

$\eta$  is the elasticity of marginal utility and  $\delta$  is the social rate of discount if utility is numeraire. Let  $\rho_t$  be the social rate of discount if consumption is the unit of account. It follows that

$$\rho_t = \delta + \eta(dC/dt)/C_t = \delta + \eta(s\mu - \gamma). \quad (23)$$

The sign of  $\rho_t$  depends upon the resource allocation mechanism  $\alpha$ . In particular,  $\rho_t$  can be negative. To see why, suppose the unit of time is a year,  $\delta = 0.03$ ,  $\gamma = 0.04$ ,  $s = 0.10$ ,  $\eta = 2$ , and  $\mu = 0.20$ . Then  $\eta[dC/dt]/C_t = -0.04$  per year, and (23) says that  $\rho_t = -0.01$  per year.<sup>19</sup>

Social welfare at  $t$  is,

$$V_t = \int_t^\infty U(C_\tau) \exp(-\delta(\tau - t)) d\tau. \quad (24)$$

Using (21) and (22) in (24), we have:

$$V_t = -[(1-s)\mu K_t]^{-(\eta-1)} \int_t^\infty \exp(-[(\eta-1)(s\mu - \gamma) + \delta](\tau - t)) d\tau,$$

or, assuming that  $[(\eta-1)(s\mu - \gamma) + \delta] > 0$ ,

$$V_t = -[(1-s)\mu K_t]^{-(\eta-1)} / [(\eta-1)(s\mu - \gamma) + \delta]. \quad (25)$$

$V$  is differentiable in  $K$  everywhere. Moreover,  $\partial V/\partial t = 0$ . Equations (20) and (25) confirm Theorem 1.<sup>20</sup>

We turn now to accounting prices.

### (i) Utility Numeraire

Begin by taking utility to be numeraire. Let  $p_t$  be the accounting price of capital. Now

<sup>19</sup> These are not fanciful figures. Per capita consumption in a number of countries in sub-Saharan Africa declined over the past three decades at as high a rate as 1 percent per year, implying that for small values of  $\delta$ , the consumption rate of interest would have been negative.

<sup>20</sup> As the economy has a single asset, Theorem 3 is trivially true.

$$p_t \equiv \partial V_t / \partial K_t = \int_t^\infty U'(C_\tau) [\partial C_\tau / \partial K_t] \exp(-\delta(\tau-t)) d\tau. \quad (26)$$

Using (25) in (26) we have,

$$p_t = (\eta-1)[(1-s)\mu]^{-(\eta-1)} K_t^{-\eta} / [(\eta-1)(s\mu-\gamma)+\delta]. \quad (27)$$

Using equations (20), (21), (25), and (27) it is simple to check that  $p_t \neq U'(C_t)$ , except when  $s = (\mu + (\eta-1)\gamma - \delta) / \mu\eta$ . Let  $s^*$  be the optimum saving rate. From equation (25) we have,

$$s^* = (\mu + (\eta-1)\gamma - \delta) / \mu\eta. \quad (28)$$

Note that  $p_t < U'(C_t)$  if  $s > s^*$ , which means there is excessive saving. Conversely,  $p_t > U'(C_t)$  if  $s < s^*$ , which means there is excessive consumption.

## (ii) Consumption Numeraire

$$\text{Write } \bar{p}_t = p_t / U'(C_t). \quad (29)$$

Using (26) in (29) yields

$$\bar{p}_t = \int_t^\infty [U'(C_\tau) / U'(C_t)] [\partial C_\tau / \partial K_t] \exp(-\delta(\tau-t)) d\tau. \quad (30)$$

Now use (21), (22) and (30) to obtain

$$\bar{p}_t = \int_t^\infty (1-s)\mu \exp[-(\rho + (s\mu - \gamma))(\tau-t)] d\tau, \quad (31)$$

where  $\rho = \delta + \eta(s\mu - \gamma)$ .

From (31) we have

$$\bar{p}_t = (1-s)\mu / [\rho - (s\mu - \gamma)]. \quad (32)$$

Observe that  $\bar{p}_t > 1$  (resp.  $< 1$ ) if  $s < s^*$  (resp.  $> s^*$ ).<sup>21</sup>

In order to obtain a sense of orders of magnitude, suppose  $\eta = 2$ ,  $\mu = 0.20$ ,  $\gamma = 0.05$ , and  $\delta = 0$ . From (28) we have  $s^* = 0.625$ . Now imagine that  $s = 0.40$  (by Ramsey's criterion, this is undersaving!). Using (23) we have  $\rho = 0.06$  per unit of time. So (32) reduces to  $\bar{p}_t = 4$ . In other words, a saving rate that is approximately 30 percent short of the optimum corresponds to a high figure for the accounting price of investment: investment should be valued four times consumption.

Although intergenerational equity is nearly always discussed in terms of the rate at which future well-being is discounted (see, e.g., Portney and Bryant, 1998), equity would be more appropriately discussed in terms of the curvature of  $U$ . Let the unit of time be a year. Suppose  $\gamma = 0$ ,  $\delta = 0.02$ , and  $\mu = 0.32$ . Consider two alternative values of  $\eta$ : 25 and 50. It is simple to confirm that  $s^* = 0.038$  if  $\eta = 25$  and  $s^* = 0.019$  if  $\eta = 50$ . Intergenerational equity in both consumption and welfare (the latter is a concave function of the former) can be increased indefinitely by making  $\eta$  larger and larger:  $C_t$  becomes "flatter" as  $\eta$  is increased. In the limit, as  $\eta$  goes to infinity,  $s^*$  tends to  $\gamma$  (equation (28)), which reflects the Rawlsian maxi-min consumption as applied to the intergenerational context.<sup>22</sup>

## 4 Illustration, 2: a non-convex ecosystem

<sup>21</sup> A special case of formula (32) appears in Dasgupta, Marglin, and Sen (1972). However, unlike our present work, the earlier publication did not provide a rigorous welfare economic theory for imperfect economies.

<sup>22</sup> Solow (1974) and Hartwick (1977) are the key articles on this limiting case.

The Ramsey-Solow economy discussed above is convex. In this section we confirm that the theory presented in Section 2 can be applied to non-convex economies. We do this by studying a model of shallow lakes.<sup>23</sup>

A key determinant of the overall state of a shallow lake is phosphorus, which is a necessary nutrient for such ecological services in the lake as those that provide a habitat for fish populations. But at high levels of concentration phosphorus is a pollutant, causing as it does increased plant growth, algae blooms, decrease in water transparency, bad odour, oxygen depletion, and fish kills. Thus, the state of a lake can be taken to be the quantity of phosphorus in the water column, which we denote by a scalar,  $S$ .

The rate of phosphorus inflow into a lake is a byproduct of agriculture in the watershed (e.g., as fertilizer runoff from farms). We bring these considerations together and postulate that current utility is a strictly concave and differential function  $U(C, S)$ , where  $U$  is an increasing function of phosphorus inflow,  $C$ . Imagine next that phosphorus has a deleterious effect on the lake at all levels of concentration (and not just at high levels of concentration); which is to say that  $U$  is a decreasing function of  $S$  for all  $S$ . This assumption brings into sharp relief those economic problems where a produced good has positive social worth as a flow, even though it is a pollutant as a stock.

Social welfare at  $t$  is

$$V(S_t) = \int_t^\infty U(C_\tau, S_\tau) \exp(-\delta(\tau-t)) d\tau, \text{ where } U_S < 0 \text{ and } U_C > 0. \quad (33)$$

#### 4.1 Constant Phosphorus Inflow

Consider the case where the resource allocation mechanism for phosphorus inflow is such that  $C_t$  is a constant, say  $\bar{C}$ . Studies have confirmed that there is a feedback of phosphorus from bottom sediments when the density of algae in the lake is large. This feedback is reflected in the form of recycling - from sediment to the water column. Experiments suggest that the recycling rate,  $R$ , is a sigmoid function of  $S$ . A simple form of the relationship is,

$$R_t = bS_t^2/(1 + S_t^2), \quad \text{where } b > 0. \quad (34)$$

The rate of input of phosphorus into the water column is therefore  $[\bar{C} + bS_t^2/(1 + S_t^2)]$ .

However, phosphorus is depleted from the water column owing to sedimentation and water outflow. Assuming that the rate of loss is proportional to  $S$ , say  $\gamma S$  ( $\gamma > 0$ ), the phosphorus content in the lake's water column is governed by the equation,

$$dS/dt = \bar{C} + bS_t^2/(1 + S_t^2) - \gamma S_t. \quad (35)$$

For a range of parameter values  $\bar{C}$ ,  $b$ , and  $\gamma$ , the curves  $[\bar{C} + bS^2/(1 + S^2)]$  and  $\gamma S$  intersect at three points. This is shown in Fig. 1. The upper and lower intersects,  $S_3$  and  $S_1$ , are stable stationary points of (35), whereas the intermediate intersect,  $S_2$ , is unstable. Thus,  $S_2$  is the unique separatrix of the dynamical system.  $S_3$  and  $S_1$  should be thought of as eutrophic and oligotrophic states,

---

<sup>23</sup> For the ecology of shallow lakes, see Scheffer (1997) and Carpenter, Ludwig, and Brock (1999).



respectively. On using (35), the resource allocation mechanism,  $\alpha$ , governing the lake's quality can be expressed as,

$$dS_t/d\tau = \bar{C} + bS_t^2/(1 + S_t^2) - \gamma S_t, \text{ for } \tau \geq t, \text{ for all } t, \text{ where } S_0 \text{ is an initial condition} \quad (36)$$

Clearly,  $\alpha$  is autonomous and time consistent. It is simple to confirm that  $V(S)$  is differentiable in  $S$  everywhere, excepting  $S_2$ . It is simple to confirm as well that, although  $V(S)$  is discontinuous at  $S_2$ , it possesses both right- and left-hand derivatives there. We can therefore define the accounting price of the lake's quality to be  $p(S) = \partial V/\partial S$  at all  $S \neq S_2$  and apply the theory locally for the purposes of project evaluation and sustainability assessment. It should be noted that because phosphorus is a pollutant in the lake,  $p(S) < 0$ .<sup>24</sup>

## 4.2 Optimum Phosphorus Inflow

The resource allocation mechanism defined by (36) reflects an imperfect economy. Brock and Starrett (2003) have studied the optimum resource allocation mechanism. To review their work, we generalize (36). If  $C_t$  is the inflow of phosphorus, the lake's dynamics are given by the equation,

$$dS_t/dt = C_t + bS_t^2/(1 + S_t^2) - \gamma S_t, \quad \text{for } t \geq 0, \quad (37)$$

where  $S_0$  is given as an initial condition.

The problem is to choose  $\{C_t\}_0^\infty$  so as to maximize (33), subject to (37).

Clearly, the optimum resource allocation mechanism is both autonomous and time consistent. In what follows, we restrict ourselves to the case where the optimum is an interior one (i.e.  $C_t > 0$ ). Let  $p_t$  be the accounting price of phosphorus in the lake. Brock and Starrett confirmed that, for  $\{C_t\}_0^\infty$  to be an optimum, it is necessary that  $C_t$  and  $S_t$  satisfy not only (37), but also the Pontryagin conditions,

$$p_t = -U_C (< 0), \text{ for all } t, \quad (38)$$

$$\text{and } (dp_t/dt)/p_t = \delta + \gamma - U_S/U_C - 2bS_t/(1+S_t^2)^2, \text{ for all } t. \quad (39)$$

The point therefore is to select  $p_0$  (equivalently,  $C_0$ ) optimally and allow the dynamical system to evolve in accordance with equations (37)-(39). The authors showed that, in the  $(p, S)$  space, equations (37)-(39) can have at most a countable number of stationary points. They studied in detail the class of parameter values for which the number of stationary points is three. They found that two of them (call them  $S_1$  and  $S_3$ , with  $S_1 < S_3$ , corresponding to what could be interpreted to be the oligotrophic and eutrophic state, respectively) are saddle points, while the intermediate point (call it  $S_2$ ) is a spiral source (i.e., it is unstable).<sup>25</sup> The authors showed that there exists a value of phosphorus stock,  $\bar{S}$ , such that if  $S_0 > \bar{S}$ , the optimum programme asymptotes to

---

<sup>24</sup> Note too that because the resource allocation mechanism is imperfect,  $-U_C \neq \partial V/\partial S$  (see Section 4.2 below).

<sup>25</sup> Although, for ease of exposition, we are using the same notation, the points  $S_1, S_2$ , and  $S_3$  here are not the same as the points  $S_1, S_2$ , and  $S_3$  in the previous sub-section.

$S_3$ ; but if  $S_0 < \bar{S}$ , it asymptotes to  $S_1$ . In short, history matters.<sup>26</sup> It is easy to confirm that if, by fluke,  $S_0 = \bar{S}$ , there are two equally desirable optimal programmes, one that asymptotes to  $S_1$ , another that asymptotes to  $S_3$ . This last property can be shown to imply that  $V(S)$ , although not differentiable at  $\bar{S}$ , is continuous at  $\bar{S}$  and possesses both left- and right-derivatives.  $\bar{S}$  is an endogenously determined separatrix.<sup>27</sup>

Since the optimum resource allocation mechanism is autonomous, we may write by  $p(S)$  the optimum policy function. Phosphorus being a pollutant in the lake, we have  $p(S) < 0$ . It can be shown that  $p(S)$  is differentiable everywhere excepting at  $\bar{S}$ . It can also be demonstrated that  $p(S)$  is discontinuous at  $\bar{S}$ , but is left- and right-differentiable there. Moreover,

$$p(S) = \partial\mathcal{V}/\partial\mathcal{S} (< 0), \quad \text{for all } S \neq \bar{S}. \quad (40)$$

Writing by  $[p(S)]_{\bar{S}-0}$  (resp.,  $[p(S)]_{\bar{S}+0}$ ) the limit of  $p(S)$  as  $S$  tends to  $\bar{S}$  from the left (resp., right), and similarly for  $[\partial\mathcal{V}/\partial\mathcal{S}]_{\bar{S}-0}$  and  $[\partial\mathcal{V}/\partial\mathcal{S}]_{\bar{S}+0}$ , it can be shown too that  $[p(S)]_{\bar{S}-0} = [\partial\mathcal{V}/\partial\mathcal{S}]_{\bar{S}-0}$  and  $[p(S)]_{\bar{S}+0} = [\partial\mathcal{V}/\partial\mathcal{S}]_{\bar{S}+0}$ . The theory we have outlined in Section 2 is thus applicable to the optimum resource allocation mechanism of this particular non-convex economy.

Having illustrated the theory by means of a three examples, we now proceed to obtain rules for estimating accounting prices. We do this by focussing on specific categories of capital assets and several well known institutional imperfections.

### 5 Exhaustible Resources: the closed economy

Accounting prices of exhaustible resources when depletion rates are optimal have been much studied (e.g., Dasgupta and Heal, 1979; see below). What is the structure of their accounting prices when resources are instead common pools?

Two property-rights regimes suggest themselves: open access and restricted entry. They in turn need to be compared to an optimum regime. It is simplest if we avoid a complete capital model. So we resort to a partial equilibrium world: income effects are assumed to be negligible. Let  $R_t$  be the quantity extracted at  $t$ . Income is the numeraire. Let  $U(R)$  be the area under the demand curve below  $R$ . So  $U'(R)$  is taken to be the market demand function.  $U$  is assumed to be an increasing and strictly concave function of  $R$  for positive values of  $R$ . In order to have a notation that is consistent with the one in the foregoing example, we take the social rate of interest to be an exogenously given constant,  $\rho$ . Let  $S_t$  be the stock. Then,

$$dS_t/dt = -R_t. \quad (41)$$

#### 5.1 The Optimum Regime

---

<sup>26</sup> To the best of our knowledge, Kurz (1968) was the first to note that if utility depends directly on capital stocks, the optimality conditions may possess multiple stationary points. Skiba (1978) showed that in non-convex economies the optimality conditions may possess multiple stationary points even if the utility function is independent of stocks. The model of Brock and Starrett (2003) combines the two features.

<sup>27</sup> Brock and Starrett (2003) refer to  $\bar{S}$  as a Skiba point, the reference being to Skiba (1978).

In order to construct a benchmark against which imperfect economies can be evaluated, we first study an optimizing economy. Assume that extraction is costless (constant unit extraction cost can be introduced easily). Social welfare at  $t$  is,

$$V_t = \int_t^\infty U(R_\tau) \exp(-\rho(\tau-t)) d\tau. \quad (42)$$

Let  $p_t^*$  denote the accounting price of the resource underground (equivalently, the Hotelling rent, or the optimum depletion charge per unit extracted). We know that

$$dp_t^*/dt = \rho p_t^*. \quad (43)$$

This is the Hotelling Rule. Moreover, optimum extraction,  $R_t^*$ , must satisfy the condition,

$$U'(R_t) = p_t^*. \quad (44)$$

Assume that

$$U(R) = -R^{-(\eta-1)}, \quad \text{where } \eta > 1. \quad (45)$$

Then

$$R_t^* = (\rho/\eta) S_0 \exp(-\rho t/\eta). \quad (46)$$

We next consider the two imperfect regimes.

## 5.2 Restricted Entry

For vividness, assume that there are  $N$  identical farmers ( $i, j = 1, 2, \dots, N$ ), drawing from an unrechargeable aquifer. Extraction is costless. We model the situation in the following way:<sup>28</sup>

At  $t$ , farmer  $i$  owns a pool of size  $S_{it}$ . Each pool is separated from every other pool by a porous barrier. Water percolates from the pool which is larger to the one which is smaller. Let  $\lambda_{ij}$  ( $> 0$ ), be the rate at which water diffuses from pool  $i$  to pool  $j$ . We assume that  $\lambda_{ij} = \lambda_{ji}$ . Denote by  $R_{it}$  the rate at which  $i$  draws from his pool. There are then  $N$  depletion equations:

$$dS_{it}/dt = \sum_{N-i} [\lambda_{ji}(S_{jt} - S_{it})] - R_{it}, \quad (47)$$

where " $\sum_{N-i}$ " denotes summation over all  $j$  other than  $i$ .

The payoff function for farmer  $i$  at time  $t$  is

$$\int_t^\infty U(R_{i\tau}) \exp(-\rho(\tau-t)) d\tau. \quad (48)$$

Farmers play non-cooperatively. For tractability, we study an open loop solution: Farmers are assumed to be naive (when computing his own optimum extraction rates, each takes the others' extraction rates as given).

Let  $p_{it}$  be the (spot) personal accounting price of a unit of  $i$ 's own resource pool. The present value Hamiltonian for  $i$ 's optimization problem would then be,

$$H_t = U(R_{it}) \exp(-\rho t) + [\sum_{N-i} \lambda_{ji}(S_{jt} - S_{it}) - R_{it}] p_{it} \exp(-\rho t). \quad (49)$$

It follows from (49) that  $p_{it}$  obeys the equation,

$$dp_{it}/dt = (\rho + \sum_{N-i} \lambda_{ji}) p_{it}. \quad (50)$$

For notational simplicity, assume that  $\lambda_{ij} = \lambda$  for all  $i, j$ . Then (50) reduces to

$$dp_{it}/dt = (\rho + (N-1)\lambda) p_{it}. \quad (51)$$

---

<sup>28</sup> McKelvey (1980) has studied a special case of the model of diffusion developed below.

Write  $[\rho + (N-1)\lambda] = \beta$ . We conclude that the rush to extract because of insecure property rights amounts to each extractor using an implicit discount rate,  $\beta$ , which is in excess of the social discount rate  $\rho$ .<sup>29</sup>

Assume now that the elasticity of demand is a constant,  $\eta (> 1)$ . Using (46) and (51), we conclude that the extraction rate from the common pool is

$$R_\tau = (\beta/\eta)S_t \exp(-\beta(\tau-t)/\eta), \text{ for all } \tau \geq t. \quad (52)$$

In order to have a meaningful problem, we take it that  $\beta/\eta > \beta - \rho$  (see below).

Let  $p_t$  be the resource's (social) accounting price. We know

that  $p_t = \partial V_t / \partial S_t$ . Using (46), it follows that,

$$p_t = \int_t^\infty U'(R_\tau) [\partial R_\tau / \partial S_t] \exp(-\rho(\tau-t)) d\tau. \quad (53)$$

Write  $\bar{p}_t = p_t / U'(R_t)$ . Then (51) and (53) imply

$$\bar{p}_t = \beta / (\beta - \eta(\beta - \rho)) > 1. \quad (54)$$

(Notice that  $\bar{p}_t = 1$  if  $\beta = \rho$ .)

As a numerical illustration, consider the case where  $\rho = 0.06$ ,  $\beta = 0.10$ , and  $\eta = 2$ . In this case,  $\bar{p}_t = 5$ , which reflects a considerable imperfection in the resource allocation mechanism in question: the resource's accounting price is five times its market price.

### 5.3 Open Access

We next study an open-access pool. To have a meaningful problem, we now assume that extraction is costly. For simplicity, let the unit extraction cost be a constant  $k (> 0)$ . Under open access, Hotelling rents are dissipated completely. Therefore, the equilibrium extraction rate,  $R_t$ , is the solution of the equation,

$$U'(R_t) = k. \quad (55)$$

Equation (55) confirms that, for any given level of reserves, there is excessive extraction. Let  $\bar{R}$  be the solution of (55). We then have,

$$dS/dt = -\bar{R}.$$

Reserves remain positive for a period  $T = S/\bar{R}$ . Let us normalize utility by setting  $U(0) = 0$ . It follows that,

$$V_t = \int_t^{t+S(t)/\bar{R}} (U(\bar{R}) - k\bar{R}) \exp(-\rho(\tau-t)) d\tau. \quad (56)$$

Let  $p_t$  be the accounting price of the unextracted resource. Then,

$$p_t = \partial V_t / \partial S_t = [(U(\bar{R}) - k\bar{R})/\bar{R}] \exp(-\rho S_t/\bar{R}) > 0. \quad (57)$$

Write  $\bar{p}_t = p_t / U'(\bar{R})$ , which is the ratio of the resource's shadow price to its unit extraction cost.

Then, from (55) and (57),

$$\bar{p}_t = [(U(\bar{R}) - k\bar{R})/k\bar{R}] \exp(-\rho S_t/\bar{R}) > 0. \quad (58)$$

---

<sup>29</sup> In the limit, as  $\lambda$  tends to infinity,  $\beta$  tends to infinity, implying that depletion is instantaneous.

(58) resembles a formula proposed by El Serafy (1989) for estimating depletion charges.<sup>30</sup> The charge is positive because an extra unit of water in the aquifer would extend the period of extraction. Notice that  $\bar{p}_t$  is bounded above by the ratio of the Marshallian consumer surplus to total extraction cost; furthermore, it increases as the aquifer is depleted and attains its upper bound at the date at which the pool is exhausted. If reserves are large,  $\bar{p}_t$  is small, and free access involves no great loss - a familiar result.

What are plausible orders of magnitude? Consider the linear demand function. Assume therefore that

$$U(R) = aR - bR^2, \quad \text{where } a > k \text{ and } b > 0. \quad (59)$$

From (55) and (59),

$$\bar{R} = (a - k)/2b. \quad (60)$$

Substituting (59) and (60) in (58),

$$\bar{p}_t = ((a-k)/2k) \exp(-2b\rho S/(a-k)). \quad (61)$$

Equation (61) says that

$$\bar{p} \geq 1 \text{ iff } \rho S \leq ((a-k)/2b) \ln((a-k)/2k).$$

(61) expresses the magnitude of  $\bar{p}$  in terms of the parameters of the model. Suppose, for example, that  $\rho = 0.02$  per year,  $S/\bar{R} = 100$  years (i.e. at the current rate of extraction, the aquifer will be exhausted in 100 years),  $(a-k)/2k = 20$  (e.g.,  $k = \$0.50$  and  $(a-k) = \$20$ ). Then

$$\bar{p} = 20 \exp(-2) \approx 7. \quad (62)$$

We should conclude that the value to be attributed to water at the margin is high (about 7 times extraction cost). As the date of exhaustion gets nearer, the accounting price rises to its upper bound, 20.

## 6 Exploration and Discoveries

How should one account for expenditure on explorations of new deposits of exhaustible resources? We imagine that the rate at which new reserves are discovered,  $N$ , is an increasing function of (1) current expenditure on explorations,  $E$ , and (2) the accumulated expenditure on explorations,  $M$ , but is a declining function of (3) accumulated extraction,  $Z$ . Denote the discovery function be  $N(E, M, Z)$ , where

$$dM/dt = E, \quad (63)$$

$$\text{and } dZ/dt = R. \quad (64)$$

We revert to the model containing one manufactured capital good,  $K$ , and an exhaustible natural resource,  $S$ . In the familiar notation,  $Y = F(K, R)$  is taken to be the aggregate production function. The remaining equations of motion are,

$$dK/dt = F(K, R) - C - E, \quad (65)$$

$$dS/dt = N(E, M, Z) - R. \quad (66)$$

---

<sup>30</sup> See also Hartwick and Hageman (1993) for a fine discussion that links El Serafy's formula to Hicks' formulation of the concept of national income (Hicks, 1942).

The model has four capital assets  $K, S, M,$  and  $Z$ . Their accounting prices are denoted by  $p_K, p_S, p_M,$  and  $p_Z,$  respectively. Social welfare is given by (1). From Theorem 1, we have

$$dV/dt = p_K[F(K_t, R_t) - C_t - E_t] + p_S[N(E_t, M_t, Z_t) - R_t] + p_M E_t + p_Z R_t. \quad (67)$$

There are two cases to consider:

(A) Assume that  $\partial N/\partial M = 0$  (implying that  $p_M = 0$ ) and  $\partial N/\partial Z < 0$  (implying that  $p_Z < 0$ ). Even in this case genuine investment is not the sum of investment in manufactured capital and changes in proven reserves ( $N_t - R_t$ ). This is because new reserves are valued differently from existing reserves. Note too that exploration costs should not be regarded as investment.

Consider now the special case where the mining industry optimizes.<sup>31</sup> Then  $p_K = p_S \partial N/\partial E$ . If, in addition,  $p_S N_t$  can be approximated by  $p_K E_t$ , one could exclude discoveries of new reserves from genuine investment, but regard instead exploration costs as part of that investment.

(B) Suppose  $\partial N/\partial M > 0$ . If the industry optimizes, we have

$$p_K = p_M + p_S \partial N/\partial E, \quad (68)$$

and so  $p_K > p_M$ . It follows that genuine investment should now include not only new discoveries and investment in manufactured capital (as in Case A), but also exploration costs, using an accounting price that is less than that of manufactured capital.

## 7 Forests and Trees

As stocks, forests offer a multitude of services. Here we focus on forests as a source of timber. Hamilton and Clemens (1999) regard the accounting value of forest depletion to be the stumpage value (price minus logging costs) of the quantity of commercial timber and fuelwood harvested in excess of natural regeneration rates. This is an awkward move, since the authors do not say what is intended to happen to the land being deforested. For example, if the deforested land is converted into an urban sprawl, the new investment in the sprawl would be recorded in conventional accounting statistics.<sup>32</sup> But if it is intended to be transformed into farmland, matters would be different: the social worth of the land as a farm should be included as an addition to the economy's stock of capital assets. In what follows, we consider the simple case where the area is predicted to remain a forest.

Let the price of timber, in consumption numeraire, be unity and let  $\rho$  (assumed constant) be the social rate of discount. Holding all other assets constant, if  $B_t$  is aggregate forest land at  $t$ , we may express social welfare as  $V(B_t)$ . The accounting price of forest land is then  $\partial V/\partial B_t$ , which we write as  $s_t$ .

---

<sup>31</sup> That the industry optimizes does not mean that the economy is following an optimum programme.

<sup>32</sup> It should be noted though that the value of urban land would be more than just the new investment: there is a contribution to the value (which could be of either sign) arising from changes in population density - both in the newly developed property and in places of origin of those who migrate to the property.

Consider a unit of land capable of supporting a single tree and its possible successors. If the land is virgin, if a seed is planted at  $t=0$ , if  $F(T)$  is the timber yield of a tree aged  $T$ , and if  $T$  is the rotation cycle, then the present discounted value of the land as a tree-bearer is,

$$s_0 = F(T)exp(-\rho T)/(1-exp(-\rho T)). \quad (69)$$

Suppose instead that at  $t=0$  the piece of land in question houses a tree aged  $\tau$ . What is the value of the land?

If the cycle is expected to be maintained, we have

$$s_0 = F(T)exp(-\rho(T-\tau))/[1-exp(-\rho(T-\tau))]. \quad (70)$$

If instead the tree is logged now, but the cycle is expected to be maintained, the value of the land, after the tree has been felled, is given by (69). Depreciation of the forest, as a capital asset, is the difference between (70) and (69).

## 8 Human Capital

To develop an accounting framework for knowledge acquisition and skill formation, consider a modified version of the basic model of Section 2. In particular, the underlying resource allocation mechanism is assumed to be autonomous. Labour hours are assumed to be supplied inelastically and population is constant, we may as well then normalize by regarding the labour-hours supplied to be unity.

Production of the consumption good involves physical capital,  $K_{1t}$ , and human capital,  $H_{1t}$ . Here,  $H_{1t}$  is to be interpreted to be the human capital embodied in those who work in the sector producing the consumption good. Thus, if  $Y_t$  is output of the consumption good,

$$Y_t = F(K_{1t}, H_{1t}), \quad (71)$$

where  $F$  is an increasing function of its arguments.

Assume that human capital is produced with the help of physical capital,  $K_{2t}$ , and human capital,  $H_{2t}$ , and that, owing to mortality, it depreciates at a constant rate,  $\gamma$ . Output of human capital is given by the technology

$$G(K_{2t}, H_{2t}), \quad (72)$$

where  $G$  is an increasing function of its arguments and strictly concave, representing that the input of students is given.

By assumption, all individuals at a given moment of time have the same amount of human capital. Therefore,  $H_{1t}/(H_{1t}+H_{2t})$  is the proportion of people employed in the sector producing the consumption good. Let the total quantity of human capital be  $H$ . It follows that

$$H_{1t} + H_{2t} = H. \quad (73)$$

Write

$$K_{1t} + K_{2t} = K_t. \quad (74)$$

For simplicity of exposition, we assume that physical capital does not depreciate. Accumulation of physical capital can be expressed as

$$dK_t/dt = F(K_{1t}, H_{1t}) - C_t, \quad (75)$$

and the accumulation of human capital as

$$dH_t/dt = G(K_{2t}, H_{2t}) - \gamma H_t. \quad (76)$$

Since the resource allocation mechanism,  $\alpha$ , is assumed to be autonomous, we have

$$V_t = V(\alpha, K_{1t}, K_{2t}, H_{1t}, H_{2t}). \quad (77)$$

Let  $p_{1t}$  and  $p_{2t}$  be the accounting prices of physical capital and  $q_{1t}$  and  $q_{2t}$  the accounting prices of human capital, in the two sectors, respectively (i.e.,  $p_{1t} = \partial V_t / \partial K_{1t}$ ,  $q_{2t} = \partial V_t / \partial H_{2t}$ , and so forth). Therefore, wealth can be expressed as,

$$Z_t = p_{1t}K_{1t} + p_{2t}K_{2t} + q_{1t}H_{1t} + q_{2t}H_{2t},$$

and genuine investment by

$$I_t = p_{1t}dK_{1t}/dt + p_{2t}dK_{2t}/dt + q_{1t}dH_{1t}/dt + q_{2t}dH_{2t}/dt. \quad (78)$$

If  $\alpha$  were an optimum resource allocation mechanism, we would have  $p_{1t} = p_{2t} = p_t$ , say, and  $q_{1t} = q_{2t} = q_t$ , say. These prices would be related by the optimality conditions

$$U'(C_t) = p_t; \quad p_t \partial F / \partial K_1 = q_t \partial G / \partial K_2;$$

and  $p_t \partial F / \partial H_1 = q_t \partial G / \partial H_2$ .

Estimating  $q_{1t}$  and  $q_{2t}$  poses difficult problems in practice. It has been customary to identify human capital with education and to estimate its accounting price in terms of the market return on education (i.e., salaries over and above raw labour). But this supposes, as we have assumed in the above model, that education offers no direct utility. If education does offer direct utility (and it is widely acknowledged to do so), the market return on education is an underestimate of what we should ideally be after. Furthermore, human capital includes health, which too is both a durable consumption good and capital good.

An alternative is to use estimates of expenditures on health and education for the purpose in hand. Such a procedure may be a reasonable approximation for poor societies, but it is in all probability far off the mark for rich societies.

## 9 Global Public Goods

Countries interact with one another not only through trade in international markets, but also via transnational externalities. Hamilton and Clemens (1999) include carbon dioxide in the atmosphere in their list of assets and regard the accounting price (a negative number) of a country's emission to be the amount it would be required to pay the rest of the world if carbon emissions were the outcome of a fully cooperative agreement. Their procedure is, consequently, valid only if each country is engaged in maximising global welfare, an unusual scenario. In what follows, we develop the required analysis.

Let  $G_t$  be the stock of a global common at  $t$ . We imagine that  $G$  is measured in terms of a "quality" index which, to fix ideas, we shall regard as carbon dioxide concentration in the atmosphere. Being a global common,  $G$  is an argument in the value function  $V$  of every country. For simplicity of notation, we assume that there is a single private capital good. Let  $K_{jt}$  be the stock of the private asset owned by citizens of country  $j$  and let  $\alpha_j$  be  $j$ 's (autonomous) resource allocation



mechanism and  $\alpha$  the vector of resource allocation mechanisms. If  $V_j$  is  $j$ 's value function, we have

$$V_{jt} = V_j(\alpha, K_{jt}, G_t). \quad (79)$$

Let  $p_{jt} = \partial V_{jt} / \partial K_{jt}$  and  $g_{jt} = \partial V_{jt} / \partial G_t$ . It may be that  $G$  is an economic "good" for some countries, while it is an economic "bad" for others. For the former,  $g_j > 0$ ; for the latter,  $g_j < 0$ . Let  $E_{kt}$  be the emission rate from country  $k$  and let  $\gamma$  be the rate at which carbon in the atmosphere is sequestered.

It follows that

$$dG_t/dt = \sum_k E_{kt} - \gamma G_t. \quad (80)$$

Genuine investment in  $j$  is,

$$I_t = dV_{jt}/dt = p_{jt} dK_{jt}/dt + g_{jt} dG_t/dt,$$

which, on using (80), can be expressed as

$$I_t = p_{jt} dK_{jt}/dt + g_{jt} (\sum_k E_{kt} - \gamma G_t). \quad (81)$$

Notice that the expression on the RHS of (81) is the same whether or not  $\alpha$  is based on international cooperation. On the other hand,  $dK_{jt}/dt$  and  $dG_t/dt$  do depend on how the international resource allocation mechanisms are arrived at (e.g., whether they are cooperative or non-cooperative); and they affect the accounting prices,  $p_{jt}$  and  $g_{jt}$ .<sup>33</sup>

## 10 Exogenous Productivity Growth

To assume exogenous growth in total factor productivity (the residual) over the indefinite future is imprudent. It is hard to believe that serendipity, unbacked by R&D effort and investment, can be a continual source of productivity growth. Moreover, many environmental resources go unrecorded in growth accounting. If the use of natural capital in an economy has in fact been increasing, estimates of the residual could be presumed to be biased upward. On the other hand, if a poor country were able to make free use of the R&D successes of rich countries, it would enjoy a positive residual.

The residual can have short bursts in imperfect economies. Imagine that a government reduces economic inefficiencies by improving the enforcement of property rights, or reducing centralized regulations (import quotas, price controls, and so forth). We would expect the factors of production to find better uses. As factors realign in a more productive fashion, total factor productivity would increase.

In the opposite vein, the residual could become negative for a period. Increased government corruption could be a cause; the cause could also be civil strife, which destroys capital assets and damages a country's institutions. When institutions deteriorate, assets are used even more inefficiently than before and the residual declines. This would appear to have happened in sub-Saharan Africa during the past forty years (Collins and Bosworth, 1996).

We now study sustainability in the context of two models of exogenous productivity growth.

---

<sup>33</sup> Social cost-benefit analysis, as sketched in Section 2.4, would enable a country to estimate whether it ought to alter its emissions. Nordhaus and Yang (1996) have studied international carbon emissions as the outcome of a non-cooperative equilibrium game among nations.

## 10.1 Labour-augmenting Technical Progress

Consider an adaptation of the model explored in Section 3. Physical capital and a constant labour force together produce a non-deteriorating all purpose commodity. The economy enjoys labour augmenting technological progress at a constant rate  $n$ . If  $K$  is capital and  $A$  is knowledge, we have in the usual notation,

$$Y_t = F(K_t, A_t), \quad (82)$$

$$dK/dt = F(K_t, A_t) - C_t, \quad (83)$$

$$\text{and } dA/dt = nA_t. \quad (84)$$

There are two capital goods,  $K$  and  $A$ . Let  $p_K$  and  $p_A$ , respectively, be their accounting prices in utility numeraire. The sustainability criterion is then  $p_K dK/dt + p_A dA_t/dt \geq 0$ , or, equivalently,

$$dK/dt + q_t dA/dt \geq 0, \text{ where } q_t \equiv p_A/p_K. \quad (85)$$

It is instructive to study the case where the resource allocation mechanism is optimal. The equations of motion for  $p_K$  and  $p_A$  are,

$$dp_K/dt = \delta p_K - p_K \partial F / \partial K, \quad (86)$$

$$\text{and } dp_A/dt = \delta p_A - p_K \partial F / \partial A - np_A. \quad (87)$$

Using (85)-(87) yields,

$$dq_t/dt = (\partial F / \partial K - n)q_t - \partial F / \partial A. \quad (88)$$

Suppose  $F$  displays constant returns to scale. Define  $k = K/A$  and  $c = C/A$ . Write  $f(k) \equiv F(k, 1)$ .

From (83) and (84) we have

$$dk/dt = f(k_t) - nk_t - c_t,$$

$$\text{or } dk/dt = (\partial F / \partial K)k_t + \partial F / \partial A - nk_t - c_t. \quad (89)$$

Adding (88) and (89) yields

$$d(q_t + k_t)/dt = (\partial F / \partial K - n)(q_t + k_t) - c_t. \quad (90)$$

It is simple to confirm that  $q+k$  is the present value of future consumption (discounted at the rate  $\partial F / \partial K$ ) divided by  $A$  (the current state of knowledge). It follows that the sustainability criterion at  $t$  (condition (85)), divided by  $A_t$ , is

$$dk/dt + n(k_t + q_t) \geq 0. \quad (91)$$

## 10.2 Resource Augmenting Technical Progress

Consider an alternative world, where output,  $Y$ , is a function of manufactured capital ( $K$ ) and the flow of an exhaustible natural resource ( $R$ ). Let  $A_t R_t$  be the effective supply of the resource in production at  $t$  and  $S_t$  the resource stock at  $t$ . Then we may write,

$$Y_t = F(K_t, A_t R_t), \quad (92)$$

$$dK/dt = F(K_t, A_t R_t) - C_t, \quad (93)$$

$$dA/dt = n, \quad (94)$$

$$dS/dt = -R_t. \quad (95)$$

There are three state variables. But we can reduce the model to one with two state variables. Thus, write  $Q_t \equiv A_t R_t$  and  $X_t = A_t S_t$ . Then (93) and (94) become,

$$dK/dt = F(K_t, Q_t) - C_t, \quad (96)$$

$$\text{and } dX/dt = nX_t - Q_t. \quad (97)$$

This is equivalent to a renewable resource problem, and the steady state is the Green Golden Rule, with

$$nX = Q. \quad (98)$$

Let  $p_K$  and  $p_X$  be the accounting prices of  $K_t$  and  $X_t$ , respectively. Then the sustainability condition is,

$$p_K dK/dt + p_X dX/dt \geq 0. \quad (99)$$

It is instructive to study the case where the resource allocation mechanism is optimal. Suppose also that  $F$  displays constant returns to scale. Following the approach of the previous example, let  $q_t = p_X/p_K$ . Then it is easy to confirm that

$$(dq/dt)/q_t = \partial F/\partial K - n. \quad (100)$$

Moreover, the optimal use of the productivity adjusted natural resource,  $Q_t$ , is determined by the condition,

$$\partial F/\partial Q = q_t. \quad (101)$$

Along the optimal programme, the sustainability condition (99) is,

$$F(K_t, Q_t) - C_t + q_t(nX_t - Q_t) \geq 0, \quad (102)$$

$$\text{or } (\partial F/\partial K)K_t + (\partial F/\partial Q)Q_t - C_t + q_t(nX_t - Q_t) \geq 0, \quad (103)$$

$$\text{or } (\partial F/\partial K)K_t - C_t + nq_t X_t \geq 0. \quad (104)$$

Inequality (104) says that consumption must not exceed the sum of capital income and the sustainable yield.

## 11 Exhaustible Resources: the exporting economy

The export of natural resources at given world prices raises issues similar to those we have just encountered in our analysis of exogenous productivity change. The exogenous "drift" term,  $\partial V/\partial t$ , in equation (8) has to be estimated.

Assume that extraction is costless. Suppose that at time  $\tau$  the world market price of an exhaustible resource is  $q_\tau$ . If  $R_\tau$  is the volume of export, revenue is  $q_\tau R_\tau$ .

$$\text{Write } C_\tau = q_\tau R_\tau \quad (105)$$

The country's export policy, being governed by the underlying  $\alpha$ , can be expressed as  $R(\tau, S_t, t)$  for  $\tau \geq t$ . From equation (105) it follows that

$$dC_\tau/dt = q_\tau dR_\tau/dt = (\partial C_\tau/\partial S_t) dS_t/dt + q_\tau \partial R_\tau/\partial t, \quad (106)$$

As before, we assume that social welfare at  $t$  is,

$$V_t = \int_t^\infty U(C_\tau) \exp(-\rho(\tau-t)) d\tau. \quad (107)$$

Let  $p_t$  denote the resource's accounting price. Since the criterion for sustainable well-being is  $dV/dt$ , we differentiate both sides of equation (107) with respect to  $t$  to obtain,

$$dV/dt = -U(C_t) + \rho V_t + \int_t^\infty U'(C_\tau) [(\partial C_\tau/\partial S_t) dS_t/dt + q_\tau \partial R_\tau/\partial t] \exp(-\rho(\tau-t)) d\tau. \quad (108)$$

But

$$dS/dt = -R_t.$$

Therefore, equation (108) reduces to

$$dV/dt = -U(C_t) + \rho V_t + p_t dS/dt + \int_t^\infty U'(C_\tau) \exp(-\rho(\tau-t)) (\partial C_\tau / \partial t) d\tau. \quad (109)$$

$$\text{Define } \mu(\tau, t) = \partial C_\tau / \partial \tau + \partial C_\tau / \partial t. \quad (110)$$

$\mu(\tau, t)$  can be regarded as an index of the extent to which the resource allocation mechanism is non-autonomous. Using equations (105)-(107) and (110), the RHS of equation (109) can be reexpressed as,

$$dV/dt = -U(C_t) + \rho V_t + p_t dS/dt + \int_t^\infty U'(C_\tau) \exp(-\rho(\tau-t)) \mu(\tau, t) d\tau - \int_t^\infty U'(C_\tau) \exp(-\rho(\tau-t)) (\partial C_\tau / \partial \tau) d\tau. \quad (111)$$

On partially integrating the last term on the RHS of equation (111) and cancelling terms, we obtain,

$$dV/dt = p_t dS/dt + \int_t^\infty U'(C_\tau) \exp(-\delta(\tau-t)) \mu(\tau, t) d\tau. \quad (112)$$

The integral on the RHS of (112) is the "drift" term. As (112) shows, the index of sustainable welfare is the algebraic sum of genuine investment and the drift term. We now proceed to obtain simple rules for estimating the index in the case of two special non-optimum resource allocation mechanisms.<sup>34</sup>

Suppose  $C$  is constant.<sup>35</sup> In this case,

$$\partial C_\tau / \partial \tau = \partial C_\tau / \partial t = 0,$$

and  $\mu(\tau, t) = 0$  in (112) is zero, and genuine investment measures changes in social welfare.

Suppose instead  $R$  is constant. It follows that

$$\partial R_\tau / \partial \tau + \partial R_\tau / \partial t = 0, \quad (113)$$

$$\text{and } \mu(\tau, t) = R_\tau \partial q_\tau / \partial \tau = q_\tau R_\tau (\partial q_\tau / \partial \tau) / q_\tau \quad (114)$$

Using (113) and (114), we may write,

$$\int_t^\infty U'(C_\tau) \exp(-\delta(\tau-t)) \mu(\tau, t) d\tau = \bar{\mu}_t / \delta, \quad (115)$$

where  $\bar{\mu}_t$  can be interpreted as the average capital gains on the world market, as viewed from time  $t$ . Formally, (112) can be re-written as,

$$dV/dt = p_t dS/dt + \bar{\mu}_t / \delta. \quad (116)$$

## 12. Defensive Expenditure

How should defensive expenditure toward pollution control appear in national accounts?

Denote by  $Q_t$  the stock of defensive capital and  $X_t$  investment in its accumulation. Let  $P_t$  be the stock of pollutants and  $Y_t$  aggregate output. We may then write,

$$dP/dt = G(Y_t, Q_t) - \pi P_t, \text{ where } G(Y_t, Q_t) \geq 0, \partial G / \partial Y > 0 \text{ and } \partial G / \partial Q < 0. \quad (117)$$

Moreover, if defensive capital depreciates at the rate  $\xi$ , then

---

<sup>34</sup> Asheim (1996), Sefton and Weale (1996), Vincent, Panayotou, and Hartwick (1997), Aronsson and Löfgren (1998), and Cairns (2002) have published related findings, but in the context of optimising economies.

<sup>35</sup> In this case the resource will be exhausted in finite time. For notational simplicity, we continue to present matters as though the horizon is infinite.

$$dQ/dt = X_t - \gamma Q_t, \quad \text{where } \gamma > 0. \quad (118)$$

In the usual notation, the accumulation equation is expressed as,

$$dK/dt = F(K_t) - C_t - X_t. \quad (119)$$

Denote by  $p_t$  the accounting price of  $K$ ,  $m_t$  that of defensive capital, and  $r_t (< 0)$  the accounting price of the pollutant. Wealth can then be expressed as,

$$p_t K_t + m_t Q_t + r_t P_t,$$

and genuine investment at  $t$  as,

$$I_t = p_t dK/dt + m_t dQ/dt + r_t dP/dt. \quad (120)$$

Equation (120) says that defensive expenditure against pollution ought to be included in the estimation of genuine investment ( $m_t dQ/dt$ ), but, then, so should changes in the quality of the environment be included ( $r_t dP/dt$ ). To include the former, but not the latter, would be a mistake.

### 13. Population Change and Sustainable Development

How does demographic change affect the index of sustainable development? There are a number of conceptual problems inherent in the welfare economics of reproductive behaviour that still remain unsettled. Such problems have typically been bypassed in growth accounting; instead, it has been customary there to regard changes in population to be exogenously given. We follow that practice here.<sup>36</sup>

We seek to determine how population change influences the drift term ( $\partial V_t / \partial t$ ) on the RHS of equation (8). An equivalent way of casting the problem is to regard population as a capital asset. Once we do that, what could appear to be a non-autonomous model reduces to an autonomous one. To illustrate, we adopt a natural extension of Harsanyi (1955) by regarding social welfare to be the average utility of all who are ever born. We formalize this 'dynamic average utilitarianism' as follows:

Let  $N_t$  be population size at  $t$  and  $n(N_t)$  the percentage rate of change of  $N_t$ .<sup>37</sup> For notational simplicity, we ignore intragenerational inequality and changes in the age composition of the population. Let  $c_t$  denote *per capita* consumption at  $t$ . If  $C_t$  is aggregate consumption,  $c_t = C_t / N_t$ . Assume as before that labour is supplied inelastically in each period. Current utility of the representative person is  $U(c_t)$  and social welfare is,

$$V_t = \int_t^\infty N_\tau U(c_\tau) \exp(-\delta(\tau-t)) d\tau / \int_t^\infty N_\tau \exp(-\delta(\tau-t)) d\tau. \quad (121)$$

If  $V_t$  is to be well-defined, we need to suppose that there exists  $\epsilon > 0$ , such that  $(\delta - \epsilon)t > \int_0^t n(N_\tau) d\tau$  for large enough  $t$ . Notice though that, once we are given the population forecast, the denominator in (121) is independent of the policies that could be chosen at  $t$ . This means that a

---

<sup>36</sup> For a discussion of such problems and possible resolutions to the paradoxes that normative population theory has given rise to, see Dasgupta (2001b).

<sup>37</sup> If  $N_t$  is a logistic function,  $n(N_t) = A(N^* - N_t)$ , where  $A$  and  $N^*$  are positive constants.

<sup>38</sup> See Dasgupta (2001b) for a justification of this form of intergenerational welfare.

policy deemed to be *optimal* if (121) were used as the criterion of choice would also be judged to be optimal if instead social welfare  $V_t$  were taken to be of the form,

$$V_t = \int_t^{\infty} N_{\tau} U(c_{\tau}) \exp(-\delta(\tau-t)) d\tau. \quad (122)$$

But for assessing whether or not a pattern of development sustains  $V_t$ , it matters whether  $V_t$  is taken to be (121) or (122).

Let  $K_{it}$  denote the stock of the  $i$ th type of capital good and write  $k_{it} = K_{it}/N_t$ . We now express by  $\mathbf{k}_t$  the vector of capital stocks per head. The state variables are therefore  $\mathbf{k}_t$  and  $N_t$ . We take it that  $\alpha$  is autonomous. Then equation (121) implies that

$$V_t = V(\mathbf{k}_t, N_t). \quad (123)$$

Let the numeraire be utility. Define  $v_t = \partial V_t / \partial N_t$ . It is the contribution of an additional person at  $t$  to social well-being.  $v_t$  is the accounting price of a *person* (as distinct from the accounting price of a person's human capital). Note that  $v_t$  can be negative, depending on initial conditions at  $t$  and on the resource allocation mechanism.

Let  $p_{it}$  denote the accounting price of  $k_{it}$ . Equation (123) then implies

$$dV_t/dt = \sum_i p_{it} dk_{it}/dt + v_t dN_t/dt. \quad (124)$$

The RHS of equation (124) is genuine investment, inclusive of the change in the size of the population. It generalizes equation (8). We conclude that Proposition 1 remains valid so long as wealth comparisons mean comparisons of wealth *per capita, adjusted for demographic changes*.

In Arrow, Dasgupta, and Mäler (2003), we have studied optimal economies in which the adjustment term ( $v_t dN_t/dt$ ) is not negligible, but nevertheless can be estimated in a simple way. Dasgupta (2001b) identified a set of circumstances where the term vanishes even in an imperfect economy. Suppose (i)  $n(N_t)$  is independent of  $N_t$ ; (ii) all the production processes are linear; and (iii)  $c_t = c(\mathbf{k}_t)$ , meaning that under the resource allocation mechanism  $\alpha$ , *per capita* consumption is not a function of population size. In such circumstances  $V_t$  is independent of  $N_t$  (i.e.  $v_t = 0$ ) and, so, equation (124) reduces to

$$dV_t/dt = \sum_i p_{it} dk_{it}/dt. \quad (125)$$

This finding can be summarised as

**Theorem 6** *If (i)  $n(N_t)$  is independent of  $N_t$ , (ii) all the production processes are linear, and (iii)  $c_t = c(\mathbf{k}_t)$ , then social welfare is sustained at a point in time if and only if the value of the changes in per capita capital assets at that instant is non-negative.*

The conditions underlying Theorem 6 are overly strong. It is tempting nevertheless to regard the value of changes in the per capita stocks of capital assets as a first approximation of  $dV_t/dt$  and then to estimate correction terms that reflect departures from the conditions underlying the theorem. That investigation is left for future work.<sup>39</sup>

## 14. Uncertain Productivity

---

<sup>39</sup> In Dasgupta (2001b) Theorem 6 was invoked to assess whether the world's poorest regions have experienced sustainable development in the recent past.

How does future uncertainty in the productivity of capital assets influence accounting prices? In order to study this question in the simplest possible way, we revert to the Ramsey-Solow model of Section 3 and assume that the productivity of the single asset is uncertain. Analytically it is easiest to imagine that the underlying stochastic process generates a return on investment that is independently and identically distributed (iid) in each period. For convenience we now suppose that time is discrete ( $t=0,1,2,\dots$ ). In what follows we indicate that a variable is random by placing a tilde over it. Let us denote the uncertain productivity of investment at date  $t$  by  $\tilde{\mu}_t$ . We assume that  $\tilde{\mu}_t$  is non-negative and that the distribution of  $\tilde{\mu}_t$  is atomless.

Population is assumed to be a constant and aggregate saving is taken to be a constant proportion,  $s$ , of wealth, where  $0 < s < 1$ . At each  $t$  the size of the capital stock that has been inherited from the previous period is a known quantity. Consumption is a fixed proportion  $(1-s)$  of that inherited stock. Therefore, assuming that capital does not deteriorate, the discrete time, stochastic counterpart of the accumulation equation (19) is,

$$\tilde{K}_{t+1} = (K_t - C_t)\tilde{\mu}_t,$$

from which we conclude that

$$\tilde{K}_{t+1} = s\tilde{\mu}_t K_t, \quad t \geq 0,$$

and thus,

$$C_\tau = (1-s)K_t \prod_{k=t}^{\tau-1} (s\tilde{\mu}_k), \quad \text{for } \tau > t \geq 0. \quad (126)$$

Writing by  $U(C)$  the utility of consumption, we take it that social welfare ( $V$ ) is the expected value of the sum of discounted utilities over time. Letting  $E$  denote the expectation operator, this means that

$$V_t = E[\sum_{\tau=t}^{\infty} U(C_\tau) \beta^{\tau-t}], \text{ where } \beta \equiv 1/(1+\delta) \text{ and } \delta > 0. \quad (127)$$

Suppose utility is iso-elastic. Let  $\eta$  be the elasticity of marginal utility. We consider the empirically interesting case,  $\eta > 1$ .<sup>40</sup> We write  $U$  as:

$$U(C) = C^{1-\eta}/(1-\eta), \quad \text{where } \eta > 1. \quad (128)$$

In (128),  $U$  is bounded above, but is unbounded below.

Write  $E(\tilde{\mu}_t^{(1-\eta)}) = E(\tilde{\mu}^{(1-\eta)})$ . If  $V_t$  is to be well-defined, we must now suppose that

$$\beta s^{(1-\eta)} E(\tilde{\mu}^{(1-\eta)}) < 1. \quad (129)$$

Using (126) and (128), and noting that the series in (127) is absolutely convergent, we can rewrite (127) as

$$V_t = -(1-s)^{(1-\eta)} K_t^{(1-\eta)} / (\eta-1) [1 - \beta s^{(1-\eta)} E(\tilde{\mu}^{(1-\eta)})],$$

and, so, deduce that the asset's accounting price is

$$p_t = \partial V_t / \partial K_t = (1-s)^{(1-\eta)} K_t^{-\eta} / [1 - \beta s^{(1-\eta)} E(\tilde{\mu}^{(1-\eta)})]. \quad (130)$$

How would changes in the distribution of  $\tilde{\mu}_\tau$  ( $\tau \geq t$ ) affect  $p_t$ ? To study this, imagine that

---

<sup>40</sup> Estimates of the elasticity of marginal utility obtained from consumer behaviour, or, alternatively, from consumer responses to questions, have typically been in the range 1.5-2.5. The evidence thus acquired does not of course reflect what we mean by  $\eta$  here, but it is close enough.

$\log(\tilde{\mu}_i)$  is normally distributed with mean  $m$  and variance  $\sigma^2$ . Denote the mean of  $\tilde{\mu}_i$  by  $\bar{\mu}$ . In that case, we know that

$$\bar{\mu} = \exp(m + \sigma^2/2), \quad (131)$$

$$E(\tilde{\mu}^{1-\eta}) = \bar{\mu}^{1-\eta} \exp(-\eta(1-\eta)\sigma^2/2), \quad (132)$$

and  $\text{var}(\tilde{\mu}) = \bar{\mu}^2[\exp(\sigma^2) - 1]$ . (133)

From (130)-(133) we confirm that, holding  $\text{var}(\tilde{\mu})$  constant,  $dp/d\bar{\mu} < 0$ . To study the effect of an increase in  $\text{var}(\tilde{\mu})$  on  $p$ , while keeping  $\bar{\mu}$  constant, we must allow  $\sigma$  to increase in such a way that  $(m + \sigma^2/2)$  remains unchanged. It is now a simple matter to confirm that  $\partial p/\partial \sigma^2 > 0$ . And so, we have

**Theorem 7** *Other things the same, (i) if the expected return on investment were to increase, the assets' accounting price would decrease, and (ii) if the underlying risk in the asset's productivity were to increase, so would its accounting price increase.*

Part (i) of Theorem 7 says that an increase in the expected rate of return on investment would lead to a decrease in the asset's accounting price, other things the same. But Part (ii) is also consistent with intuition. From (128) we know that utility, while bounded above, is unbounded below. We would then expect  $V_i$  to be particularly sensitive to the downside risk in  $\tilde{\mu}$ . Part (ii) of Theorem 7 says that if the risk in  $\tilde{\mu}$  were to increase, the asset (at the margin) would become more valuable - other things the same. The Theorem's message should be expected to be even stronger if the underlying transformation possibilities among goods and services were to display thresholds, or, more generally, ecological non-convexities of the kind that is present in the model of the shallow lake (Section 4).<sup>41</sup>

Of course, consumers could be expected to respond to an increase in the mean return on investment, or to an increase in uncertainty in the return. What would be their response? We cannot tell unless we model the economic environment in which various parties make their saving decisions. The simplest place to look is an environment where the saving rate is optimal. There, people's response to a change in risk is also optimal. Levhari and Srinivasan (1969) have shown that in the model economy being studied here, if  $U$  is homogeneous of degree  $(1-\eta)$  in  $C$ , the optimal saving ratio ( $s^*$ ) is the solution of the equation,

$$s^\eta = \beta E(\tilde{\mu}^{1-\eta}). \quad (134)$$

Let us continue to assume that  $\eta > 1$ . From (130) and (134) we conclude that if the saving rate is optimal, then, other things the same, an increase in the expected return on investment leads to a decline in the accounting price of capital (i.e.,  $dp/d\bar{\mu} < 0$ ), and an increase in the riskiness of return

---

<sup>41</sup> The reader can confirm that if  $0 < \eta < 1$  in (128), then  $dp/d\bar{\mu} > 0$  and  $dp/d\sigma^2 < 0$ ; and if  $\eta = 1$  (i.e.,  $U(C) = \log C$ ), then  $dp/d\bar{\mu} = dp/d\sigma^2 = 0$ . See the following footnote for an intuitive explanation for these results.



leads to an increase in the accounting price (i.e.,  $dp/d\sigma^2 > 0$ ).<sup>42</sup>

Accounting prices of capital assets (as opposed to their market prices) are rarely estimated; but when they *are*, the estimates are mostly made on the basis of economic models that eschew uncertainty. The general moral of our finding here is that such studies underestimate the social worth of those assets.

## 15 Concluding Remarks

In this paper we have explored the way welfare analysis can be conducted in imperfect economies. In Sections 2-3 it was confirmed that the same set of accounting prices should be used both for the evaluation of policy reforms (e.g., project evaluation) and for assessing whether the economic programme being pursued sustains intergenerational welfare. In Sections 5-14 we studied the properties of accounting prices of environmental natural resources under a variety of institutional arrangements. We showed that for a number of cases it is possible to derive simple formulae for accounting prices. It was found that under plausible values of the relevant parameters, accounting prices of goods and services can be substantially different from their market prices.

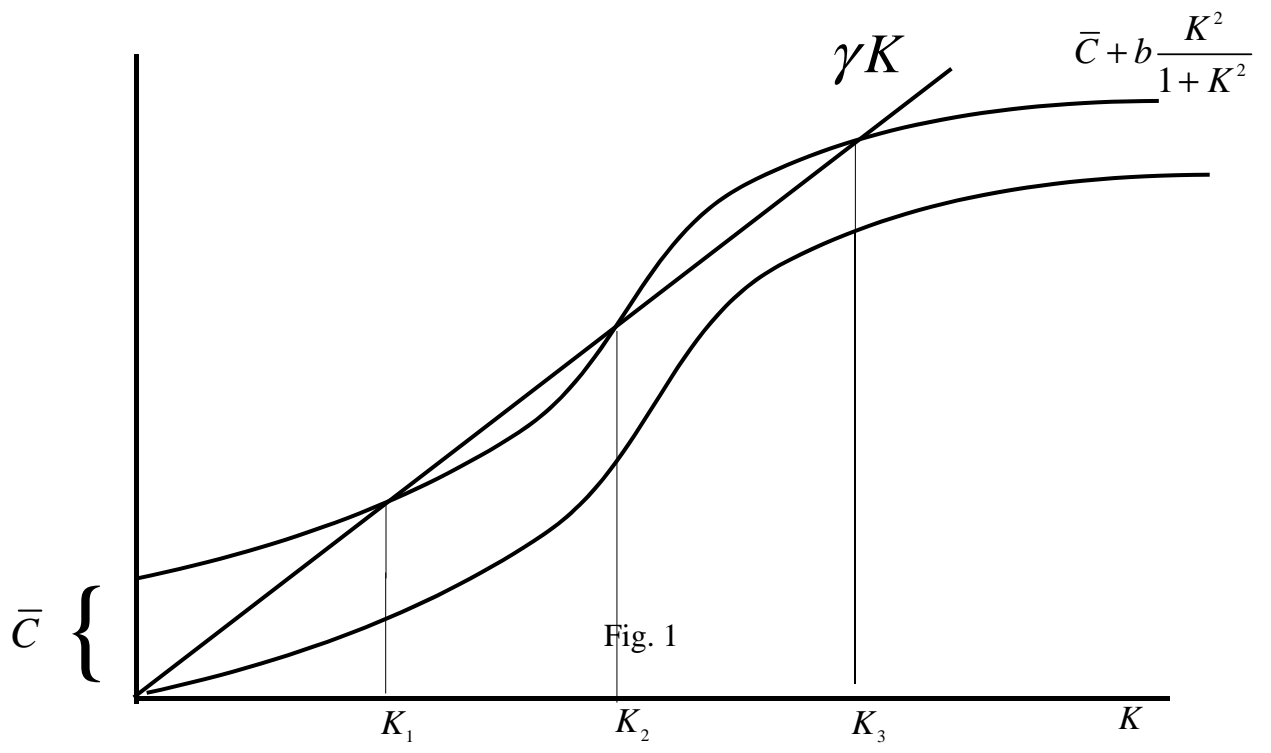
A large empirical literature in ecology and epidemiology offers evidence that ecological processes are driven by non-convex transformation possibilities.<sup>43</sup> We note here in passing that metabolic processes also involve non-convex functional relationships between nutrition intake and nutritional status.<sup>44</sup> It was confirmed that accounting prices can be used in non-convex environments (Section 4). Our hope is that the methods developed here will be of use not only in environmental and resource economics (our focus of concern here), but also in nutrition and epidemiological studies.

---

<sup>42</sup> The reader can confirm that if  $0 < \eta < 1$  in (128) and (134), then  $dp/d\bar{\mu} > 0$  and  $dp/d\sigma^2 < 0$ . To understand the result, note that if  $0 < \eta < 1$ , then  $U$  is unbounded above, but bounded below.  $\eta = 1$  corresponds to the case where  $U(C) = \log C$ . In this case  $s^*$  is independent of both  $\bar{\mu}$  and  $\sigma^2$ , and so  $dp/d\bar{\mu} = dp/d\sigma^2 = 0$ . The opposite pulls arising from the unboundedness of  $U$  at both ends cancel each other. See Hahn (1970) for an intuitive explanation for the way  $\eta$  influences the relationship between  $\sigma$  and  $s^*$ .

<sup>43</sup> See, for example, Murray (1993).

<sup>44</sup> On this see Dasgupta (1993).



## References

- Aronsson, T. and K.-G. Löfgren (1998), "Green Accounting in Imperfect Economies", *Environmental and Resource Economics*, 11, 273-287.
- Arrow, K.J., P. Dasgupta, and K.-G. Mäler (2003), "The Genuine Saving Criterion and the Value of Population", *Economic Theory*, 21, 217-225.
- Arrow, K.J. and M. Kurz (1970), *Public Investment, the Rate of Return and Optimal Fiscal Policy* (Baltimore: Johns Hopkins University Press).
- Asheim, G.B. (1996), "Capital Gains and Net National product in Open Economies", *Journal of Public Economics*, 59, 419-434.
- Brock, W. and D. Starrett (2003), "Non-Convexities in Ecological Management Problems", *Environmental and Resource Economics*, this issue.
- Cairns, R.D. (2002), "Green Accounting Using Imperfect, Current prices", *Environment and Development Economics*, 7, 207-214.
- Carpenter, S.R., D. Ludwig, and W.A. Brock (1999), "Management of Eutrophication for Lakes Subject to Potentially Irreversible Change", *Ecological Applications*, 9, 751-71.
- Collins, S. and B. Bosworth (1996), "Economic Growth in East Asia: Accumulation versus Assimilation", *Brookings Papers on Economic Activity*, 2, 135-91.
- Dasgupta, P. (1993), *An Inquiry into Well-Being and Destitution* (Oxford: Clarendon Press).
- Dasgupta, P. (2001a), "Valuing Objects and Evaluating Policies in Imperfect Economies", *Economic Journal*, 111 (Conference Issue), 1-29.
- Dasgupta, P. (2001b), *Human Well-Being and the Natural Environment* (Oxford: Oxford University Press).
- Dasgupta, P. and G. Heal (1979), *Economic Theory and Exhaustible Resources* (Cambridge: Cambridge University Press).
- Dasgupta, P. and K.-G. Mäler (2000), "Net National Product, Wealth, and Social Well-Being", *Environment and Development Economics*, 5, 69-93.
- Dasgupta, P., S. Marglin, and A. Sen (1972), *Guidelines for Project Evaluation* (New York: United Nations).
- El Serafy, S. (1989), "The Proper Calculation of Income from Depletable Natural Resources", in Y. Ahmad, S. El Sarafy, and E. Lutz, eds., *Environmental Accounting for Sustainable Development* (Washington, DC: World Bank).
- Hahn, F.H. (1970), "Savings and Uncertainty", *Review of Economic Studies*, 37, 21-24.
- Hamilton, K. and M. Clemens (1999), "Genuine Savings Rates in Developing Countries", *World Bank Economic Review*, 13, 333-56.
- Harsanyi, J.C. (1955), "Cardinal Welfare, Individualistic Ethics and Interpersonal Comparisons of Utility", *Journal of Political Economy*, 63, 309-21.

Hartwick, J. (1977), "Intergenerational Equity and the Investing of Rents from Exhaustible Resources", *American Economic Review*, 66, 972-74.

Hartwick, J. and A. Hageman (1993), "Economic Depreciation of Mineral Stocks and the Contribution of El Sarafy", in E. Lutz, ed., *Toward Improved Accounting for the Environment* (Washington, DC: World Bank).

Hicks, J.R. (1942), "Maintaining Capital Intact: A Further Suggestion", *Economica*, 9, 174-79.

IUCN (1980), *The World Conservation Strategy: Living Resource Conservation for Sustainable Development* (Geneva: International Union for the Conservation of Nature and Natural Resources).

Kurz, M. (1968), "Optimal Economic Growth and Wealth Effects", *International Economic Review*, 9, 348-57.

Levhari, D. and T.N. Srinivasan (1969), "Optimal Savings Under Uncertainty", *Review of Economic Studies*, 36, 153-63.

Lipset, S.M. (1959), "Some Social Requisites of Democracy: Economic Development and Political Legitimacy", *American Political Science Review*, 53, 69-105.

Little, I.M.D. and J.A. Mirrlees (1968), *Manual of Industrial Project Analysis in Developing Countries: Social Cost Benefit Analysis* (Paris: OECD).

Little, I.M.D. and J.A. Mirrlees (1974), *Project Appraisal and Planning for Developing Countries* (London: Heinemann).

Lutz, E., ed. (1993), *Toward Improved Accounting for the Environment* (Washington, DC: World Bank).

McKelvey, R. (1980), "Common Property and the Conservation of Natural Resources", in S.A. Levin, T.G. Hallam, and L.J. Gross, eds., *Applied Mathematical Ecology, 18: Biomathematics* (Berlin: Springer Verlag).

Murray, J.D. (1993), *Mathematical Biology* (Berlin: Springer-Verlag).

Nordhaus, W.D. and Z. Yang (1996), "A Regional Dynamic General-Equilibrium Model of Alternative Climate-Change Strategies", *American Economic Review*, 86, 741-65.

Pearce, D. and G. Atkinson (1993), "Capital Theory and the Measurement of Sustainable Development: An Indicator of Weak Sustainability", *Ecological Economics*, 8, 103-108.

Pearce, D., K. Hamilton, and G. Atkinson (1996), "Measuring Sustainable Development: Progress on Indicators", *Environment and Development Economics*, 1, 85-101.

Pezzey, J.C.V. (1992), "Sustainable Development Concepts: An Economic Analysis", World Bank Environment Paper No. 2, World Bank, Washington, DC.

Pezzey, J.C.V. and M.A. Toman (2002), "Progress and Problems in the Economics of Sustainability", in T. Tietenberg and H. Folmer, eds., *The International Yearbook of Environmental and Resource Economics 2002/2003* (Cheltenham, UK: Edward Elgar).

Portney, P.R. and J.P. Weyant, eds. (1999), *Discounting and Intergenerational Equity* (Washington, DC: Resources for the Future).

- Ramsey, F.P. (1928), "A Mathematical Theory of Saving", *Economic Journal*, 38, 543-49.
- Scheffer M. (1997), *The Ecology of Shallow Lakes* (New York: Chapman and Hall).
- Sefton, J. and M. Weale (1996), "The Net National Product and Exhaustible Resources: The Effects of Foreign Trade", *Journal of Public Economics*, 61, 21-48.
- Serageldin, I. (1995), "Are We Saving Enough for the Future?", in *Monitoring Environmental Progress, Report on Work in Progress, Environmentally Sustainable Development*, World Bank, Washington, D.C.
- Skiba, A.K. (1978), "Optimal Growth with a Convex-Concave Production Function", *Econometrica*, 46, 527-540.
- Solow, R.M. (1956), "A Contribution to the Theory of Economic Growth", *Quarterly Journal of Economics*, 70, 65-94.
- Solow, R.M. (1974), "Intergenerational Equity and Exhaustible Resources", *Review of Economic Studies*, 41 (Symposium Issue), 29-45.
- Tinbergen, J. (1954), *Centralization and Decentralization in Economic Policy* (Amsterdam: North Holland).
- Vincent, J.R., T. Panayotou, and J.M. Hartwick (1997), "Resource Depletion and Sustainability in Small Open Economies", *Journal of Environmental Economics and Management*, 33, 274-286.
- World Commission (1987), *Our Common Future* (New York: Oxford University Press).

## NOTE DI LAVORO DELLA FONDAZIONE ENI ENRICO MATTEI

### Fondazione Eni Enrico Mattei Working Paper Series

Our working papers are available on the Internet at the following addresses:

<http://www.feem.it/Feem/Pub/Publications/WPapers/default.html>

<http://papers.ssrn.com>

SUST	1.2002	<i>K. TANO, M.D. FAMINOW, M. KAMUANGA and B. SWALLOW: <u>Using Conjoint Analysis to Estimate Farmers' Preferences for Cattle Traits in West Africa</u></i>
ETA	2.2002	<i>Efrem CASTELNUOVO and Paolo SURICO: <u>What Does Monetary Policy Reveal about Central Bank's Preferences?</u></i>
WAT	3.2002	<i>Duncan KNOWLER and Edward BARBIER: <u>The Economics of a "Mixed Blessing" Effect: A Case Study of the Black Sea</u></i>
CLIM	4.2002	<i>Andreas LÖSCHEL: <u>Technological Change in Economic Models of Environmental Policy: A Survey</u></i>
VOL	5.2002	<i>Carlo CARRARO and Carmen MARCHIORI: <u>Stable Coalitions</u></i>
CLIM	6.2002	<i>Marzio GALEOTTI, Alessandro LANZA and Matteo MANERA: <u>Rockets and Feathers Revisited: An International Comparison on European Gasoline Markets</u></i>
ETA	7.2002	<i>Effrosyni DIAMANTOUDI and Efthios S. SARTZETAKIS: <u>Stable International Environmental Agreements: An Analytical Approach</u></i>
KNOW	8.2002	<i>Alain DESDOIGTS: <u>Neoclassical Convergence Versus Technological Catch-up: A Contribution for Reaching a Consensus</u></i>
NRM	9.2002	<i>Giuseppe DI VITA: <u>Renewable Resources and Waste Recycling</u></i>
KNOW	10.2002	<i>Giorgio BRUNELLO: <u>Is Training More Frequent when Wage Compression is Higher? Evidence from 11 European Countries</u></i>
ETA	11.2002	<i>Mordecai KURZ, Hehui JIN and Maurizio MOTOLESE: <u>Endogenous Fluctuations and the Role of Monetary Policy</u></i>
KNOW	12.2002	<i>Reyer GERLAGH and Marjan W. HOFKES: <u>Escaping Lock-in: The Scope for a Transition towards Sustainable Growth?</u></i>
NRM	13.2002	<i>Michele MORETTO and Paolo ROSATO: <u>The Use of Common Property Resources: A Dynamic Model</u></i>
CLIM	14.2002	<i>Philippe QUIRION: <u>Macroeconomic Effects of an Energy Saving Policy in the Public Sector</u></i>
CLIM	15.2002	<i>Roberto ROSON: <u>Dynamic and Distributional Effects of Environmental Revenue Recycling Schemes: Simulations with a General Equilibrium Model of the Italian Economy</u></i>
CLIM	16.2002	<i>Francesco RICCI (I): <u>Environmental Policy Growth when Inputs are Differentiated in Pollution Intensity</u></i>
ETA	17.2002	<i>Alberto PETRUCCI: <u>Devaluation (Levels versus Rates) and Balance of Payments in a Cash-in-Advance Economy</u></i>
Coalition Theory Network	18.2002	<i>László Á. KÓCZY (liv): <u>The Core in the Presence of Externalities</u></i>
Coalition Theory Network	19.2002	<i>Steven J. BRAMS, Michael A. JONES and D. Marc KILGOUR (liv): <u>Single-Peakedness and Disconnected Coalitions</u></i>
Coalition Theory Network	20.2002	<i>Guillaume HAERINGER (liv): <u>On the Stability of Cooperation Structures</u></i>
NRM	21.2002	<i>Fausto CAVALLARO and Luigi CIRAOLO: <u>Economic and Environmental Sustainability: A Dynamic Approach in Insular Systems</u></i>
CLIM	22.2002	<i>Barbara BUCHNER, Carlo CARRARO, Igor CERSOSIMO and Carmen MARCHIORI: <u>Back to Kyoto? US Participation and the Linkage between R&amp;D and Climate Cooperation</u></i>
CLIM	23.2002	<i>Andreas LÖSCHEL and ZhongXIANG ZHANG: <u>The Economic and Environmental Implications of the US Repudiation of the Kyoto Protocol and the Subsequent Deals in Bonn and Marrakech</u></i>
ETA	24.2002	<i>Marzio GALEOTTI, Louis J. MACCINI and Fabio SCHIANTARELLI: <u>Inventories, Employment and Hours</u></i>
CLIM	25.2002	<i>Hannes EGLI: <u>Are Cross-Country Studies of the Environmental Kuznets Curve Misleading? New Evidence from Time Series Data for Germany</u></i>
ETA	26.2002	<i>Adam B. JAFFE, Richard G. NEWELL and Robert N. STAVINS: <u>Environmental Policy and Technological Change</u></i>
SUST	27.2002	<i>Joseph C. COOPER and Giovanni SIGNORELLO: <u>Farmer Premiums for the Voluntary Adoption of Conservation Plans</u></i>
SUST	28.2002	<i><u>The ANSEA Network: Towards An Analytical Strategic Environmental Assessment</u></i>
KNOW	29.2002	<i>Paolo SURICO: <u>Geographic Concentration and Increasing Returns: a Survey of Evidence</u></i>
ETA	30.2002	<i>Robert N. STAVINS: <u>Lessons from the American Experiment with Market-Based Environmental Policies</u></i>

NRM	31.2002	<i>Carlo GIUPPONI and Paolo ROSATO: <u>Multi-Criteria Analysis and Decision-Support for Water Management at the Catchment Scale: An Application to Diffuse Pollution Control in the Venice Lagoon</u></i>
NRM	32.2002	<i>Robert N. STAVINS: <u>National Environmental Policy During the Clinton Years</u></i>
KNOW	33.2002	<i>A. SOUBEYRAN and H. STAHN : <u>Do Investments in Specialized Knowledge Lead to Composite Good Industries?</u></i>
KNOW	34.2002	<i>G. BRUNELLO, M.L. PARISI and Daniela SONEDDA: <u>Labor Taxes, Wage Setting and the Relative Wage Effect</u></i>
CLIM	35.2002	<i>C. BOEMARE and P. QUIRION (lv): <u>Implementing Greenhouse Gas Trading in Europe: Lessons from Economic Theory and International Experiences</u></i>
CLIM	36.2002	<i>T. TIETENBERG (lv): <u>The Tradable Permits Approach to Protecting the Commons: What Have We Learned?</u></i>
CLIM	37.2002	<i>K. REHDANZ and R.J.S. TOL (lv): <u>On National and International Trade in Greenhouse Gas Emission Permits</u></i>
CLIM	38.2002	<i>C. FISCHER (lv): <u>Multinational Taxation and International Emissions Trading</u></i>
SUST	39.2002	<i>G. SIGNORELLO and G. PAPPALARDO: <u>Farm Animal Biodiversity Conservation Activities in Europe under the Framework of Agenda 2000</u></i>
NRM	40.2002	<i>S.M. CAVANAGH, W. M. HANEMANN and R. N. STAVINS: <u>Muffled Price Signals: Household Water Demand under Increasing-Block Prices</u></i>
NRM	41.2002	<i>A. J. PLANTINGA, R. N. LUBOWSKI and R. N. STAVINS: <u>The Effects of Potential Land Development on Agricultural Land Prices</u></i>
CLIM	42.2002	<i>C. OHL (lvi): <u>Inducing Environmental Co-operation by the Design of Emission Permits</u></i>
CLIM	43.2002	<i>J. EYCKMANS, D. VAN REGEMORTER and V. VAN STEENBERGHE (lvi): <u>Is Kyoto Fatally Flawed? An Analysis with MacGEM</u></i>
CLIM	44.2002	<i>A. ANTOCI and S. BORGHESI (lvi): <u>Working Too Much in a Polluted World: A North-South Evolutionary Model</u></i>
ETA	45.2002	<i>P. G. FREDRIKSSON, Johan A. LIST and Daniel MILLIMET (lvi): <u>Chasing the Smokestack: Strategic Policymaking with Multiple Instruments</u></i>
ETA	46.2002	<i>Z. YU (lvi): <u>A Theory of Strategic Vertical DFI and the Missing Pollution-Haven Effect</u></i>
SUST	47.2002	<i>Y. H. FARZIN: <u>Can an Exhaustible Resource Economy Be Sustainable?</u></i>
SUST	48.2002	<i>Y. H. FARZIN: <u>Sustainability and Hamiltonian Value</u></i>
KNOW	49.2002	<i>C. PIGA and M. VIVARELLI: <u>Cooperation in R&amp;D and Sample Selection</u></i>
Coalition Theory Network Coalition Theory Network	50.2002	<i>M. SERTEL and A. SLINKO (liv): <u>Ranking Committees, Words or Multisets</u></i>
ETA	51.2002	<i>Sergio CURRARINI (liv): <u>Stable Organizations with Externalities</u></i>
ETA	52.2002	<i>Robert N. STAVINS: <u>Experience with Market-Based Policy Instruments</u></i>
ETA	53.2002	<i>C.C. JAEGER, M. LEIMBACH, C. CARRARO, K. HASSELMANN, J.C. HOURCADE, A. KEELER and R. KLEIN (liii): <u>Integrated Assessment Modeling: Modules for Cooperation</u></i>
CLIM	54.2002	<i>Scott BARRETT (liii): <u>Towards a Better Climate Treaty</u></i>
ETA	55.2002	<i>Richard G. NEWELL and Robert N. STAVINS: <u>Cost Heterogeneity and the Potential Savings from Market-Based Policies</u></i>
SUST	56.2002	<i>Paolo ROSATO and Edi DEFRANCESCO: <u>Individual Travel Cost Method and Flow Fixed Costs</u></i>
SUST	57.2002	<i>Vladimir KOTOV and Elena NIKITINA (lvii): <u>Reorganisation of Environmental Policy in Russia: The Decade of Success and Failures in Implementation of Perspective Quests</u></i>
SUST	58.2002	<i>Vladimir KOTOV (lvii): <u>Policy in Transition: New Framework for Russia's Climate Policy</u></i>
SUST	59.2002	<i>Fanny MISSFELDT and Arturo VILLAVICENCO (lvii): <u>How Can Economies in Transition Pursue Emissions Trading or Joint Implementation?</u></i>
VOL	60.2002	<i>Giovanni DI BARTOLOMEO, Jacob ENGWERDA, Joseph PLASMANS and Bas VAN AARLE: <u>Staying Together or Breaking Apart: Policy-Makers' Endogenous Coalitions Formation in the European Economic and Monetary Union</u></i>
ETA	61.2002	<i>Robert N. STAVINS, Alexander F. WAGNER and Gernot WAGNER: <u>Interpreting Sustainability in Economic Terms: Dynamic Efficiency Plus Intergenerational Equity</u></i>
PRIV	62.2002	<i>Carlo CAPUANO: <u>Demand Growth, Entry and Collusion Sustainability</u></i>
PRIV	63.2002	<i>Federico MUNARI and Raffaele ORIANI: <u>Privatization and R&amp;D Performance: An Empirical Analysis Based on Tobin's Q</u></i>
PRIV	64.2002	<i>Federico MUNARI and Maurizio SOBRERO: <u>The Effects of Privatization on R&amp;D Investments and Patent Productivity</u></i>
SUST	65.2002	<i>Orley ASHENFELTER and Michael GREENSTONE: <u>Using Mandated Speed Limits to Measure the Value of a Statistical Life</u></i>
ETA	66.2002	<i>Paolo SURICO: <u>US Monetary Policy Rules: the Case for Asymmetric Preferences</u></i>
PRIV	67.2002	<i>Rinaldo BRAU and Massimo FLORIO: <u>Privatisations as Price Reforms: Evaluating Consumers' Welfare Changes in the U.K.</u></i>
CLIM	68.2002	<i>Barbara K. BUCHNER and Roberto ROSON: <u>Conflicting Perspectives in Trade and Environmental Negotiations</u></i>
CLIM	69.2002	<i>Philippe QUIRION: <u>Complying with the Kyoto Protocol under Uncertainty: Taxes or Tradable Permits?</u></i>
SUST	70.2002	<i>Anna ALBERINI, Patrizia RIGANTI and Alberto LONGO: <u>Can People Value the Aesthetic and Use Services of Urban Sites? Evidence from a Survey of Belfast Residents</u></i>
SUST	71.2002	<i>Marco PERCOCO: <u>Discounting Environmental Effects in Project Appraisal</u></i>

NRM	72.2002	<i>Philippe BONTEMS and Pascal FAVARD: <u>Input Use and Capacity Constraint under Uncertainty: The Case of Irrigation</u></i>
PRIV	73.2002	<i>Mohammed OMRAN: <u>The Performance of State-Owned Enterprises and Newly Privatized Firms: Empirical Evidence from Egypt</u></i>
PRIV	74.2002	<i>Mike BURKART, Fausto PANUNZI and Andrei SHLEIFER: <u>Family Firms</u></i>
PRIV	75.2002	<i>Emmanuelle AURIOL, Pierre M. PICARD: <u>Privatizations in Developing Countries and the Government Budget Constraint</u></i>
PRIV	76.2002	<i>Nichole M. CASTATER: <u>Privatization as a Means to Societal Transformation: An Empirical Study of Privatization in Central and Eastern Europe and the Former Soviet Union</u></i>
PRIV	77.2002	<i>Christoph LÜLSFESMANN: <u>Benevolent Government, Managerial Incentives, and the Virtues of Privatization</u></i>
PRIV	78.2002	<i>Kate BISHOP, Igor FILATOTCHEV and Tomasz MICKIEWICZ: <u>Endogenous Ownership Structure: Factors Affecting the Post-Privatisation Equity in Largest Hungarian Firms</u></i>
PRIV	79.2002	<i>Theodora WELCH and Rick MOLZ: <u>How Does Trade Sale Privatization Work? Evidence from the Fixed-Line Telecommunications Sector in Developing Economies</u></i>
PRIV	80.2002	<i>Alberto R. PETRUCCI: <u>Government Debt, Agent Heterogeneity and Wealth Displacement in a Small Open Economy</u></i>
CLIM	81.2002	<i>Timothy SWANSON and Robin MASON (Ivi): <u>The Impact of International Environmental Agreements: The Case of the Montreal Protocol</u></i>
PRIV	82.2002	<i>George R.G. CLARKE and Lixin Colin XU: <u>Privatization, Competition and Corruption: How Characteristics of Bribe Takers and Payers Affect Bribe Payments to Utilities</u></i>
PRIV	83.2002	<i>Massimo FLORIO and Katuscia MANZONI: <u>The Abnormal Returns of UK Privatisations: From Underpricing to Outperformance</u></i>
NRM	84.2002	<i>Nelson LOURENÇO, Carlos RUSSO MACHADO, Maria do ROSÁRIO JORGE and Luis RODRIGUES: <u>An Integrated Approach to Understand Territory Dynamics. The Coastal Alentejo (Portugal)</u></i>
CLIM	85.2002	<i>Peter ZAPFEL and Matti VAINIO (Iv): <u>Pathways to European Greenhouse Gas Emissions Trading History and Misconceptions</u></i>
CLIM	86.2002	<i>Pierre COURTOIS: <u>Influence Processes in Climate Change Negotiations: Modelling the Rounds</u></i>
ETA	87.2002	<i>Vito FRAGNELLI and Maria Erminia MARINA (Iviii): <u>Environmental Pollution Risk and Insurance</u></i>
ETA	88.2002	<i>Laurent FRANCKX (Iviii): <u>Environmental Enforcement with Endogenous Ambient Monitoring</u></i>
ETA	89.2002	<i>Timo GOESCHL and Timothy M. SWANSON (Iviii): <u>Lost Horizons. The noncooperative management of an evolutionary biological system.</u></i>
ETA	90.2002	<i>Hans KEIDING (Iviii): <u>Environmental Effects of Consumption: An Approach Using DEA and Cost Sharing</u></i>
ETA	91.2002	<i>Wietze LISE (Iviii): <u>A Game Model of People's Participation in Forest Management in Northern India</u></i>
CLIM	92.2002	<i>Jens HORBACH: <u>Structural Change and Environmental Kuznets Curves</u></i>
ETA	93.2002	<i>Martin P. GROSSKOPF: <u>Towards a More Appropriate Method for Determining the Optimal Scale of Production Units</u></i>
VOL	94.2002	<i>Scott BARRETT and Robert STAVINS: <u>Increasing Participation and Compliance in International Climate Change Agreements</u></i>
CLIM	95.2002	<i>Banu BAYRAMOGLU LISE and Wietze LISE: <u>Climate Change, Environmental NGOs and Public Awareness in the Netherlands: Perceptions and Reality</u></i>
CLIM	96.2002	<i>Matthieu GLACHANT: <u>The Political Economy of Emission Tax Design in Environmental Policy</u></i>
KNOW	97.2002	<i>Kenn ARIGA and Giorgio BRUNELLO: <u>Are the More Educated Receiving More Training? Evidence from Thailand</u></i>
ETA	98.2002	<i>Gianfranco FORTE and Matteo MANERA: <u>Forecasting Volatility in European Stock Markets with Non-linear GARCH Models</u></i>
ETA	99.2002	<i>Geoffrey HEAL: <u>Bundling Biodiversity</u></i>
ETA	100.2002	<i>Geoffrey HEAL, Brian WALKER, Simon LEVIN, Kenneth ARROW, Partha DASGUPTA, Gretchen DAILY, Paul EHRlich, Karl-Goran MALER, Nils KAUTSKY, Jane LUBCHENCO, Steve SCHNEIDER and David STARRETT: <u>Genetic Diversity and Interdependent Crop Choices in Agriculture</u></i>
ETA	101.2002	<i>Geoffrey HEAL: <u>Biodiversity and Globalization</u></i>
VOL	102.2002	<i>Andreas LANGE: <u>Heterogeneous International Agreements – If per capita emission levels matter</u></i>
ETA	103.2002	<i>Pierre-André JOUVET and Walid OUESLATI: <u>Tax Reform and Public Spending Trade-offs in an Endogenous Growth Model with Environmental Externality</u></i>
ETA	104.2002	<i>Anna BOTTASSO and Alessandro SEMBENELLI: <u>Does Ownership Affect Firms' Efficiency? Panel Data Evidence on Italy</u></i>
PRIV	105.2002	<i>Bernardo BORTOLOTTI, Frank DE JONG, Giovanna NICODANO and Ibolya SCHINDELE: <u>Privatization and Stock Market Liquidity</u></i>
ETA	106.2002	<i>Haruo IMAI and Mayumi HORIE (Iviii): <u>Pre-Negotiation for an International Emission Reduction Game</u></i>
PRIV	107.2002	<i>Sudeshna GHOSH BANERJEE and Michael C. MUNGER: <u>Move to Markets? An Empirical Analysis of Privatisation in Developing Countries</u></i>
PRIV	108.2002	<i>Guillaume GIRMENS and Michel GUILLARD: <u>Privatization and Investment: Crowding-Out Effect vs Financial Diversification</u></i>
PRIV	109.2002	<i>Alberto CHONG and Florencio LÓPEZ-DE-SILANES: <u>Privatization and Labor Force Restructuring Around the World</u></i>
PRIV	110.2002	<i>Nandini GUPTA: <u>Partial Privatization and Firm Performance</u></i>
PRIV	111.2002	<i>François DEGEORGE, Dirk JENTER, Alberto MOEL and Peter TUFANO: <u>Selling Company Shares to Reluctant Employees: France Telecom's Experience</u></i>



PRIV	112.2002	<i>Isaac OTCHERE</i> : <u>Intra-Industry Effects of Privatization Announcements: Evidence from Developed and Developing Countries</u>
PRIV	113.2002	<i>Yannis KATSOULAKOS and Elissavet LIKOYANNI</i> : <u>Fiscal and Other Macroeconomic Effects of Privatization</u>
PRIV	114.2002	<i>Guillaume GIRMENS</i> : <u>Privatization, International Asset Trade and Financial Markets</u>
PRIV	115.2002	<i>D. Teja FLOTHO</i> : <u>A Note on Consumption Correlations and European Financial Integration</u>
PRIV	116.2002	<i>Ibolya SCHINDELE and Enrico C. PEROTTI</i> : <u>Pricing Initial Public Offerings in Premature Capital Markets: The Case of Hungary</u>
PRIV	1.2003	<i>Gabriella CHIESA and Giovanna NICODANO</i> : <u>Privatization and Financial Market Development: Theoretical Issues</u>
PRIV	2.2003	<i>Ibolya SCHINDELE</i> : <u>Theory of Privatization in Eastern Europe: Literature Review</u>
PRIV	3.2003	<i>Wietze LISE, Claudia KEMFERT and Richard S.J. TOL</i> : <u>Strategic Action in the Liberalised German Electricity Market</u>
CLIM	4.2003	<i>Laura MARSILIANI and Thomas I. RENSTRÖM</i> : <u>Environmental Policy and Capital Movements: The Role of Government Commitment</u>
KNOW	5.2003	<i>Reyer GERLAGH</i> : <u>Induced Technological Change under Technological Competition</u>
ETA	6.2003	<i>Efrem CASTELNUOVO</i> : <u>Squeezing the Interest Rate Smoothing Weight with a Hybrid Expectations Model</u>
SIEV	7.2003	<i>Anna ALBERINI, Alberto LONGO, Stefania TONIN, Francesco TROMBETTA and Margherita TURVANI</i> : <u>The Role of Liability, Regulation and Economic Incentives in Brownfield Remediation and Redevelopment: Evidence from Surveys of Developers</u>
NRM	8.2003	<i>Elissaios POPYRAKIS and Reyer GERLAGH</i> : <u>Natural Resources: A Blessing or a Curse?</u>
CLIM	9.2003	<i>A. CAPARRÓS, J.-C. PEREAU and T. TAZDAÏT</i> : <u>North-South Climate Change Negotiations: a Sequential Game with Asymmetric Information</u>
KNOW	10.2003	<i>Giorgio BRUNELLO and Daniele CHECCHI</i> : <u>School Quality and Family Background in Italy</u>
CLIM	11.2003	<i>Efrem CASTELNUOVO and Marzio GALEOTTI</i> : <u>Learning By Doing vs Learning By Researching in a Model of Climate Change Policy Analysis</u>
KNOW	12.2003	<i>Carole MAIGNAN, Gianmarco OTTAVIANO and Dino PINELLI (eds.)</i> : <u>Economic Growth, Innovation, Cultural Diversity: What are we all talking about? A critical survey of the state-of-the-art</u>
KNOW	13.2003	<i>Carole MAIGNAN, Gianmarco OTTAVIANO, Dino PINELLI and Francesco RULLANI (lix)</i> : <u>Bio-Ecological Diversity vs. Socio-Economic Diversity. A Comparison of Existing Measures</u>
KNOW	14.2003	<i>Maddy JAASSENS and Chris STEYAERT (lix)</i> : <u>Theories of Diversity within Organisation Studies: Debates and Future Trajectories</u>
KNOW	15.2003	<i>Tuzin BAYCAN LEVENT, Enno MASUREL and Peter NIJKAMP (lix)</i> : <u>Diversity in Entrepreneurship: Ethnic and Female Roles in Urban Economic Life</u>
KNOW	16.2003	<i>Alexandra BITUSIKOVA (lix)</i> : <u>Post-Communist City on its Way from Grey to Colourful: The Case Study from Slovakia</u>
KNOW	17.2003	<i>Billy E. VAUGHN and Katarina MLEKOV (lix)</i> : <u>A Stage Model of Developing an Inclusive Community</u>
KNOW	18.2003	<i>Selma van LONDEN and Arie de RUIJTER (lix)</i> : <u>Managing Diversity in a Globalizing World</u>
Coalition Theory Network	19.2003	<i>Sergio CURRARINI</i> : <u>On the Stability of Hierarchies in Games with Externalities</u>
PRIV	20.2003	<i>Giacomo CALZOLARI and Alessandro PAVAN (lx)</i> : <u>Monopoly with Resale</u>
PRIV	21.2003	<i>Claudio MEZZETTI (lx)</i> : <u>Auction Design with Interdependent Valuations: The Generalized Revelation Principle, Efficiency, Full Surplus Extraction and Information Acquisition</u>
PRIV	22.2003	<i>Marco LiCalzi and Alessandro PAVAN (lx)</i> : <u>Tilting the Supply Schedule to Enhance Competition in Uniform-Price Auctions</u>
PRIV	23.2003	<i>David ETTINGER (lx)</i> : <u>Bidding among Friends and Enemies</u>
PRIV	24.2003	<i>Hannu VARTAINEN (lx)</i> : <u>Auction Design without Commitment</u>
PRIV	25.2003	<i>Matti KELOHARJU, Kjell G. NYBORG and Kristian RYDQVIST (lx)</i> : <u>Strategic Behavior and Underpricing in Uniform Price Auctions: Evidence from Finnish Treasury Auctions</u>
PRIV	26.2003	<i>Christine A. PARLOUR and Uday RAJAN (lx)</i> : <u>Rationing in IPOs</u>
PRIV	27.2003	<i>Kjell G. NYBORG and Ilya A. STREBULAEV (lx)</i> : <u>Multiple Unit Auctions and Short Squeezes</u>
PRIV	28.2003	<i>Anders LUNANDER and Jan-Eric NILSSON (lx)</i> : <u>Taking the Lab to the Field: Experimental Tests of Alternative Mechanisms to Procure Multiple Contracts</u>
PRIV	29.2003	<i>TangaMcDANIEL and Karsten NEUHOFF (lx)</i> : <u>Use of Long-term Auctions for Network Investment</u>
PRIV	30.2003	<i>Emiel MAASLAND and Sander ONDERSTAL (lx)</i> : <u>Auctions with Financial Externalities</u>
ETA	31.2003	<i>Michael FINUS and Bianca RUNDSHAGEN</i> : <u>A Non-cooperative Foundation of Core-Stability in Positive Externality NTU-Coalition Games</u>
KNOW	32.2003	<i>Michele MORETTO</i> : <u>Competition and Irreversible Investments under Uncertainty</u>
PRIV	33.2003	<i>Philippe QUIRION</i> : <u>Relative Quotas: Correct Answer to Uncertainty or Case of Regulatory Capture?</u>
KNOW	34.2003	<i>Giuseppe MEDA, Claudio PIGA and Donald SIEGEL</i> : <u>On the Relationship between R&amp;D and Productivity: A Treatment Effect Analysis</u>
ETA	35.2003	<i>Alessandra DEL BOCA, Marzio GALEOTTI and Paola ROTA</i> : <u>Non-convexities in the Adjustment of Different Capital Inputs: A Firm-level Investigation</u>

GG	36.2003	<i>Matthieu GLACHANT</i> : <u>Voluntary Agreements under Endogenous Legislative Threats</u>
PRIV	37.2003	<i>Narjess BOUBAKRI, Jean-Claude COSSET and Omrane GUEDHAM</i> : <u>Postprivatization Corporate Governance: the Role of Ownership Structure and Investor Protection</u>
CLIM	38.2003	<i>Rolf GOLOMBEK and Michael HOEL</i> : <u>Climate Policy under Technology Spillovers</u>
KNOW	39.2003	<i>Slim BEN YOUSSEF</i> : <u>Transboundary Pollution, R&amp;D Spillovers and International Trade</u>
CTN	40.2003	<i>Carlo CARRARO and Carmen MARCHIORI</i> : <u>Endogenous Strategic Issue Linkage in International Negotiations</u>
KNOW	41.2003	<i>Sonia OREFFICE</i> : <u>Abortion and Female Power in the Household: Evidence from Labor Supply</u>
KNOW	42.2003	<i>Timo GOESCHL and Timothy SWANSON</i> : <u>On Biology and Technology: The Economics of Managing Biotechnologies</u>
ETA	43.2003	<i>Giorgio Busetti and Matteo MANERA</i> : <u>STAR-GARCH Models for Stock Market Interactions in the Pacific Basin Region, Japan and US</u>
CLIM	44.2003	<i>Katrin MILLOCK and Céline NAUGES</i> : <u>The French Tax on Air Pollution: Some Preliminary Results on its Effectiveness</u>
PRIV	45.2003	<i>Bernardo BORTOLOTTI and Paolo PINOTTI</i> : <u>The Political Economy of Privatization</u>
SIEV	46.2003	<i>Elbert DIJKGRAAF and Herman R.J. VOLLEBERGH</i> : <u>Burn or Bury? A Social Cost Comparison of Final Waste Disposal Methods</u>
ETA	47.2003	<i>Jens HORBACH</i> : <u>Employment and Innovations in the Environmental Sector: Determinants and Econometrical Results for Germany</u>
CLIM	48.2003	<i>Lori SNYDER, Nolan MILLER and Robert STAVINS</i> : <u>The Effects of Environmental Regulation on Technology Diffusion: The Case of Chlorine Manufacturing</u>
CLIM	49.2003	<i>Lori SNYDER, Robert STAVINS and Alexander F. WAGNER</i> : <u>Private Options to Use Public Goods. Exploiting Revealed Preferences to Estimate Environmental Benefits</u>
CTN	50.2003	<i>László Á. KÓCZY and Luc LAUWERS (Ixi)</i> : <u>The Minimal Dominant Set is a Non-Empty Core-Extension</u>
CTN	51.2003	<i>Matthew O. JACKSON (Ixi)</i> : <u>Allocation Rules for Network Games</u>
CTN	52.2003	<i>Ana MAULEON and Vincent VANNEBELBOSCH (Ixi)</i> : <u>Farsightedness and Cautiousness in Coalition Formation</u>
CTN	53.2003	<i>Fernando VEGA-REDONDO (Ixi)</i> : <u>Building Up Social Capital in a Changing World: a network approach</u>
CTN	54.2003	<i>Matthew HAAG and Roger LAGUNOFF (Ixi)</i> : <u>On the Size and Structure of Group Cooperation</u>
CTN	55.2003	<i>Taiji FURUSAWA and Hideo KONISHI (Ixi)</i> : <u>Free Trade Networks</u>
CTN	56.2003	<i>Halis Murat YILDIZ (Ixi)</i> : <u>National Versus International Mergers and Trade Liberalization</u>
CTN	57.2003	<i>Santiago RUBIO and Alistair ULPH (Ixi)</i> : <u>An Infinite-Horizon Model of Dynamic Membership of International Environmental Agreements</u>
KNOW	58.2003	<i>Carole MAIGNAN, Dino PINELLI and Gianmarco I.P. OTTAVIANO</i> : <u>ICT, Clusters and Regional Cohesion: A Summary of Theoretical and Empirical Research</u>
KNOW	59.2003	<i>Giorgio BELLETTINI and Gianmarco I.P. OTTAVIANO</i> : <u>Special Interests and Technological Change</u>
ETA	60.2003	<i>Ronnie SCHÖB</i> : <u>The Double Dividend Hypothesis of Environmental Taxes: A Survey</u>
CLIM	61.2003	<i>Michael FINUS, Ekko van IERLAND and Robert DELLINK</i> : <u>Stability of Climate Coalitions in a Cartel Formation Game</u>
GG	62.2003	<i>Michael FINUS and Bianca RUNDSHAGEN</i> : <u>How the Rules of Coalition Formation Affect Stability of International Environmental Agreements</u>
SIEV	63.2003	<i>Alberto PETRUCCI</i> : <u>Taxing Land Rent in an Open Economy</u>
CLIM	64.2003	<i>Joseph E. ALDY, Scott BARRETT and Robert N. STAVINS</i> : <u>Thirteen Plus One: A Comparison of Global Climate Policy Architectures</u>
SIEV	65.2003	<i>Edi DEFRANCESCO</i> : <u>The Beginning of Organic Fish Farming in Italy</u>
SIEV	66.2003	<i>Klaus CONRAD</i> : <u>Price Competition and Product Differentiation when Consumers Care for the Environment</u>
SIEV	67.2003	<i>Paulo A.L.D. NUNES, Luca ROSSETTO, Arianne DE BLAEIJ</i> : <u>Monetary Value Assessment of Clam Fishing Management Practices in the Venice Lagoon: Results from a Stated Choice Exercise</u>
CLIM	68.2003	<i>ZhongXiang ZHANG</i> : <u>Open Trade with the U.S. Without Compromising Canada's Ability to Comply with its Kyoto Target</u>
KNOW	69.2003	<i>David FRANTZ (Iix)</i> : <u>Lorenzo Market between Diversity and Mutation</u>
KNOW	70.2003	<i>Ercole SORI (Iix)</i> : <u>Mapping Diversity in Social History</u>
KNOW	71.2003	<i>Ljiljana DERU SIMIC (Iixii)</i> : <u>What is Specific about Art/Cultural Projects?</u>
KNOW	72.2003	<i>Natalya V. TARANOVA (Iixii)</i> : <u>The Role of the City in Fostering Intergroup Communication in a Multicultural Environment: Saint-Petersburg's Case</u>
KNOW	73.2003	<i>Kristine CRANE (Iixii)</i> : <u>The City as an Arena for the Expression of Multiple Identities in the Age of Globalisation and Migration</u>
KNOW	74.2003	<i>Kazuma MATOBA (Iixii)</i> : <u>Glocal Dialogue- Transformation through Transcultural Communication</u>
KNOW	75.2003	<i>Catarina REIS OLIVEIRA (Iixii)</i> : <u>Immigrants' Entrepreneurial Opportunities: The Case of the Chinese in Portugal</u>
KNOW	76.2003	<i>Sandra WALLMAN (Iixii)</i> : <u>The Diversity of Diversity - towards a typology of urban systems</u>

KNOW	77.2003	<i>Richard PEARCE</i> (Ixii): <u>A Biologist's View of Individual Cultural Identity for the Study of Cities</u>
KNOW	78.2003	<i>Vincent MERK</i> (Ixii): <u>Communication Across Cultures: from Cultural Awareness to Reconciliation of the Dilemmas</u>
KNOW	79.2003	<i>Giorgio BELLETTINI, Carlotta BERTI CERONI and Gianmarco I.P. OTTAVIANO</i> : <u>Child Labor and Resistance to Change</u>
ETA	80.2003	<i>Michele MORETTO, Paolo M. PANTEGHINI and Carlo SCARPA</i> : <u>Investment Size and Firm's Value under Profit Sharing Regulation</u>
IEM	81.2003	<i>Alessandro LANZA, Matteo MANERA and Massimo GIOVANNINI</i> : <u>Oil and Product Dynamics in International Petroleum Markets</u>
CLIM	82.2003	<i>Y. Hossein FARZIN and Jinhua ZHAO</i> : <u>Pollution Abatement Investment When Firms Lobby Against Environmental Regulation</u>
CLIM	83.2003	<i>Giuseppe DI VITA</i> : <u>Is the Discount Rate Relevant in Explaining the Environmental Kuznets Curve?</u>
CLIM	84.2003	<i>Reyer GERLAGH and Wietze LISE</i> : <u>Induced Technological Change Under Carbon Taxes</u>
NRM	85.2003	<i>Rinaldo BRAU, Alessandro LANZA and Francesco PIGLIARU</i> : <u>How Fast are the Tourism Countries Growing? The cross-country evidence</u>
KNOW	86.2003	<i>Elena BELLINI, Gianmarco I.P. OTTAVIANO and Dino PINELLI</i> : <u>The ICT Revolution: opportunities and risks for the Mezzogiorno</u>
SIEV	87.2003	<i>Lucas BRETSCHGER and Sjak SMULDERS</i> : <u>Sustainability and Substitution of Exhaustible Natural Resources. How resource prices affect long-term R&amp;D investments</u>
CLIM	88.2003	<i>Johan EYCKMANS and Michael FINUS</i> : <u>New Roads to International Environmental Agreements: The Case of Global Warming</u>
CLIM	89.2003	<i>Marzio GALEOTTI</i> : <u>Economic Development and Environmental Protection</u>
CLIM	90.2003	<i>Marzio GALEOTTI</i> : <u>Environment and Economic Growth: Is Technical Change the Key to Decoupling?</u>
CLIM	91.2003	<i>Marzio GALEOTTI and Barbara BUCHNER</i> : <u>Climate Policy and Economic Growth in Developing Countries</u>
IEM	92.2003	<i>A. MARKANDYA, A. GOLUB and E. STRUKOVA</i> : <u>The Influence of Climate Change Considerations on Energy Policy: The Case of Russia</u>
ETA	93.2003	<i>Andrea BELTRATTI</i> : <u>Socially Responsible Investment in General Equilibrium</u>
CTN	94.2003	<i>Parkash CHANDER</i> : <u>The <math>\gamma</math>-Core and Coalition Formation</u>
IEM	95.2003	<i>Matteo MANERA and Angelo MARZULLO</i> : <u>Modelling the Load Curve of Aggregate Electricity Consumption Using Principal Components</u>
IEM	96.2003	<i>Alessandro LANZA, Matteo MANERA, Margherita GRASSO and Massimo GIOVANNINI</i> : <u>Long-run Models of Oil Stock Prices</u>
CTN	97.2003	<i>Steven J. BRAMS, Michael A. JONES, and D. Marc KILGOUR</i> : <u>Forming Stable Coalitions: The Process Matters</u>
KNOW	98.2003	<i>John CROWLEY, Marie-Cecile NAVES</i> (Ixiii): <u>Anti-Racist Policies in France. From Ideological and Historical Schemes to Socio-Political Realities</u>
KNOW	99.2003	<i>Richard THOMPSON FORD</i> (Ixiii): <u>Cultural Rights and Civic Virtue</u>
KNOW	100.2003	<i>Alaknanda PATEL</i> (Ixiii): <u>Cultural Diversity and Conflict in Multicultural Cities</u>
KNOW	101.2003	<i>David MAY</i> (Ixiii): <u>The Struggle of Becoming Established in a Deprived Inner-City Neighbourhood</u>
KNOW	102.2003	<i>Sébastien ARCAND, Danielle JUTEAU, Sirma BILGE, and Francine LEMIRE</i> (Ixiii) : <u>Municipal Reform on the Island of Montreal: Tensions Between Two Majority Groups in a Multicultural City</u>
CLIM	103.2003	<i>Barbara BUCHNER and Carlo CARRARO</i> : <u>China and the Evolution of the Present Climate Regime</u>
CLIM	104.2003	<i>Barbara BUCHNER and Carlo CARRARO</i> : <u>Emissions Trading Regimes and Incentives to Participate in International Climate Agreements</u>
CLIM	105.2003	<i>Anil MARKANDYA and Dirk T.G. RÜBBELKE</i> : <u>Ancillary Benefits of Climate Policy</u>
NRM	106.2003	<i>Anne Sophie CRÉPIN</i> (Ixiv): <u>Management Challenges for Multiple-Species Boreal Forests</u>
NRM	107.2003	<i>Anne Sophie CRÉPIN</i> (Ixiv): <u>Threshold Effects in Coral Reef Fisheries</u>
SIEV	108.2003	<i>Sara ANIYAR</i> (Ixiv): <u>Estimating the Value of Oil Capital in a Small Open Economy: The Venezuela's Example</u>
SIEV	109.2003	<i>Kenneth ARROW, Partha DASGUPTA and Karl-Göran MÅLER</i> (Ixiv): <u>Evaluating Projects and Assessing Sustainable Development in Imperfect Economies</u>
	<b>1000</b>	<b>Carlo CARRARO, Alessandro LANZA and Valeria PAPPONETTI: <u>One Thousand Working Papers</u></b>

- (l) This paper was presented at the Workshop “Growth, Environmental Policies and Sustainability” organised by the Fondazione Eni Enrico Mattei, Venice, June 1, 2001
- (li) This paper was presented at the Fourth Toulouse Conference on Environment and Resource Economics on “Property Rights, Institutions and Management of Environmental and Natural Resources”, organised by Fondazione Eni Enrico Mattei, IDEI and INRA and sponsored by MATE, Toulouse, May 3-4, 2001
- (lii) This paper was presented at the International Conference on “Economic Valuation of Environmental Goods”, organised by Fondazione Eni Enrico Mattei in cooperation with CORILA, Venice, May 11, 2001
- (liii) This paper was circulated at the International Conference on “Climate Policy – Do We Need a New Approach?”, jointly organised by Fondazione Eni Enrico Mattei, Stanford University and Venice International University, Isola di San Servolo, Venice, September 6-8, 2001
- (liv) This paper was presented at the Seventh Meeting of the Coalition Theory Network organised by the Fondazione Eni Enrico Mattei and the CORE, Université Catholique de Louvain, Venice, Italy, January 11-12, 2002
- (lv) This paper was presented at the First Workshop of the Concerted Action on Tradable Emission Permits (CATEP) organised by the Fondazione Eni Enrico Mattei, Venice, Italy, December 3-4, 2001
- (lvi) This paper was presented at the ESF EURESCO Conference on Environmental Policy in a Global Economy “The International Dimension of Environmental Policy”, organised with the collaboration of the Fondazione Eni Enrico Mattei, Acquafredda di Maratea, October 6-11, 2001
- (lvii) This paper was presented at the First Workshop of “CFEWE – Carbon Flows between Eastern and Western Europe”, organised by the Fondazione Eni Enrico Mattei and Zentrum für Europäische Integrationsforschung (ZEI), Milan, July 5-6, 2001
- (lviii) This paper was presented at the Workshop on “Game Practice and the Environment”, jointly organised by Università del Piemonte Orientale and Fondazione Eni Enrico Mattei, Alessandria, April 12-13, 2002
- (lix) This paper was presented at the ENGIME Workshop on “Mapping Diversity”, Leuven, May 16-17, 2002
- (lx) This paper was presented at the EuroConference on “Auctions and Market Design: Theory, Evidence and Applications”, organised by the Fondazione Eni Enrico Mattei, Milan, September 26-28, 2002
- (lxi) This paper was presented at the Eighth Meeting of the Coalition Theory Network organised by the GREQAM, Aix-en-Provence, France, January 24-25, 2003
- (lxii) This paper was presented at the ENGIME Workshop on “Communication across Cultures in Multicultural Cities”, The Hague, November 7-8, 2002
- (lxiii) This paper was presented at the ENGIME Workshop on “Social dynamics and conflicts in multicultural cities”, Milan, March 20-21, 2003
- (lxiv) This paper was presented at the International Conference on "Theoretical Topics in Ecological Economics", organised by the Abdus Salam International Centre for Theoretical Physics - ICTP, the Beijer International Institute of Ecological Economics, and Fondazione Eni Enrico Mattei – FEEM Trieste, February 10-21, 2003

## 2002 SERIES

<b>CLIM</b>	<i>Climate Change Modelling and Policy</i> (Editor: Marzio Galeotti )
<b>VOL</b>	<i>Voluntary and International Agreements</i> (Editor: Carlo Carraro)
<b>SUST</b>	<i>Sustainability Indicators and Environmental Valuation</i> (Editor: Carlo Carraro)
<b>NRM</b>	<i>Natural Resources Management</i> (Editor: Carlo Giupponi)
<b>KNOW</b>	<i>Knowledge, Technology, Human Capital</i> (Editor: Dino Pinelli)
<b>MGMT</b>	<i>Corporate Sustainable Management</i> (Editor: Andrea Marsanich)
<b>PRIV</b>	<i>Privatisation, Regulation, Antitrust</i> (Editor: Bernardo Bortolotti)
<b>ETA</b>	<i>Economic Theory and Applications</i> (Editor: Carlo Carraro)

## 2003 SERIES

<b>CLIM</b>	<i>Climate Change Modelling and Policy</i> (Editor: Marzio Galeotti )
<b>GG</b>	<i>Global Governance</i> (Editor: Carlo Carraro)
<b>SIEV</b>	<i>Sustainability Indicators and Environmental Valuation</i> (Editor: Anna Alberini)
<b>NRM</b>	<i>Natural Resources Management</i> (Editor: Carlo Giupponi)
<b>KNOW</b>	<i>Knowledge, Technology, Human Capital</i> (Editor: Gianmarco Ottaviano)
<b>IEM</b>	<i>International Energy Markets</i> (Editor: Anil Markandya)
<b>CSR</b>	<i>Corporate Social Responsibility and Management</i> (Editor: Sabina Ratti)
<b>PRIV</b>	<i>Privatisation, Regulation, Antitrust</i> (Editor: Bernardo Bortolotti)
<b>ETA</b>	<i>Economic Theory and Applications</i> (Editor: Carlo Carraro)
<b>CTN</b>	<i>Coalition Theory Network</i>