

Programme for the International **IMISCOE/SUS.DIV** Conference 2009

SUSTAINABLE DIVERSITY, MIGRATION AND SOCIAL COHESION



Programme for the International

IMISCOE/SUS.DIV Conference 2009

Sustainable diversity, migration and social cohesion

Stockholm University, Sweden
9–11 September 2009

Stockholm University and CEIFO

Stockholm University

Stockholm University is the region's centre for higher education and research in the humanities, the natural and social sciences and jurisprudence.

With over 50,000 undergraduate and Master's students, 1,800 doctoral students and 5,200 employees, it is one of the largest universities in Sweden and one of the largest employers in the capital. People of many different nationalities, with contacts throughout the world, contribute to the creation of a highly international atmosphere at Stockholm University.

CEIFO

The Centre for Research in International Migration and Ethnic Relations (CEIFO) was established in 1983 as an interdisciplinary research institute within Stockholm University's faculty of social science. The centre cooperates in its research and training projects with other faculty departments as well as with other like-minded research centres, both in Sweden and abroad. Erik Olsson has served as director of CEIFO since 2008. Up until then this position was held by Charles Westin (1994–2008), who was preceded by Thomas Hammar (1983–1993).

CEIFO's research programme recognises the importance of theoretical analysis that has a firm empirical base. Current research focuses on the following issues:

- Transnational migration: processes and boundary-transcending relations
- National policy in relation to migration and ethnicity
- Racism, discrimination and attitudes
- Multiculturalism and diversity management
- Integration and incorporation in mainstream society.

For more information see
www.ceifo.su.se

The conference

‘Sustainable diversity, migration, social cohesion and sustainability’ as the conference is entitled, will address a number of pertinent research questions common to researchers in these fields. As a result of globalisation processes, such issues are gaining increasing importance for future political agendas in modern welfare societies. Invited to participate in the conference are individual researchers from the member institutes of two Networks of Excellence, IMISCOE and SUS.DIV.

The conference will address the research themes of both networks, departing from the following question: how do we envisage the future of Europe with regard to diversity, migration and social cohesion? Specific emphasis will be placed on issues of understanding, communication and identity. Discussions will focus how we experience research on diversity, migration and integration, how we communicate about these themes and how we identify with them as both researchers and members of society.

Administrative meetings among institute directors and network boards will be held in conjunction with the conference to discuss expansion, possible fusion and maintenance of research networks in this field. Participants will endeavour to answer questions such as how should research collaboration be organised independent of European funding, how can present infrastructure and its achievements be maintained and what funding sources are available?

FOR SCHOLARLY ISSUES

Please refer to your cluster or task group leader or to

Professor Charles Westin
Charles.westin@ceifo.su.se
+46-(0)70-740 57 58

or to

Dr. Angela Nilsson
Angela.nilsson@ceifo.su.se
+46-(0)70-558 14 34

FOR PRACTICAL ISSUES

Please refer to

Bodil Lagerås
Bodil.lageras@ceifo.su.se
+46-(0)8-16 26 89

IMISCOE & SUS.DIV Annual Conference

This conference is co-arranged by two Networks of Excellence. Networks of Excellence are instruments designed by the European Commission to strengthen scientific and technological distinction on a particular research topic through the durable integration of research capacities. Together IMISCOE and SUS.DIV hope to create opportunities for researchers to meet and to build lasting bridges.

About IMISCOE

International Migration Integration and Social Cohesion in Europe (IMISCOE)

The Network of Excellence IMISCOE unites 23 established European research institutes and over 500 researchers from across Europe and other countries worldwide. IMISCOE is funded in the Sixth Framework Programme for Research of the European Commission until 1 April 2010, and is currently under transition to become the self-financed IMISCOE Research Network after this date. The network's members specialise in all branches of the economic and social sciences, the humanities and law in pursuit of studies under its mandated themes.

Research

What are the causes and nature of current migration processes? How can migration flows be managed and influenced? How can societies maintain social cohesion and societal viability? How can scientists, policymakers and practitioners in the field exchange knowledge and experience? Answering these kind of questions is what catalysed IMISCOE's establishment and what continues to compel the network's *raison d'être*. IMISCOE's many members are united under one programme that is organised into *nine research clusters*. Scientists within the individual clusters exchange information on their current research making strategic choices to create coherent programmes for their domains. IMISCOE members can also cross-cut their clusters, joining forces in working groups on specific themes. For more information see www.imiscoe.org.

RESEARCH CLUSTERS

- A1 International migration and its regulation
- A2 Migration and development
- B3 Migration and citizenship
- B4 The economic dimension
- B5 Social integration and mobility, education, housing and health
- B6 Linguistic, cultural and religious diversity and related policies
- C7 Interethnic relations, identity, representation and discrimination
- C8 Gender, age and generations
- C9 The multilevel governance of immigrant and immigration policies

About SUS.DIV

Sustainable Development in a Diverse World (SUS.DIV)

SUS.DIV is a five-year project funded by EU that focuses on the relationship between cultural diversity and sustainable development. The project started in 2005 with the aim of integrating European research capacities across disciplines and countries. SUS.DIV seeks to provide society and polity with the instruments for managing cultural diversity as a key element of a new strategy for sustainable development. The network is co-ordinated by the Fondazione Eni Enrico Mattei under the scientific lead of Katholieke Universiteit Leuven. The partnership is composed of 35 institutes across Europe and beyond.

Research

Research is organised into nine multi-national, multi-disciplinary *research tasks*.

Four main research topics underpin the tasks:

- Understanding diversity and its importance for human welfare
- Global vs. local: the dynamics of diversity in the globalisation era
- Diversity, knowledge productivity and creativity
- Cultural dialogue: unfolding diversity.

Gender issues are also investigated as a main feature of cultural diversity. For more information see www.susdiv.org.

RESEARCH TASKS

Cultural diversity: Mapping dynamic processes

Cultural diversity as an asset for human welfare and development

Cultural distance, organisation and governance in a global context

Diversity and the creative capacity of cities and regions

Diversity and the creative capacity of organisations and teams

Cultural dialogue through governance: diversity in the political arena

Cultural dialogue through art: diversity in the cultural arena

Cultural dialogue through (im)possible spaces: diversity in the social arena

Diversity and ethnic entrepreneurship: Dialogue through exchanges in the economic arena

Conference programme

All locations are on Stockholm University's campus

Tuesday 8 September	14.00–18.00	Editorial Committee meeting, IMISCOE (closed meeting) Room: CEIFO seminar room, house B, level 6, room B 658
Wednesday 9 September	09.00–12.00	Editorial Committee, IMISCOE (closed meeting) Room: CEIFO seminar room, house B, level 6, room B 658
	13.00–17.30	Board of Directors, IMISCOE (closed meeting) Room: Bergsmannen, Aula Magna
	15.00–17.00	Executive Committee SUSDIV (closed meeting) Room: Social Anthropology seminar room, house B, level 6, room B 600
	15.00–18.00	TIES (closed meeting – by invitation only) Room: Kungsstenen, Aula Magna
	17.00–18.30	Annual meeting for SUS.DIV partners (closed meeting) Room: house E, level 3, room E 306
	17.30–18.30	Financial Committee, IMISCOE (closed meeting) Room: Bergsmannen, Aula Magna
	18.30–19.30	Registration open, Aula Magna
	18.30–21.00	Welcome reception, Aula Magna We will start with a wine buffet hosted by the <i>Journal of Ethnic and Migration Studies</i> and <i>Amsterdam University Press</i> . It will be followed by a dinner buffet hosted by CEIFO.

Thursday 10 September

Room: Hörsalen, Aula Magna

- 08.30–09.15** Registration and coffee at level 4, Aula Magna
- 09.15–10.45** Plenary session moderated by *Prof. Annika Rabo*, CEIFO, Stockholm University
- 09.15–09.20** Welcome speech by *Kåre Bremer*, Vice-Chancellor of the University
- 09.20–09.30** Presentation of SUS.DIV network by *Prof. Maddy Janssens*, SUS.DIV Scientific Leader
- 09.30–09.40** Presentation of IMISCOE Network by *Prof. Rinus Penninx*, IMISCOE Coordinator
- 09.40–09.45** *Giulia Amaducci*, Research Officer, European Commission
- 09.45–10.45** Panel on discrimination research moderated by *Prof. Charles Westin* (CEIFO, Stockholm University). Panelists: *Prof. Floya Anthias* (Roehampton University), *Dr. Patrick Simon* (INED) and *Prof. Stefan Jonsson* (Linköping University)

Discrimination of migrants and of ethnic/religious minorities is the most serious obstacle to integration and social cohesion in the European Union. The panelists will each give a brief introduction to their perspective on discrimination. In the following discussion they will be asked to reflect on specific questions.

- 10.45–11.15** Coffee

Thursday 10 September

Room: Hörsalen, Aula Magna

11.15–12.15

Keynote speaker: *Prof. Nina Glick Schiller*, (University of Manchester, UK). *Transnational migration and methodological nationalism*

Nina Glick Schiller's keynote lecture will develop her views on the shortcomings of traditional migration research. One of its most obvious flaws is that much of this research is still based on simplistic push/pull models of mobility, and that much of the research in Western countries is dominated by the perspective of the receiving country.

Nina Glick Schiller has played an important role in promoting understanding of migration processes in terms of transnational connections and linkages. Together with Andreas Wimmer she also introduced a debate focussing on the concept of methodological nationalism. In brief, it addresses how the nation state's need for information about migration flows – ultimately to control these flows – affects the very instruments and the data of migration research.

12.15–13.30

Lunch – Galleriet, Aula Magna

13.30–14.30

Parallel sessions for each network

IMISCOE Research cluster meetings – SUS.DIV joint meeting
For more information see pages 10–11

14.30–15.00

Coffee – Poster presentations

15.00–17.00

Parallel sessions for each network (*cont.*)

For more information see pages 10–11

17.10

Bus to Stockholm City Hall from Universitetsvägen 10 at Stockholm University

18.00–20.00

Reception at Stockholm City Hall

Short welcome speech, buffet and a guided tour of City Hall

Friday 11 September

Room: Hörsalen, Aula Magna

09.00–10.00

Plenary session moderated by *Prof. Charles Westin*

09.00–10.00

Keynote speaker: *Dr. Claudio Lange*, (Free University Berlin)
Representations of the Other

Claudio Lange's keynote lecture is about collective millennia-old representations of "the Muslim", one aspect of which Edward Saïd treats in his work on Orientalism. While historians, political scientists and anthropologists agree that these very old collective representations of Muslims have profound significance for European self-conceptions and influence European attitudes towards Muslim migrants, we do not know so much about the nature of the representations or how they were presented to the populace. In his lecture Claudio Lange seeks answers at the very centre of power 500 years ago, in the mediaeval cathedrals. In the eleventh century he says, Western Europe underwent a media revolution, whose significance for a major crisis of the cultural and political identity of mediaeval and modern Europe cannot be over-estimated. The military victory of Christian rulers over Islamic societies on the Iberian Peninsula was accompanied by a campaign of anti-Islamic propaganda staged in Christian churches and their outdoor sculptures, where Muslims are depicted as unrefined, materialistic, primitive and sexually perverse. These works of mediaeval art are still there, and are seen by millions of visitors to churches and cathedrals every year but without realising their significance. The importance of Claudio Lange's lecture is that he just doesn't talk about representation, stereotypes and Orientalism on a purely theoretical level. To support his position, he has an abundance of empirical data, not previously analysed or presented.

10.00–10.30

Coffee – Poster presentations

10.30–12.00

Cross-networking in workshops

For more information see pages 12–13

12.00–13.30

Lunch – Galleriet, Aula Magna

13.30–16.00

Cross-networking in workshops

For more information see pages 12–13. (14.30–15.00 Coffee break)

Cluster & task group meetings

<i>Cluster/task group</i>	<i>Room</i>
IMISCOE	
A1: International migration and its regulation	B 487, house B, level 4
A2: Migration and development: causes and consequences	Kungsstenen, Aula Magna
B3: Migration and citizenship: legal status, mobilization and political participation	B 413, house B, level 4
B4: The economic dimension: work, entrepreneurship, economic integration	Polstjärnan, Aula Magna
B5: Social integration and mobility, education, housing and health	Bergsmannen, Aula Magna
B6: Linguistic, cultural and religious diversity and related policies	B 419, house B, level 4
C7: Interethnic relations, identity, representation and discrimination	Mimer, Aula Magna
C8: Gender, age and generations	Spelbomskan, Aula Magna
C9: The multilevel governance of immigrant and immigration policies	B 307, house B, level 3

<i>Cluster/task group</i>	<i>Room</i>
SUS.DIV	
Executive Committee 13.30–14.30	Social Anthropology seminar room, B 600, house B, level 6
General assembly 15.00–17.00	Hörsalen, Aula Magna

Cross-networking in workshops

<i>Workshop</i>	<i>Room</i>
Session One 10.30–12.00	
1. Researching ‘super-diversity’ in European cities: conceptual and methodological challenges Org: <i>Susanne Wessendorf</i> (Max Planck Institute for the Study of Religious and Ethnic Diversity)	Hörsalen, Aula Magna
3. Cultural diversity and law Org: <i>Ralph Grillo</i> (SCMR) and <i>Marcel Maussen</i> (IMES)	Kungsstenen, Aula Magna
4. Love Across Boundaries: Marriage migration as intersection site between tradition, gendered aspirations and globalised policies Org: <i>Christiane Timmerman</i> , (CeMIS) and <i>Yvonne Riano</i> (University of Bern)	Spelbomskan, Aula Magna
5. PROMINSTAT Org: <i>Albert Kraler</i> (ICMPD) and <i>Stefanie Reiter</i> (efms)	Mimer, Aula Magna
6. Highly-skilled migration from India Org: <i>Aurelie Varrel</i> (MIGRINTER)	Polstjärnan, Aula Magna
7. Closed workshop. WP 83: Welfare state Org: <i>Floris Vermeulen</i> (IMES)	B 419, house B, level 4

<i>Workshop</i>	<i>Room</i>
Session two 13.30–16.00 (Coffee 14.30–15.00)	
1. Critical approaches to identity in diversity research Invited speaker: <i>Prof Mats Alvesson</i> . Org: <i>Maddy Janssens</i> (K.U. Leuven), <i>et al.</i>	Bergsmannen, Aula Magna
2. Knowledge and the division of labor, migration, skills and multicultural cities Org: <i>Cristina Cattaneo</i> (FEEM)	B 487, house B, level 4
3. Migration and entrepreneurship Speakers: <i>Prof Lena Tsipouri</i> , <i>Dr. Holger Kolb</i> . Org: <i>Lena Tsipouri</i> and <i>Tonia Damvakeraki</i> (National and Kapodistrian University of Athens)	Kungsstenen, Aula Magna
4. Transnationalism and the challenges of methodological nationalism Invited speakers: <i>Prof Floya Anthias</i> and <i>Prof em Ulf Hannerz</i> Org: <i>Erik Olsson</i> (CEIFO)	Spelbomskan, Aula Magna
5. Social Identity and social capital Org: <i>Patrizia Rigganti</i> (University of Nottingham), <i>Paulo Nuñez</i> (FEEM), <i>Laura Onofri</i> (FEEM), <i>Kathleen Heugh</i> (University of South Australia), <i>Rajesh Sachdeva</i> (Central Institute of Indian Languages)	B 419, house B, level 4
6. New forms of livelihood? Org: <i>Sandra Wallman</i> and <i>Susanne Kuchler</i> (UCL)	B 413, house B, level 4
7. Discrimination and trust in labour market encounters Org: <i>Sonia Pereira</i> (CEG), <i>Nahikari Irastorza</i> (DEUSTO) and <i>Joana Sousa Ribeiro</i> (CES)	Polstjärnan, Aula Magna
8. Gender age generations: exploring intersectionality Org: <i>Stéphanie Condon</i> (INED) and <i>Russel King</i> (SCMR)	Mimer, Aula Magna
9. Migration control and exclusion: need migration policies be fair? Org: <i>Albert Kraler</i> (ICMDP) and <i>Rainer Bauböck</i> (EUI)	B 315, house B, level 3

Presentations of Keynote speakers



Nina Glick Schiller

Since 2007, Nina Glick Schiller has served as Director and Chair at the Research Institute for Cosmopolitan Cultures and Professor of Social Anthropology at the University of Manchester in the UK. She received her PhD in anthropology from Columbia University in 1975. Her main research and expertise is international migration, transnational processes, urban studies and medical anthropology. Among her various publications some of the most well-known are the co-authored book *Georges Woke Up Laughing: Long Distance Nationalism and the Search for Home* (Duke University Press 2003) and the co-authored articles 'Methodological Nationalism and Beyond. Nation-State Building, Migration and the Social Sciences' (*Global Networks* 2 (4) 2002) and 'Methodological Nationalism and the Study of Migration' (*European Journal of Sociology* 43 (2) 2002).



Claudio Lange

Claudio Lange was born in Santiago, Chile in 1944. He studied in Chile and Germany and he received his PhD in religious studies from the Free University of Berlin in 1972. After returning to Chile the coup d'état against the Allende government forced him to flee in 1973. Since 1975 he has worked as an artist in Berlin where he resides and in Andalusia. He also gives lectures about his academic work on European church art.

Panelists

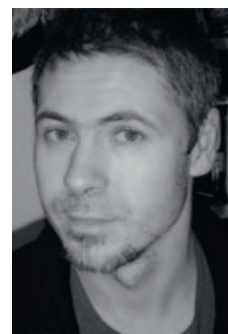
Floya Anthias

Floya Anthias is currently Professor of Sociology and Social Justice at Roehampton University, London. She received her PhD from the University of London's Bedford College in 1981. Her primary research interests are in the areas of transnational migration and social divisions and identities. This has also entailed a concern with social exclusion and inequality as well as ethnicity, gender and multiculturalism. Her recent publications include the co-edited books *Into the Margins: Migration and Exclusion in Southern Europe*, (Ashgate 1999), *Gender and Migration in Southern Europe: Women on the Move* (Berg 2000) and *Rethinking Antiracisms: From Theory to Practice* (Routledge 2002).



Patrick Simon

Patrick Simon is Lecturer in Urban Sociology at the Institut national d'études démographiques (INED) in Paris. His research interests are immigration, ethnic and racial studies, social and ethnic division of space, housing conditions and statistical classification. Among his publications is a methodological study of comparing the impact of discrimination in Canada, the US, Australia, the UK and the Netherlands.



Stefan Jonsson

Stefan Jonsson is visiting Associate Professor at the Institute for Research in Ethnicity, Migration, and Society (REMESO) at Linköping University and a senior literary critic at Sweden's leading newspaper Dagens Nyheter. Among his books are *Subject Without Nation: Robert Musil and the History of Modern Identity* (Duke University Press 2000) and *A Brief History of the Masses: Three Revolutions* (Columbia University Press 2008).



Welcome receptions



Aula Magna, Stockholm University.

1. Reception at Stockholm University

Wednesday, 9 September 18.30–21.00

2. Reception at Stockholm City Hall

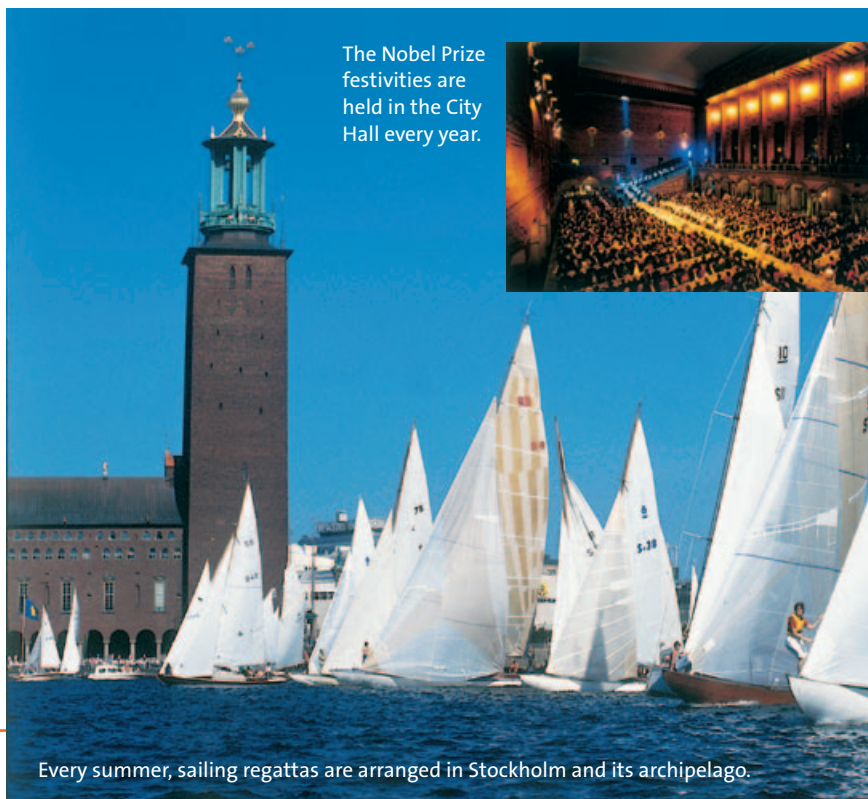
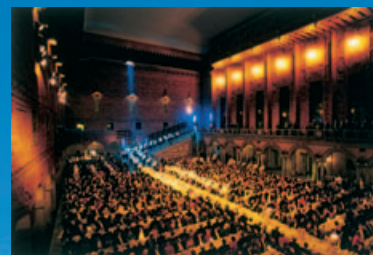
Thursday 10 September 18.00–20.00

The City Hall, which serves as a principal symbol of the capital of Sweden, is the seat of the city government. Some 200 politicians and civil servants have their offices in and around this building.

The City Hall is known for its hospitality. Art treasures, magnificent banquets and an intriguing history attract close to 400,000 visitors a year. These historically unique and beautifully appointed banquet halls are a magnificent venue for all kinds of events, the most celebrated of which is the annual Nobel Banquet held on 10 December.

This reception will be hosted by one of the members of the City Council and last around two hours.

The Nobel Prize festivities are held in the City Hall every year.



Every summer, sailing regattas are arranged in Stockholm and its archipelago.

Getting to Stockholm University's campus

Airports

Arlanda Airport, the main international airport, is situated 40 kilometres north of the city centre. A regular coach service, run by the bus company Flygbussarna, takes you from Arlanda Airport to Stockholm's central station. The journey takes about 40 minutes. The price of a single one-way ticket is SEK 110, a round-trip ticket costs SEK 199. More information is available at: www.flygbussarna.se.

www.flygbussarna.sewww.arlandaexpress.sewww.brommaairport.se

A faster but costlier train service is the **Arlanda Express**, which runs between Arlanda and the central station in Stockholm. The price of a single one-way ticket is SEK 240. More information is available at: www.arlandaexpress.com.

Journey by taxi from Arlanda to Stockholm usually costs about SEK 500-600.

Skavsta Airport is situated 1 hour and 20 minutes south of Stockholm. Ryanair brings you to this airport. There is a regular coach service between Skavsta and Stockholm's central station. The cost of a single one-way ticket is SEK 110, a round-trip ticket costs SEK 199. Airport bus company Flygbussarna also runs a regular service. More information is available at: www.flygbussarna.se.

Västerås Airport lies 1 hour and 15 minutes north-west of Stockholm. There are buses from Västerås airport, though they run infrequently. Ticket prices are the same as from Skavsta. More information is available at: www.flygbussarna.se.

Bromma Airport is a smaller airport located close to the city centre with flights to a limited number of domestic destinations. More information is available at: www.brommaairport.se.

www.sl.se

Public transport

Tickets for public transport can be bought from newsagents as well as from Stockholms Lokaltrafik (SL) ticket offices. See SL's travel page for more information: www.sl.se.

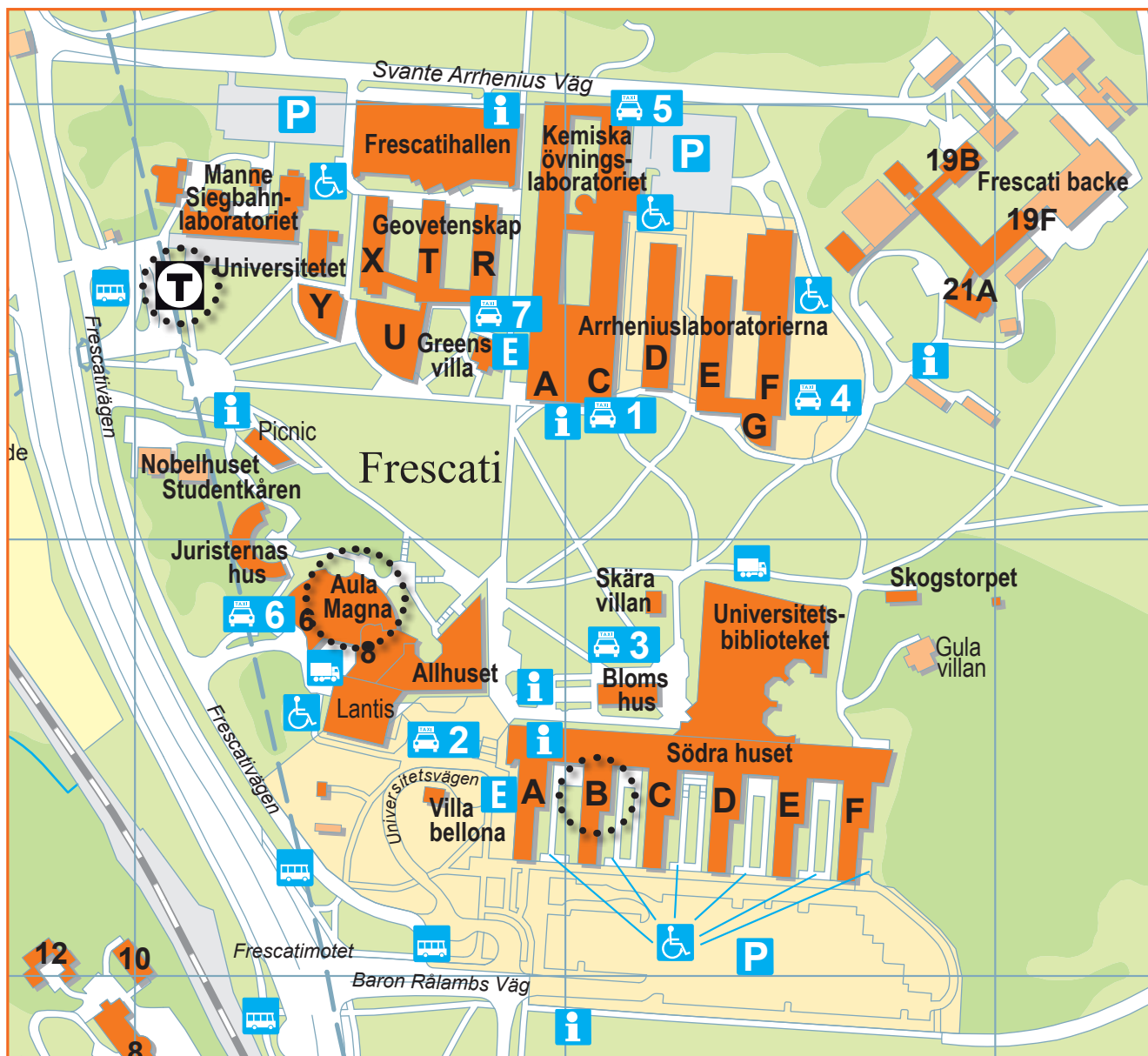
Underground trains: You can travel by the metro from Stockholm's central station (T-centralen). Take the red line northbound to Mörby Centrum and get off at the station Universitetet. The journey takes about 10 minutes.

You can also use the special built-in SL search at: www.sl.se.

Bus: Take bus numbers 40, 70, 540 or 670 to Stockholm University. Get off at stop Universitetet Norra for the main campus. Tickets must be bought in advance.

Location

The conference is being held at the University of Stockholm's main Frescati campus, in northern Stockholm. Registration and the main venue are located in Aula Magna. The seminars will take place in Aula Magna and the B wing of the Södra huset (Southern House) on the map; five minutes from the underground station.



Practical information

Conference registration

Registration starts on Wednesday 9 September at 18.30 in the Aula Magna. The reception desk in Aula Magna is open for inquiries throughout the duration of the conference.

Because your name badge serves as an ID, please wear it at all times during the conference.

Computer services and internet access

During the conference, computer, print and copy services are available through the reception desk.


If you need internet access during the conference we recommend you bring your own laptop. Stockholm University offers wireless internet access. Wireless log-in information can be obtained through the reception desk.

Presentation technology

Most seminars rooms are equipped with a computer (PC) and facilities for PowerPoint (PPT) presentations. As such, saving your presentation file on a USB memory stick should suffice.

If, however, you wish to use your own Mac for your presentation, please note that you must bring a VGA adapter to connect your laptop to the projectors in the seminar rooms.

Swedish appliances use the standard two-pin rounded plug used in most of Continental Europe. Please note that if you come from countries with another type of plug (e.g. the US and the UK), you have to bring your own adapter in order to use your laptop or any other electrical equipment.



The 2009 annual IMISCOE and SUS.DIV conference is dedicated to the memory of Professor **Maria Baganha**, University of Coimbra, Portugal. Her leadership and pioneering work in migration research has been of utmost importance to the IMISCOE network.



**The Centre for Research in International
Migration and Ethnic Relations, CEIFO**

Stockholm University, SE-106 91 Stockholm, Sweden

Tel: +46 8 16 20 00 E-mail: ceifo.editor@ceifo.su.se www.ceifo.su.se



**Stockholm
University**